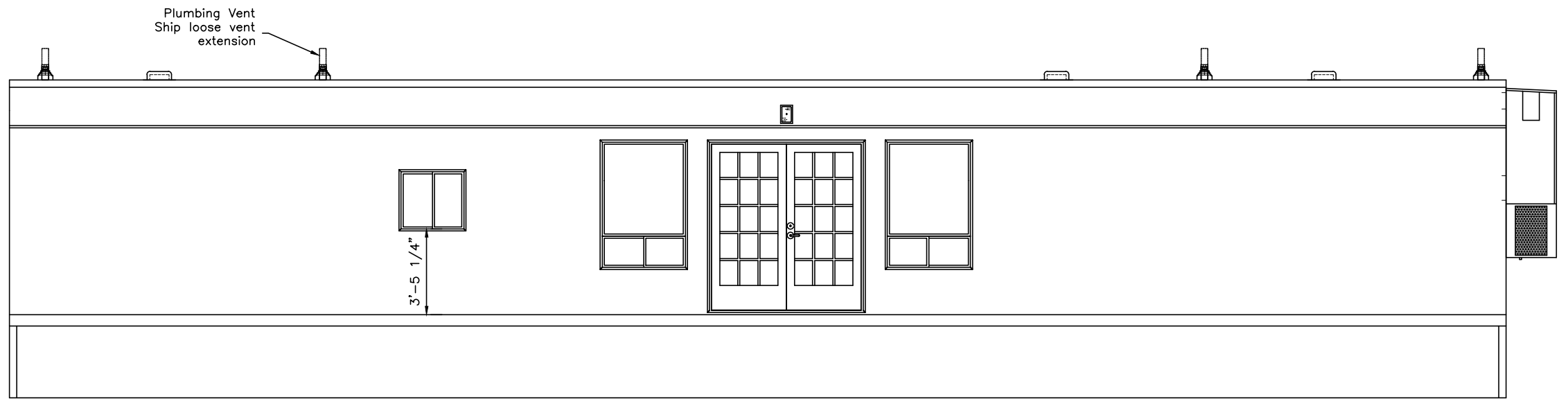
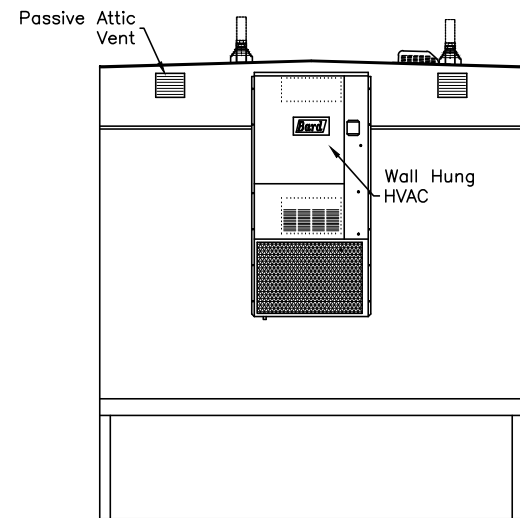


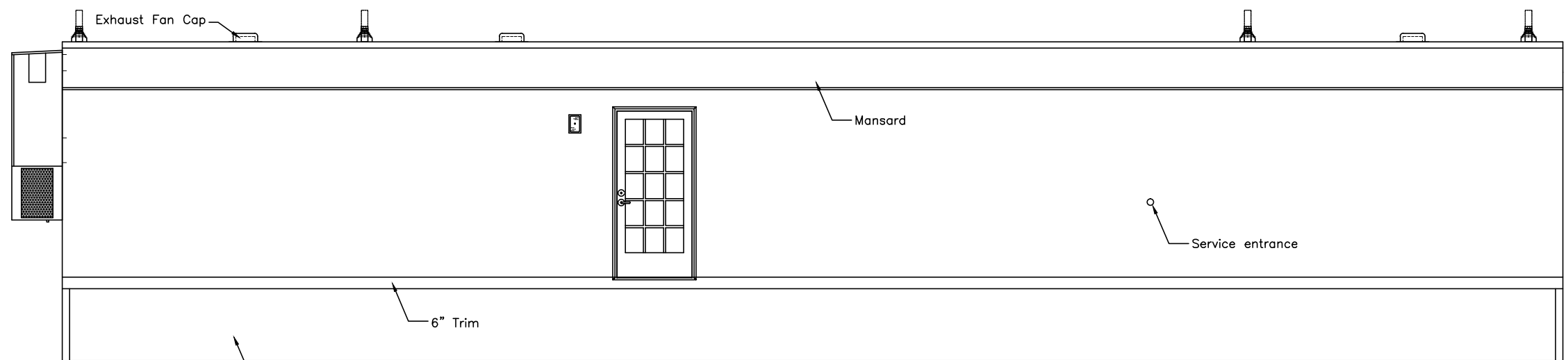
**Elevation "D"**



**Elevation "C"**



**Elevation "B"**



**Elevation "A"**

ID	Revision	Date

Scale: Noted	Drawn: Doug	Date: 09/22/2011	Plot Date: Oct 24, 2011
Serial Numbers: 11-17269	Drawing Number: 1485	DWG File Name: 11-17269.dwg	
Approval Numbers: QPS - Electric	Sales Representative: Lewis Chadwick		
Title: Armstrong Trailer 12 x 64 Lunch Room (11'-9" x 60'-0")			
Sheet Description: Building Elevations			Page #: A1

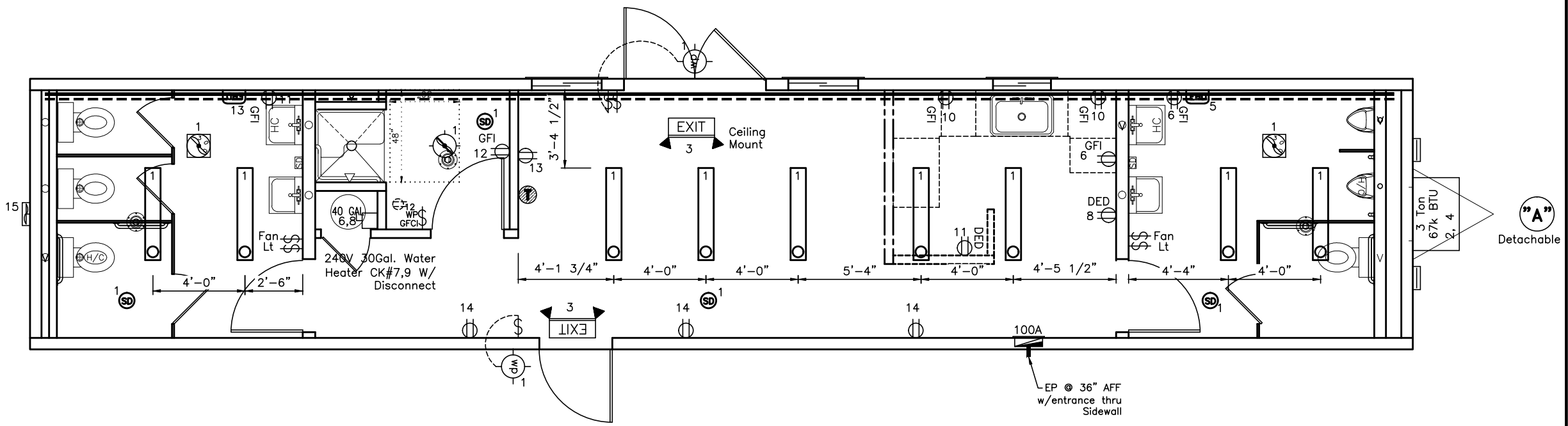
2224 Bloomingdale Drive  
 Bristol, Indiana 46507  
 PH: (574) 848-7300  
 FX: (574) 848-1950  
**C & B**  
 MODULAR, INC.





### Wire Size Chart

Breaker Size	Wire Size	Breaker Size	Wire Size
15A	#14	80A	#4
20A	#12	90A	#3
30A	#10	100A	#3
40A	#8	115A	#2
50A	#8	130A	#1
60A	#6	150A	1/0



**Electrical Riser Diagram**  
NTS

### DRAWING LEGEND

SYMBOL	QTY.	DESCRIPTION
	1	120/240 electric panel (+36" AFF to bottom of panel)
	2	300 CFM exhaust fan
	1	100 CFM exhaust fan/lt combo w/13W flourescent bulb
	1	Low voltage thermostat (+48" AFF to top)
	1	Power gable vent
	1	120V GFCI recept for heattape (below floor)
	4	120V ivory duplex grounding type (+18" AFF unless noted)
	2	120V ivory duplex grounding type (Dedicated) (+18" AFF unless noted)
	6	120V ivory duplex GFCI protected (+42" AFF unless noted)
	8	120V ivory toggle type (+42" AFF unless noted)
	9	120V 4' (2) tube surface mount w/diffuser
	2	120v exterior weatherproof porch light
	4	smoke detector 120v wire in series w/ batt back up
	2	Emergency Flood/exit light combo (+88" AFF unless noted) (1) ceiling mount

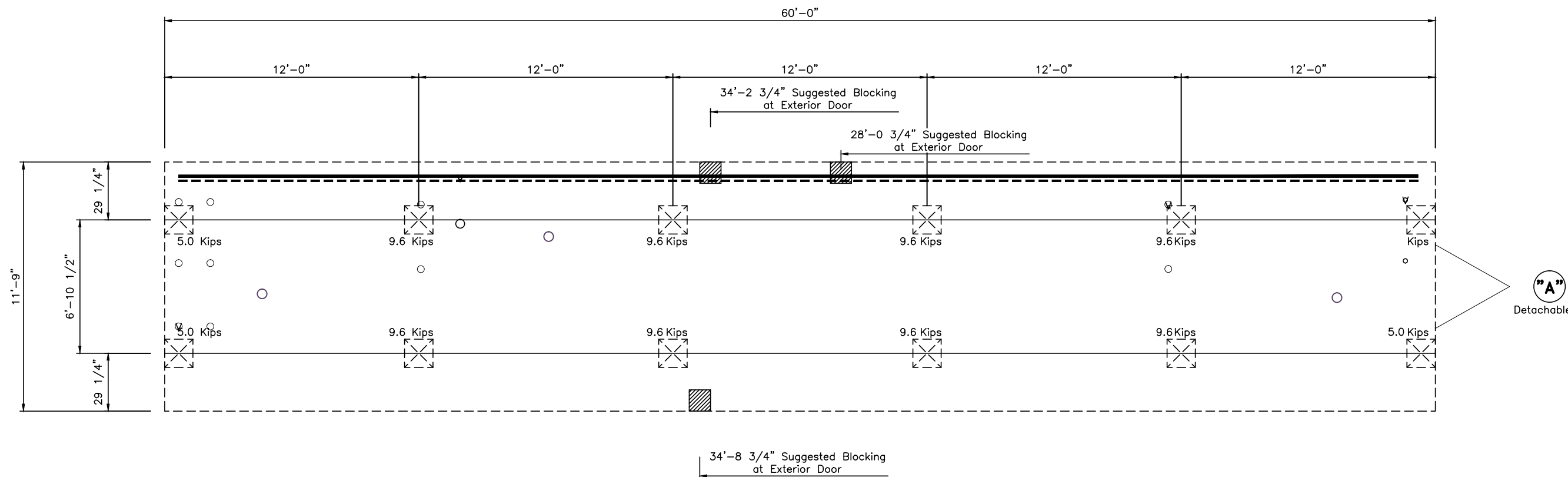
Module: A      Area served 705 ft      Panel Voltage 240  
Main Breaker 100A      Panel Phase 1

CKT#	Breaker size	Description	QTY	Voltage	Wattage per item	Connected Load	Load Factor	Calculated load	Total
1	20 /1	Lights (2-tube)	9	120	71.2	640.8	1.25	801	
		Exhaust fan	2	120	90	180	1.25	225	
		Lighted Exhaust fan	1	120	130	130	1.25	162.5	1188.5
2,4	40 /2	3-ton, Bard	1	240	6240	6240	1.00	6240	6240
3	20 /1	Emer. Exit/Flood combo	2	120	5	10	1.25	12.5	12.5
5	20 /1	Hand Dryer	1	120	1500	1500	1.00	1500	1500
8	20 /1	GFCI Recepts	2	120	180	360	1.00	360	360
7,9	30 /2	water heater	1	240	4500	4500	1.25	5625	5625
8	20 1	Ded Recept	1	120	500	500	1.00	500	500
10	15 1	GFCI Recepts	2	120	180	360	1.00	360	
11	20 1	Ded Recept	1	120	500	500	1.00	500	500
12	20 /1	GFCI Recepts	2	120	180	360	1.00	360	
		Heattape	1	120	450	450	1.25	562.5	922.5
13	20 /1	Hand Dryer	1	120	1500	1500	1.00	1500	1500
14	15 1	Recepts	3	120	180	540	1.00	540	540
15	20 /1	Gable Vent	1	120	130	130	1.00	130	130
Total connected load								19018.50	
Actual light load								963.50	
TCL - ACL								18055.00	
NEC LT load factor								3.5	3084.38
Total Load								21139.38	
Panel load amps								88.08	

2224 Bloomingdale Drive  
Bristol, Indiana 46507  
PH: (574) 848-7300  
FX: (574) 848-1950

ID	Revision	Date		
Scale:	3/16 = 1'-0"	Drawn: Doug	Date: 09/22/2011	Plot Date: Oct 24, 2011
Serial Numbers:	11-17269	Drawing Number: 1485	DWG File Name: 11-17269.dwg	
Approval Numbers:	QPS - Electric	Sales Representative: Lewis Chadwick		
Title:	Armstrong Trailer 12 x 64 Lunch Room (11'-9" x 60'-0")			
Sheet Description:	Production Electrical Plan			Page #: E1

C  
U  
S  
T  
O  
M  
O  
M  
O  
D  
U  
L  
A  
R  
I  
N  
C.



DRAWING LEGEND		
SYMBOL	QTY.	DESCRIPTION
	12	Blocking up to main I-beam
	3	Blocking up to floor framing

SITE WORK

### FOUNDATION NOTES

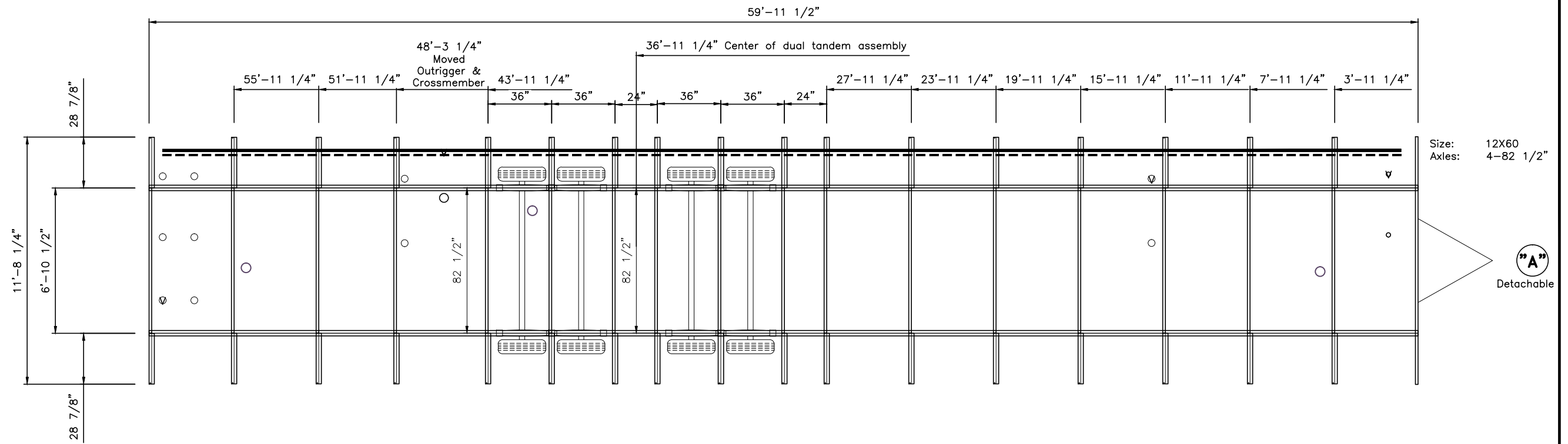
- This is a suggested plan only. Foundation to be designed by a professional engineer or registered architect per local soil and climate conditions in accordance with all applicable local and state codes.
- C&B Custom Modular Inc. assumes no responsibility for actual foundation design and/or construction.
- Numbers adjacent to piers are vertical loads in KIPS.

ID	Revision	Date

Scale: 3/16 = 1'-0"	Drawn: Doug	Date: 09/22/2011	Plot Date: Oct 24, 2011
Serial Numbers: 11-17269	Drawing Number: 1485	DWG File Name: 11-17269.dwg	
Approval Numbers: QPS - Electric	Sales Representative: Lewis Chadwick		
Title: Armstrong Trailer 12 x 64 Lunch Room (11'-9" x 60'-0")			
Sheet Description: Suggested Blocking Points	Page #: S1		

C  
U  
S  
T  
O  
M  
O  
M  
O  
D  
U  
L  
A  
R  
I  
N  
C.  
  
 2224 Bloomingdale Drive  
 Bristol, Indiana 46507  
 PH: (574) 848-7300  
 FX: (574) 848-1950





DRAWING LEGEND		
SYMBOL	QTY.	DESCRIPTION

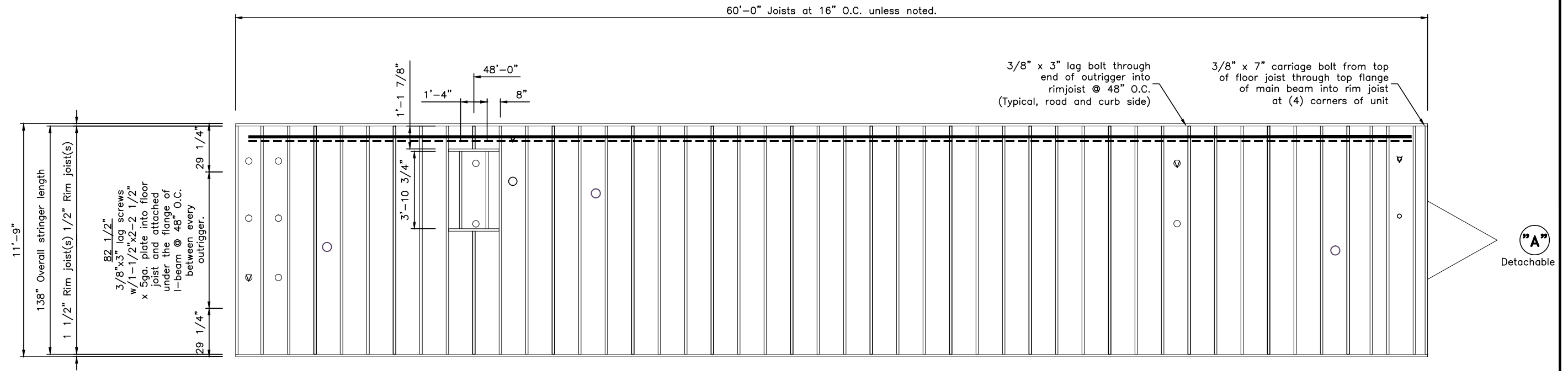
ID	Revision	Date

Scale: 3/16 = 1'-0"	Drawn: Doug	Date: 09/22/2011	Plot Date: Oct 24, 2011
Serial Numbers: 11-17269	Drawing Number: 1485	DWG File Name: 11-17269.dwg	
Approval Numbers: QPS - Electric	Sales Representative: Lewis Chadwick		
Title: Armstrong Trailer 12 x 64 Lunch Room (11'-9" x 60'-0")			
Sheet Description: Production Steel Frame Plan	Page #: S3		

2224 Bloomingdale Drive  
 Bristol, Indiana 46507  
 PH: (574) 848-7300  
 FX: (574) 848-1950

C  
 U  
 S  
 T  
 O  
 M  
 O  
 D  
 U  
 L  
 A  
 R  
 ,  
 I  
 N  
 C  
 .





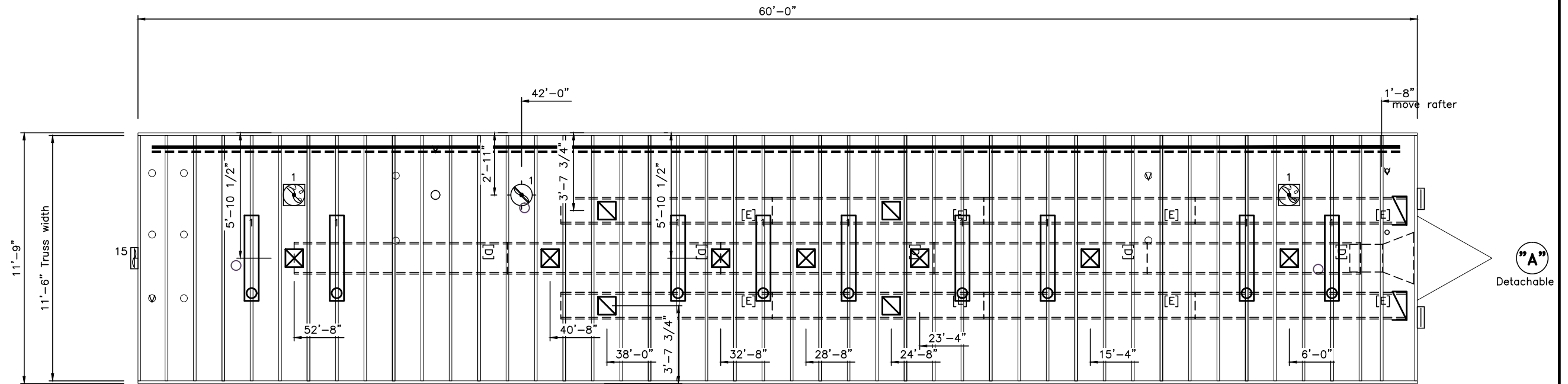
**DRAWING LEGEND**

SYMBOL	QTY.	DESCRIPTION

ID	Revision	Date

Scale: 3/16 = 1'-0"	Drawn: Doug	Date: 09/22/2011	Plot Date: Oct 24, 2011
Serial Numbers: 11-17269	Drawing Number: 1485	DWG File Name: 11-17269.dwg	
Approval Numbers: QPS - Electric	Sales Representative: Lewis Chadwick		
Title: Armstrong Trailer 12 x 64 Lunch Room (11'-9" x 60'-0")			
Sheet Description: Production Floor Framing Plan			Page #: S4

C  
U  
S  
T  
O  
M  
E  
R  
S  
O  
F  
M  
O  
D  
U  
L  
A  
R  
I  
N  
C.  
 2224 Bloomingdale Drive  
 Bristol, Indiana 46507  
 PH: (574) 848-7300  
 FX: (574) 848-1950



DRAWING LEGEND		
SYMBOL	QTY.	DESCRIPTION



Duct Legend	
ID	Description
D	16w X 6h X 120L
E	14w X 4h X 120L (or cut to fit)
All duct dimensions are INSIDE dims.	

ID	Revision	Date

Scale: 3/16 = 1'-0"	Drawn: Doug	Date: 09/22/2011	Plot Date: Oct 24, 2011
Serial Numbers: 11-17269	Drawing Number: 1485	DWG File Name: 11-17269.dwg	
Approval Numbers: QPS - Electric		Sales Representative: Lewis Chadwick	
Title: Armstrong Trailer 12 x 64 Lunch Room (11'-9" x 60'-0")			
Sheet Description: Production Roof Framing Plan			Page #: S5

2224 Bloomingdale Drive  
 Bristol, Indiana 46507  
 PH: (574) 848-7300  
 FX: (574) 848-1950

C  
 U  
 S  
 T  
 O  
 M  
 O  
 D  
 U  
 L  
 A  
 R  
 ,  
 I  
 N  
 C  
 .

