

Design Criteria
 SQUARE FOOTAGE: 195 SF
 OCCUPANCY LOAD: 2
 FLOOR DEAD LOAD: 19 PSF
 FLOOR LIVE LOAD: 50 PSF
 ROOF DEAD LOAD: 6 PSF
 SNOW LOAD: 40 PSF
 WIND SPEED: 90 MPH
 BUILDING WEIGHT: 5,300 LBS.

APPROVED FOR PRODUCTION

Armstrong Trailers
 10 x 24 Office
 9'-9" x 20'-0" Actual Size

FRAME – OUTRIGGER

MAIN I-BEAM: M8X6.5 I-BEAM (ASTM A36)
 CROSSMEMBER: ANGLE & ROD AND 13GA FORMED STEEL OUTRIGGER @ 48" O.C.
 NOTE: SOLID REAR CROSSMEMBERS AND RECESSED TAIL LIGHTS
 HITCH: WELDED W/2 5/16" CUP AND JACK
 MISC: W/BARGMAN PLUG
 AXLES: SINGLE 6-MULTI-LEAF SPRINGS OVERSLUNG
 NOTE: 75 1/2" SPRING CENTERS
 TIRES: 14-PLY
 PAINT: MIN 3 MIL BLACK ASPHALT
 MISC: 1 SINGLE RV TYPE STEP
 TIE DOWNS: FRAME TIES, IF REQUIRED, ON SITE BY OTHERS

FLOOR – TRANSVERSE

BOTTOM BOARD: WOVEN PLASTIC INSULATION SUPPORT
 NOTE: FASTENED TO BOTTOM OF JOISTS 24" O.C. MAX
 INSULATION: R-11 UNFACED FIBERGLASS
 JOISTS: 2X6 #2 SPF EQUAL OR BETTER @ 16" O.C. (TRANSVERSE)
 RIM JOIST: 2X6 #2 SPF EQUAL OR BETTER
 DECKING: 5/8"(19/32") T&G DOUGLAS FIR PLYWOOD 16" O.C. MIN. SPAN INDEX
 COVERING: 1/8" VINYL COMPOSITION TILE (CLASS A/1 F.S.) (COLOR = #51839 FORTRESS WHITE)

EXTERIOR WALLS

STUDS: 2X4 STUD GRADE SPF EQUAL OR BETTER @ 16" O.C.
 BOTTOM PLATE: SINGLE 2X4 #3 SPF EQUAL OR BETTER
 TOP PLATE(S): SINGLE 2X4 #3 SPF EQUAL OR BETTER
 WALL HEIGHT: 7'-0"
 WALL COVERING: 1/4" NATURAL BIRCH PANELING (CLASS C/3 F.S.)
 WALL COVERING: 1/4" VINYL COVERED PANELING (CLASS C/3 F.S.) (END WALLS) (COLOR = HAMPTON GRAY)
 INSULATION: R-11 UNFACED FIBERGLASS BATTS
 SHEATHING: 3/8" OSB FULL PERIMETER
 SIDING: .019 ALUMINUM (COLOR = COLONIAL WHITE-SMOOTH)
 NOTES: SCREW EVERY MESA
 TRIM: .019 ALUMINUM (CORNERS, TOP AND BOTTOM) (COLOR = EARTH BROWN -RCE)
 MISC: ANSI CONSTRUCTION

INTERIOR TRIM

TRIM: STANDARD WOOD PROFILES
 TRIM: VINYL BATTENS AT TOP, VERTICAL SEAMS, INSIDE AND OUTSIDE CORNERS
 TRIM: 4" VINYL COVE BASE (COLOR = #P100 BLACK)

ROOF

RAFTERS: BOW TRUSSES @ 16" O.C. W/40# LIVE LOAD
 5 1/2" HEEL X 12 1/4" CROWN 9' - 6" LONG TRUSS#CS-100
 CEILING PANEL: 1/2" PREFINISHED GYPSUM W/VAPOR BARRIER (CLASS A/1 F.S.)
 INSULATION: R-11 UNFACED FIBERGLASS
 SHEATHING: 3/8" OSB
 ROOFING: 30 GA GALVANIZED (CLASS C/3 F.S.)
 GUTTERS: K-60 J-RAIL

EXTERIOR DOOR

A: 1 36X80 VINYL CLAD DOOR W/ALUM. FRAME, 10X10 SAFETY GLAZED LITE, LOCKWARE #5401 KNOB LOCK SET, DRIP CAP, WEATHER STRIPPING, STAY-CHAIN AND THRESHOLD. (COLOR = COLONIAL WHITE)

WINDOWS

2: 3 30X27 HORIZONTAL SLIDER W/SINGLE CLEAR GLASS, ALUM. EXTRUDED MILL FRAME, SELF STORING STORMS (WHITE) AND BUG SCREEN
 1: 2 46X27 HORIZONTAL SLIDER W/SINGLE CLEAR GLASS, ALUM. EXTRUDED MILL FRAME, SELF STORING STORMS (WHITE) AND BUG SCREEN

ELECTRICAL-CSA

SERVICE: 120/240V SINGLE PHASE, 3 WIRE, 60HZ W/GROUND
 LOAD CENTER: 1 24 CIRCUIT WITH MAIN 100AMP BREAKER #CQ0124M125C100
 NOTE: CSA HEIGHT TO BE 36" TO BOTTOM.
 ENTRANCE: 1 1/2" EMT CONDUIT STUB THRU SIDEWALL
 RACEWAY: Min. #14 AWG NM D90 XLPE (CSA)
 LIGHTS: 2 4' 2 T8-TUBE FLUORESCENT W/DIFFUSER & ELECT. BALLAST W/LUM. DISCT. #SB 232 120 RE.
 NOTE: CSA SWITCHES AND RECEPT GROUND TO J-BOX
 RECEPTACLES: 4 120V 15A IVORY DUPLEX GROUNDING TYPE #5320ICP
 RECEPTACLES: 1 120V 20A IVORY SINGLE GROUNDING TYPE A/C RECEPT #5081I
 SWITCHES: 1 120V 15A IVORY TOGGLE TYPE #CSB115I

HVAC

HEATING: 2 4' 1KW 120 VOLT BASEBOARD HEATER
 THERMOSTAT: 1 120V WALL MOUNT #MS26
 COOLING: 1 5,000 BTU 120V THRU WALL AIR CONDITIONER (PERFECT AIRE #PAC 5,000)

SPECIALTIES

EXTINGUISHER: IF REQUIRED BY OTHERS AT SITE

Building Notes:

- All materials are C and B Custom Modular's standards unless otherwise specified.
- All door adjustments are on site by others.
- C and B Custom Modular Inc. is not responsible for local codes or permits.
- Construction type trailer

VIN#
 17-19669 = RP9FT2010HA028003
 17-19670 = RP9FT2012HA028004
 17-19671 = RP9FT2014HA028005
 17-19672 = RP9FT2016HA028006

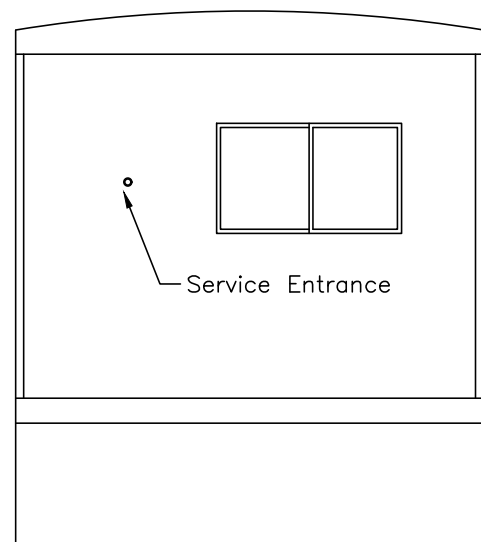
Drawing Index	
Page	Page Description
C1	Project Cover Sheet
A1	Building Elevations
A2	Production Floor /Electrical Plan

ID	Revision		Date
Scale:	Drawn:	Date:	Plot Date:
N/A	Becky B.	1/25/17	Jan 27, 2017
Serial Numbers:	Drawing Number:	DWG File Name:	
17-19563-64	1355	17-19669-72.dwg	
Approval Numbers:	Sales Representative:		
QPS-Electric	Lewis Chadwick		
Title:			
Armstrong Trailers			
10 x 24 Office (9'-9" x 20'-0")			
Sheet Description:			Page #:
Building Cover Sheet			C1

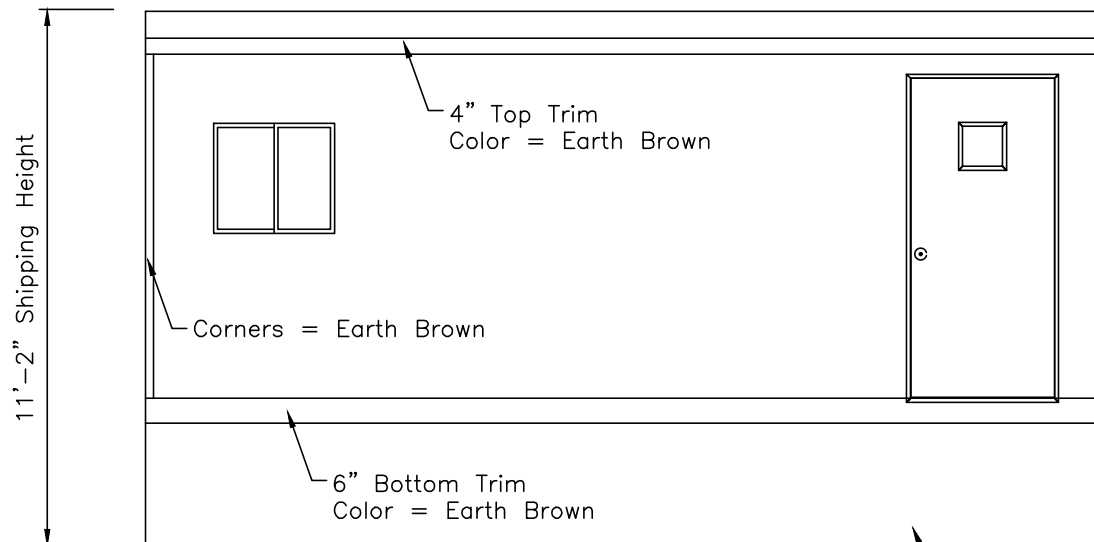
ARMSTRONG
 Manufactured Homes - Office Trailers

2224 Bloomingdale Drive
 Bristol, Indiana 46507
 PH: (574) 848-7300
 FX: (574) 848-1950

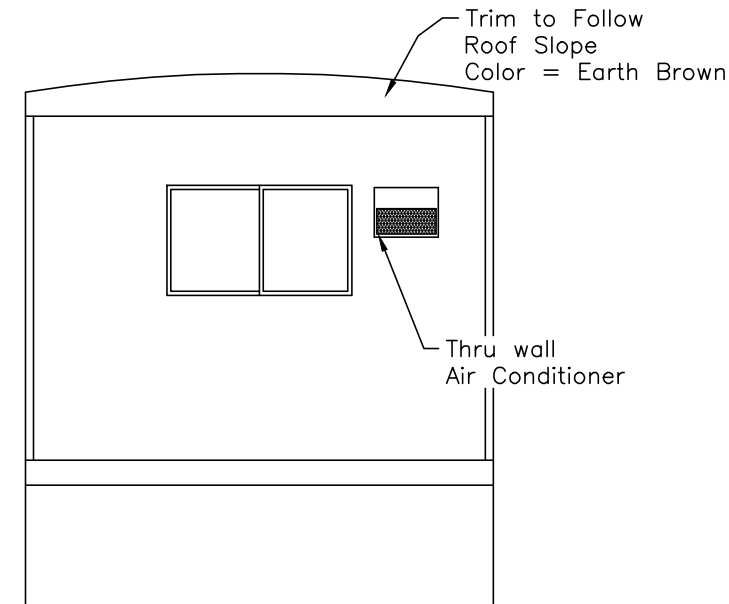
C
U
S
T
O
M
O
M
O
D
U
L
A
R
I
N
C.



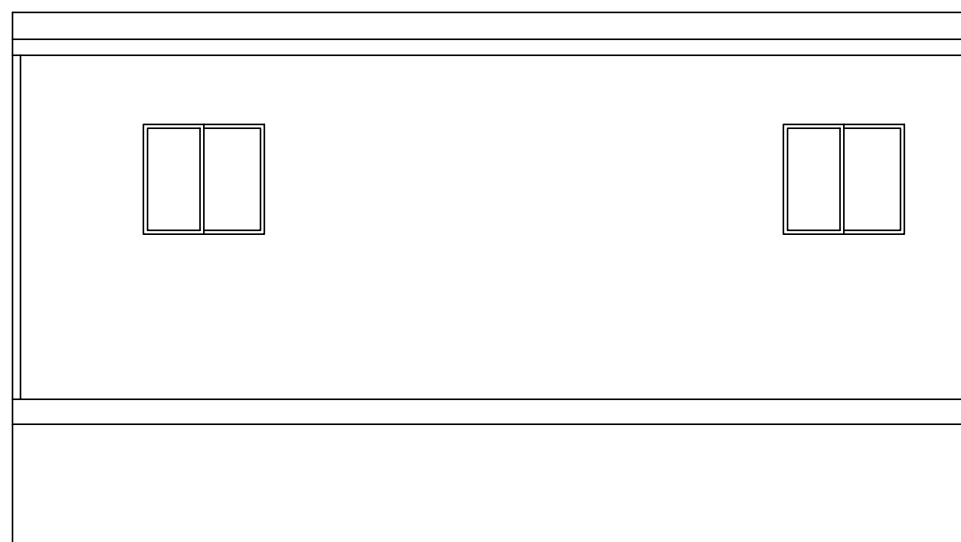
Elevation "D"



Elevation "A"



Elevation "B"



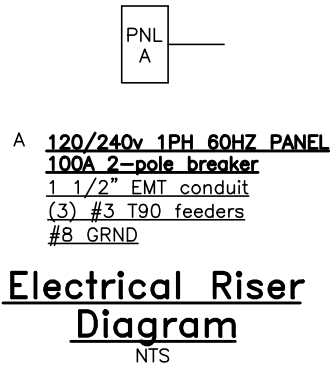
Elevation "C"

ARMSTRONG
 Manufactured Homes - Office Trailers

CUSTOMER
 MODULAR, INC.
 2224 Bloomingdale Drive
 Bristol, Indiana 46507
 PH: (574) 848-7300
 FX: (574) 848-1950

ID	Revision	Date
Scale: Noted	Drawn: Becky B.	Date: 1/25/17
Plot Date: Jan 27, 2017	Serial Numbers: 17-19563-64	Drawing Number: 1355
DWG File Name: 17-19669-72.dwg	Approval Numbers: QPS-Electric	Sales Representative: Lewis Chadwick
Title: Armstrong Trailers 10 x 24 Office (9'-9" x 20'-0")		
Sheet Description: Building Elevations		Page #: A1

DRAWING		LEGEND
SYMBOL	QTY.	DESCRIPTION
	1	120/240 electric panel (+36" AFF)
	1	120V Thermostat (+48" AFF to top)
	2	120V 1KW Electric 48" Baseboard heater (+4" A.F.F.)
	4	120V ivory duplex grounding type (+18" AFF unless noted)
	1	120V ivory single A/C Recept (+42" AFF)
	1	120V ivory toggle type (+42" AFF unless noted)
	2	120V 4' (2) tube surface mount W/Diffuser

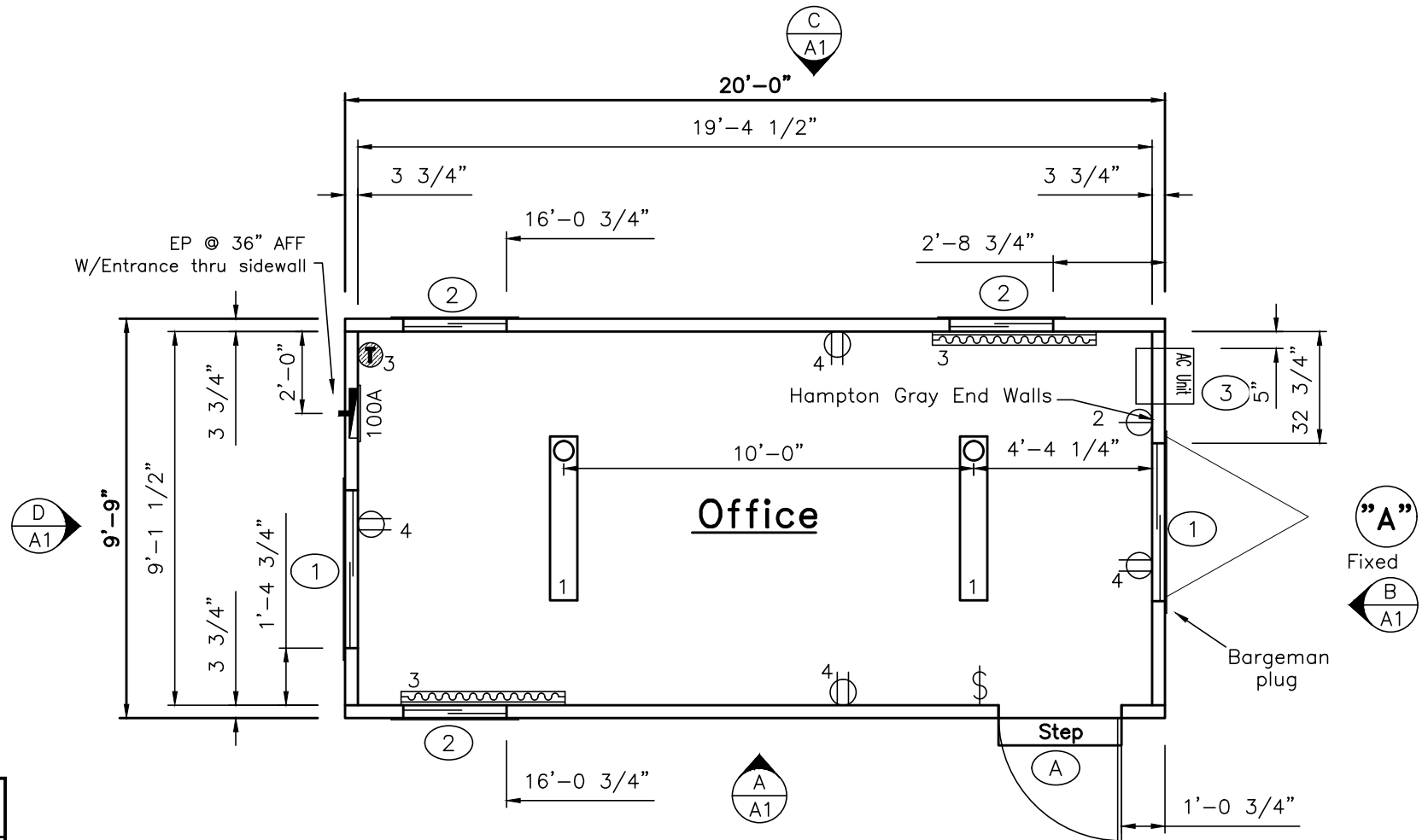


Breaker Size	Wire Size	Breaker Size	Wire Size
15A	#14	80A	#4
20A	#12	90A	#3
30A	#10	100A	#3
40A	#8	115A	#2
50A	#6	130A	#1
60A	#6	150A	1/0

Modul **A** Area Served Sq. Meter **18.1160928 ft** Area served **195 ft** Panel Voltage **240**
Main Breaker **100A** Panel Phase **1**

CKT#	Breaker size	Description	QTY	Voltage	Wattage per item	Connected Load	Load Factor	Calculated load	Total
1	15 /1	Lights (2-tube)	2	120	71.2	142.4	1.25	178	
		Exterior Lights	0	120	75	0	1.25	0	178
2	20 /1	A/C Recept	1	120	515	515	1.00	515	515
3	20 /1	Baseboard Heater (1kw)	2	120	1000	2000	1.25	2500	2500
4	15 /1	Recepts	4	120	180	720	1.00	720	720

Total connected load	3913.00
Total connected load amps	16.30
Load factor	50 905.80
Appliance Load	3015.00
CEC 2012 Elec Load Amps	16.34



DOOR, WINDOW AND OPENING SCHEDULE

SYMBOL	QTY.	DESCRIPTION	ROUGH OPENING
A	1	Door: 36x80 vinyl clad door w/10x10 sg-lite Handle: Knob keyed lock set Other: Drip cap, threshold, weather stripping Frame: Aluminum Closer: Stay Chain	36 x 80
1	2	Window: 46x27 Horizontal Slider w/single clear glass Frame: Aluminum (Mill Finish) Acc. bug screen, Self storing storms w/WHITE finish frame	46 1/2 x 27 1/4 up 41 1/4" A.F.F.
2	3	Window: 30x27 Horizontal Slider w/single clear glass Frame: Aluminum (Mill Finish) Acc. bug screen, Self storing storms w/WHITE finish frame	30 1/2 x 27 1/4 up 41 1/4" A.F.F.
3	1	Window: Framed Opening for thru wall Air Conditioner Frame: (1) Install, 5,000 BTU 120V Acc.	16 3/4 x 12 3/4 up 55 1/2" A.F.F.

ARMSTRONG
Manufactured Homes - Office Trailers

2224 Bloomingdale Drive
Bristol, Indiana 46507
PH: (574) 848-7300
FX: (574) 848-1950

CUSTOMER MODULAR, INC.

ID	Revision	Date
Scale: 1/4" = 1'-0"	Drawn: Becky B.	Date: 1/25/17
Serial Numbers: 17-19563-64	Drawing Number: 1355	DWG File Name: 17-19669-72.dwg
Approval Numbers: QPS-Electric	Sales Representative: Lewis Chadwick	
Title: Armstrong Trailers 10 x 24 Office (9'-9" x 20'-0")		
Sheet Description: Production Floor /Electrical Plan	Page #: A2	