

Wellington Manor Series

Single-Section Homes



titanhomesny.com

TITAN[®]
HOMES



About us

A home should say something about the people who live inside it. From contemporary to traditional, our homes will do just that. Trust in our ability to satisfy your specific lifestyle needs. Building homes with exceptional quality, value and satisfaction is a tradition we apply to every home we build.

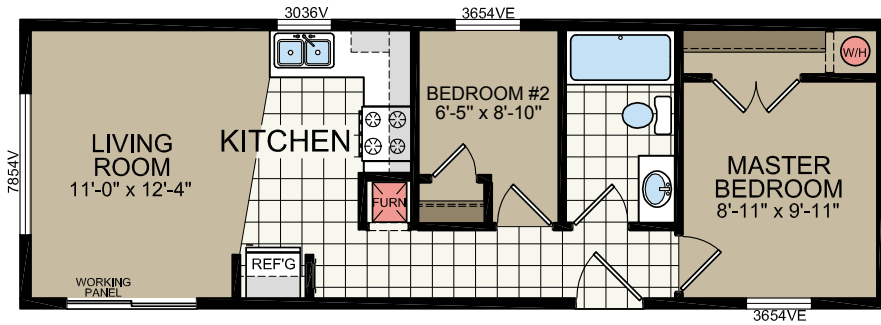
The Wellington Manor Series is designed to give you maximum flexibility to customize a home to your specific lifestyle. So, whether you select a home with outstanding standard construction specifications, or choose to customize it with optional features, Titan Homes can accommodate your needs.

At Titan, we build each and every home to meet or exceed a strict national or provincial building code, and we set even higher standards for ourselves. We focus on the things you see—and those you don't. We monitor and inspect our homes at every stage of construction. From the plumbing system to the electrical system, to the kitchen cabinets, to the closets in the bedrooms, every home we build undergoes rigorous quality inspections to ensure we're providing you our best..

“Make yourself at home with Titan Homes”

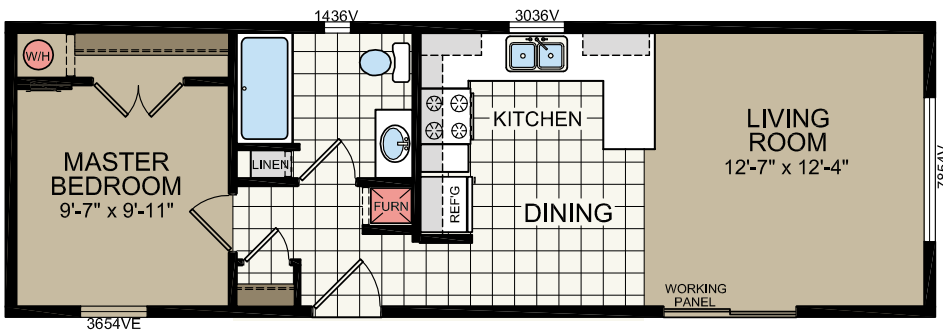
Model 060

13'-4 x 40'
2 bed-1 bath
534 sq. ft.



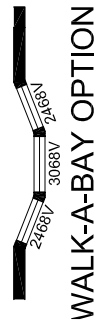
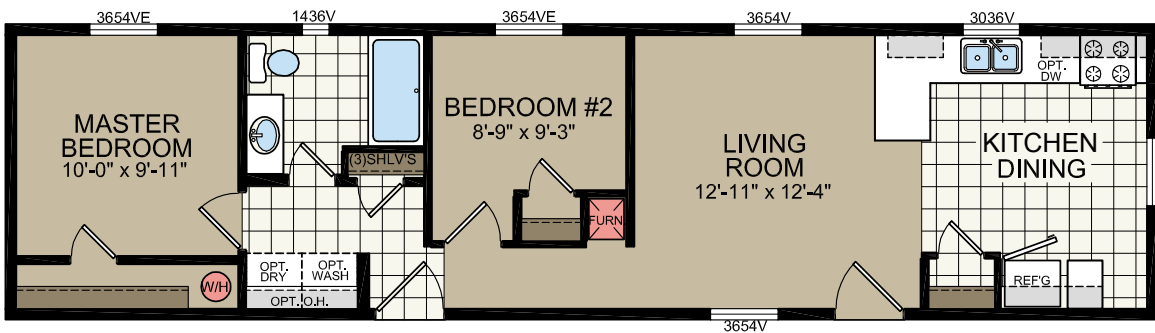
Model 081

13'-4 x 42'
1 bed-1 bath
560 sq. ft.



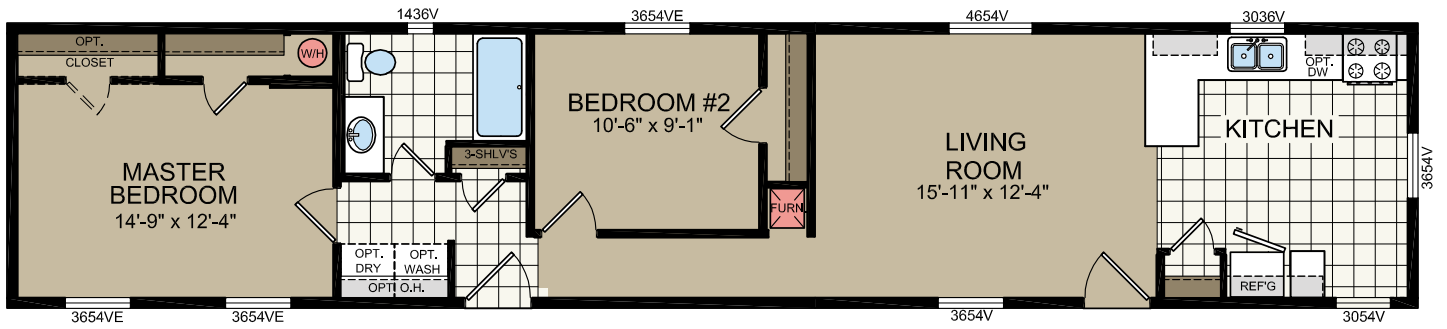
Model 376

13'-4 x 52'
2 bed-1 bath
693 sq. ft.



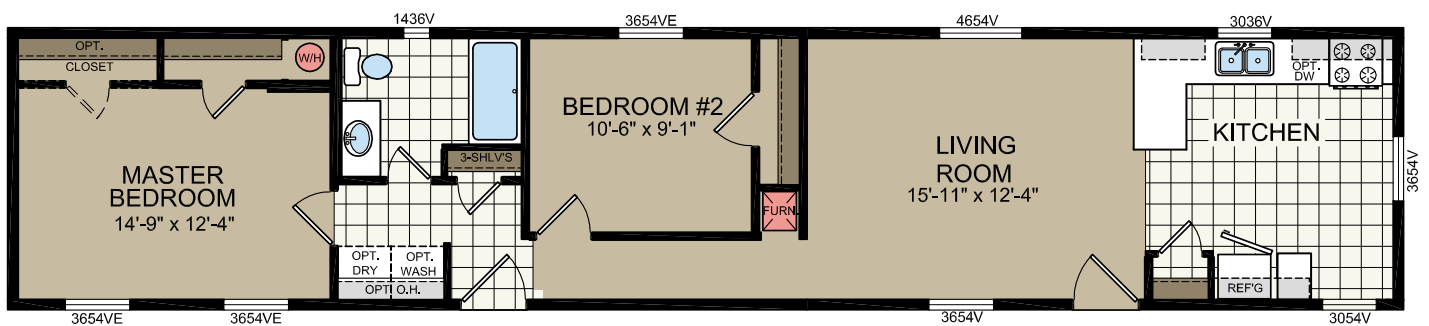
Model 829

13'-4" x 66'
2 bed-1 bath
880 sq. ft.



Model 829

13'-4" x 66'
2 bed-1 bath
880 sq. ft.



More Craftsmanship. More Choices.

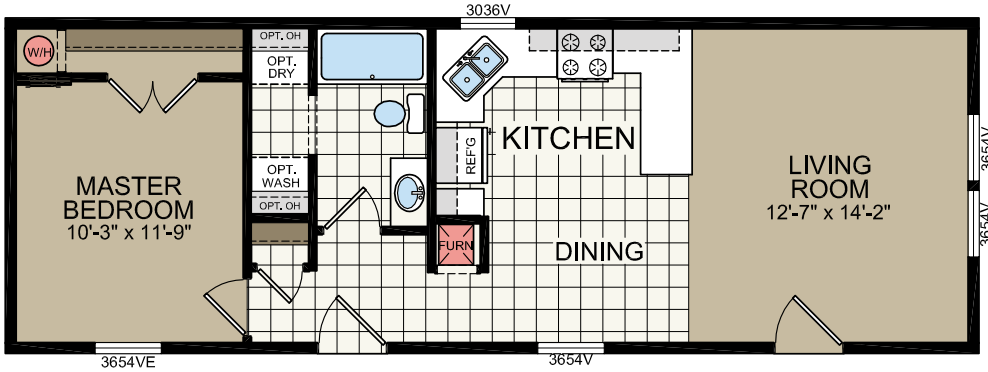


It's finding a home you can truly feel proud to call your own. It's design choices that perfectly match your need for space and comfort and frees you to express them in your own way. It's award-winning design and craftsmanship, with true attention to detail. It's a commitment to providing you with the style and features you'll enjoy for years to come. It's combining everything you would want in a home with surprising affordability.

During the past 40 years, Titan Homes has grown to become one of the most recognized and respected builders of factory-built and modular homes throughout the Northeastern United States and Canada. It's a recognition earned by consistently delivering more than our customers might expect. More innovative quality features. More home styles and personalized floor plans. More helpful customer service. More home for the money.

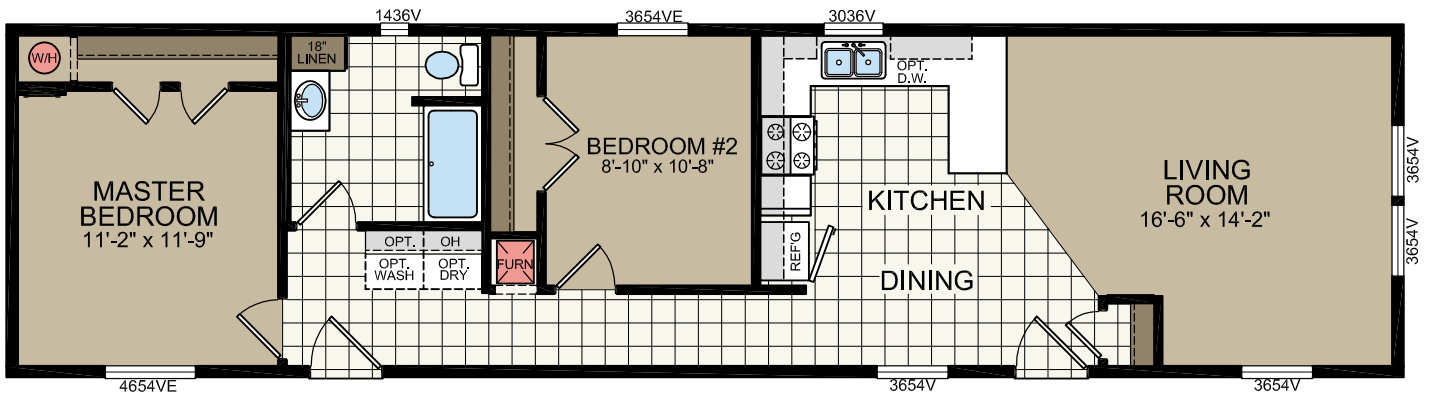
Model 000

15'-2" x 44'
1 bed-1 bath
668 sq. ft.



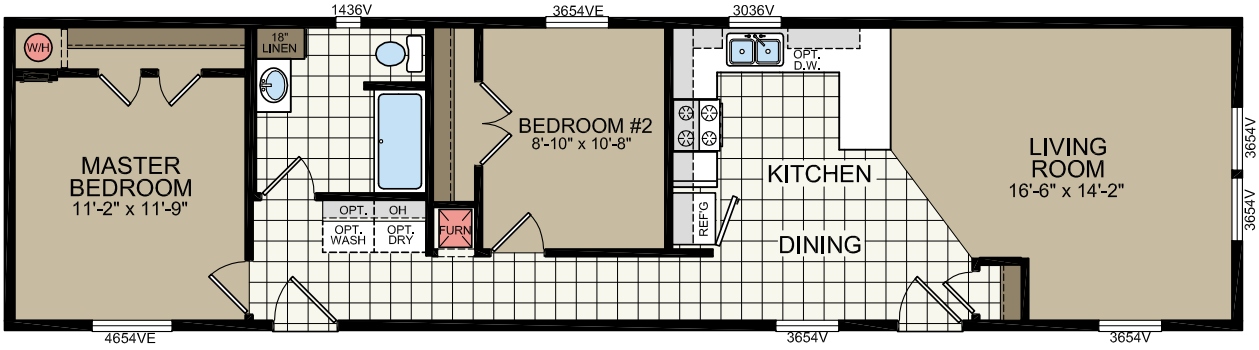
Model 935

15'-2" x 56'
2 bed-1 bath
849 sq. ft.



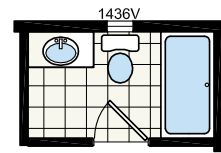
Model 306

15'-2" x 60'
2 bed-1 bath
910 sq. ft.

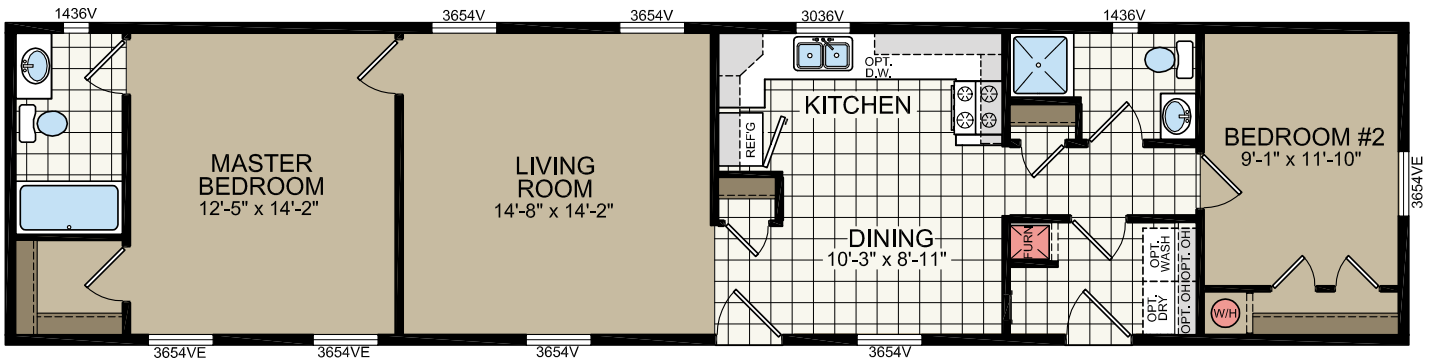


Model 577

15'-2" x 66'
2 bed-2 bath
1001 sq. ft.

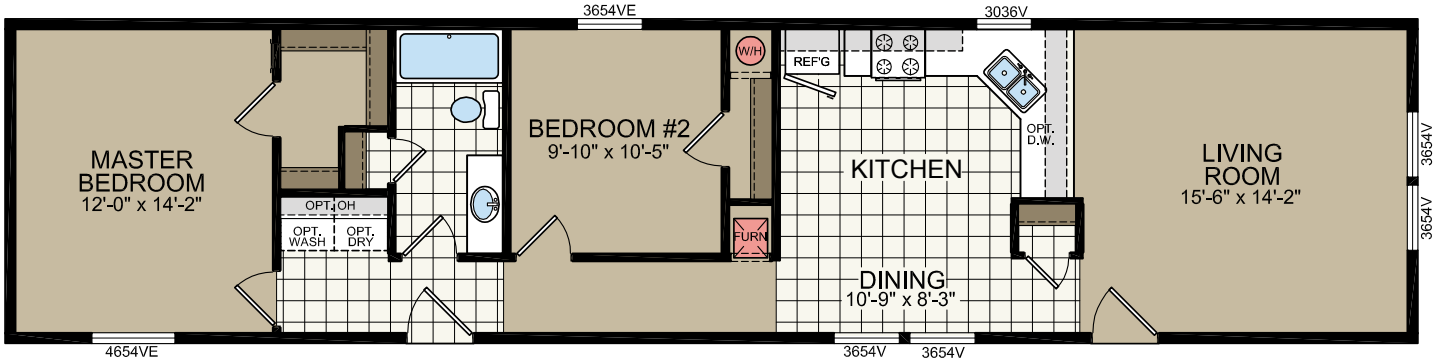


OPT. FULL BATH



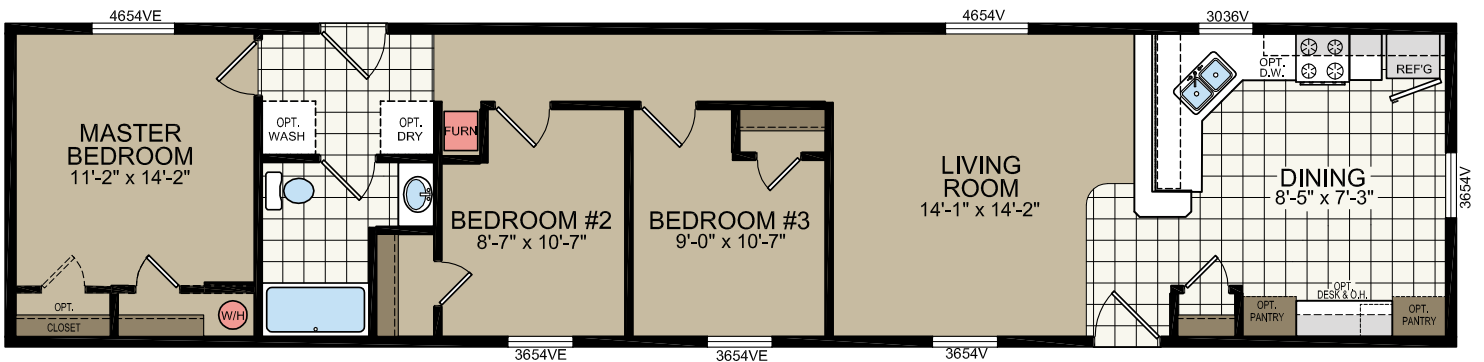
Model 360

15'-2" x 66'
2 bed-1 bath
1001 sq. ft.



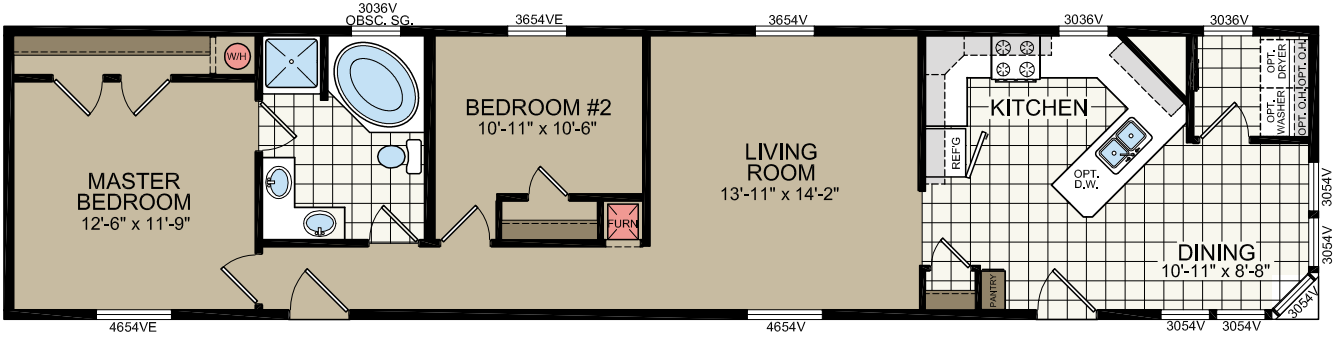
Model 355

15'-2" x 68'
3 bed-1 bath
1032 sq. ft.



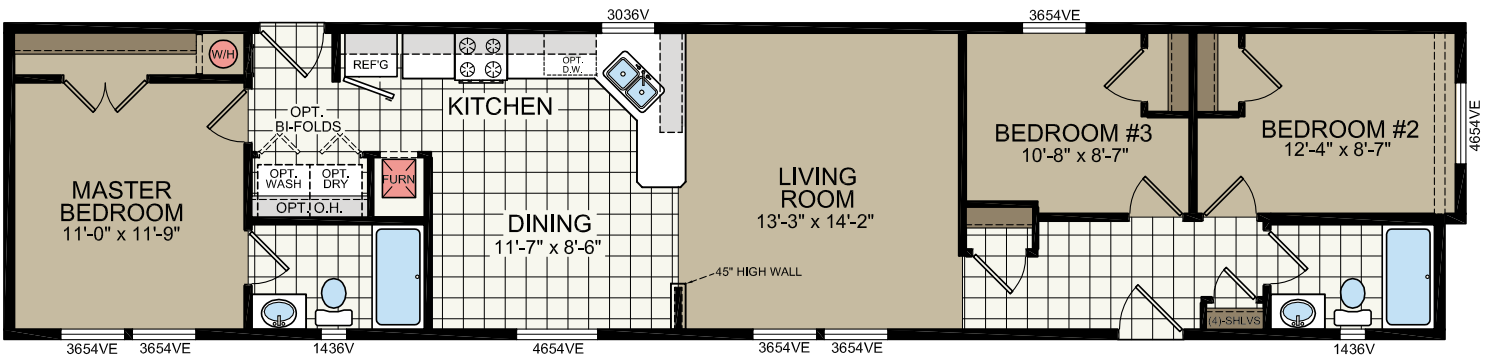
Model 387

15'-2" x 68'
2 bed-1 bath
1032 sq. ft.



Model 410

15'-2" x 70'
3 bed-2 bath
1062 sq. ft.



Wellington Manor Series

Specifications and Standard Features

Construction

- Detachable Hitch
- 4 in. Recessed Frame
- 7/16 in. OSB Sheathing
- 8 ft. Sidewall
- 8 ft. Flat Ceiling
- 40 lb. Snow Load
- 6" Gable End Eaves
- 2 in. Sidewall Eaves
- 2x6 Exterior Wall Construction
- 2x8 Floor Joist (14 ft. Wide)
- 2x10 Floor Joist (16 ft. Wide)
- ½ in. Ceiling Drywall with Textured Finish
- ½ in. Vinyl on Gypsum Interior Walls
- 7/16 in. OSB Roof Decking
- Tyvek® House Wrap
- A-277 Ontario Building Code (Available)
- Insulation Values Calculated Per Region

Electrical, Heating & Plumbing

- Dual Controlled Thermostat
- Whole House Vent Fan
- Wire and Vent for Dyer
- Exterior GFCI Receptacle
- GFCI Protected Outlets per Code
- Carbon Monoxide Detectors
- Switch to Light – Walk in Closets
- Double Bulb Ceiling Lights
- Smoke Detectors
- 125 Amp Service
- All Copper Wiring
- Water Shut-offs & Main
- Water Heater Drip Pan
- Plumb for Washer
- 40 Gallon Electric Water Heater
- Pex Water Lines
- Huntington Brass® Fixtures (Anti-Scald)
- Perimeter Heat Ducts

Exterior Finishes

- 12 in. Vinyl Raised Panel Shutters
- 36x80 Fiberglass Front Door
- 36x80 9-lite Rear Door
- 30-Year Architectural Shingles
- Shingle Over Ridge Vent
- Double 4.5 in. Vinyl Siding

Interior Finishes

- ½ in. Carpet Pad
- White 6-Panel Interior Doors with Pewter Knobs
- Mini Blinds & Valances

Kitchen Finishes

- 3 in. Laminate Backsplash
- 36 in. Counter Height
- 30 in. Overhead Cabinets
- MDF Cabinet Doors and Stiles (Available in four colors)
- Hidden Cabinet Hinges
- Pewter or Black Cabinet Door Pulls
- Adjustable Shelving in Overhead Cabinets
- Drawer Over Door Base Cabinets
- Side-Mount Roller Drawer Guides
- Deep Stainless Steel Sink
- Single-Lever Huntington Brass® Faucet
- Whirlpool® 30 in. Gas Range
- Whirlpool® 18 cu. ft. Refrigerator
- Center Shelf in Base Cabinets

Bath Finishes

- 60 in. Fiberglass Tubs with Tub Over Drapes
- Vent Fan
- 36" Vanity Height
- Mirror and Lights at Vanities
- Porcelain Commodes
- China Sinks
- Shower Stall (Per Plan)
- Soaker Tub (Per Plan)





Titan Homes
951 Route 12 South
Sangerfield, NY 13455

titanhomesny.com

CHAMPION®

MANUFACTURED BEAUTIFULLY™