

MAPLE LEAF  HOMES

Mini Homes

B U I L T F O R L I F E



Maple Leaf Homes *Built for life*



Every Maple Leaf Home is manufactured with high quality materials by experienced craftsmen. You can take comfort in knowing that your investment will be protected by some of the best warranties in the Industry as set out below.

- One year Maple Leaf Home manufacturer's warranty against defects in materials and workmanship.
- Limited lifetime warranty on roofing shingles provided by shingles manufacturer.
- Limited lifetime warranty on vinyl siding provided by siding manufacturer.
- Limited lifetime warranty on fixtures provided by fixtures manufacturer.
- Limited lifetime warranty available on windows by the window manufacturer.
- 10 year limited structural warranty available through Atlantic Home Warranty Corporation.

Maple Leaf Homes does not provide warranty after one year on any products of other manufacturers including but not limited to those set out above given the specific manufacturers warranties for their products.



* NOTE: Maple Leaf Homes reserve the right to make changes to this brochure without prior notice and without incurring any obligations to any previous, present or future customers as the result of any changes made.

Why choose a *Maple Leaf Home?*



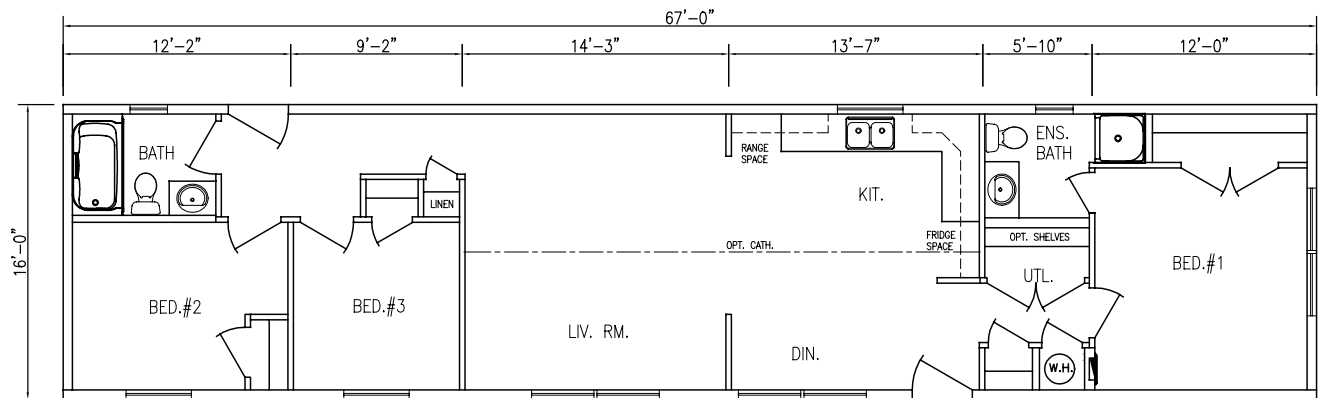
All Maple Leaf Homes come with these standard features:

- Locally owned and operated for over 30 years
- Management team with over 125 years of experience in the building industry
- Award winning manufacturer for energy efficiency and customer satisfaction
- Industry leading manufacturer of energy efficient homes
- Energuide and Energy-Star certified builder
- Over 30 convenient locations to serve you better throughout Atlantic Canada, Quebec, Ontario and the New England States
- The most comprehensive warranties in the industry to protect your investment
- High quality custom cabinetry and interior finishes
- Maintenance free exteriors with limited lifetime warranties on roofing, siding, and windows
- Efficiently manufactured indoors in a controlled environment
- In-plant quality control for every step of the manufacturing process ensures a top quality product that meets or exceeds the most up to date building codes
- Accurate scheduling – no weather delays
- No cost overruns – no waiting for sub contractors
- Environmentally friendly production – waste is reduced and recycling is maximized
- Plywood floor and wall construction
- Pre-engineered and individually custom built
- Premium building materials to assure top performance and service
- Professionally designed plans to ensure functionality for comfortable living
- Quality and innovations that are responsive to your living needs and wishes
- Custom-designed plans
- Limited lifetime warranty on roof shingles
- 30 year warranty on windows
- Limited lifetime warranty on vinyl siding
- High quality designer cabinets
- Kiln dried lumber
- Quality plumbing fixtures
- Plywood floor and wall construction
- Painted wood interior trim (no MDF)
- 10 year structural warranty available
- Energy efficient

Plan 1521

67' X 16'

1,072 SQ FT, 3 BEDROOMS, 2 BATHROOMS

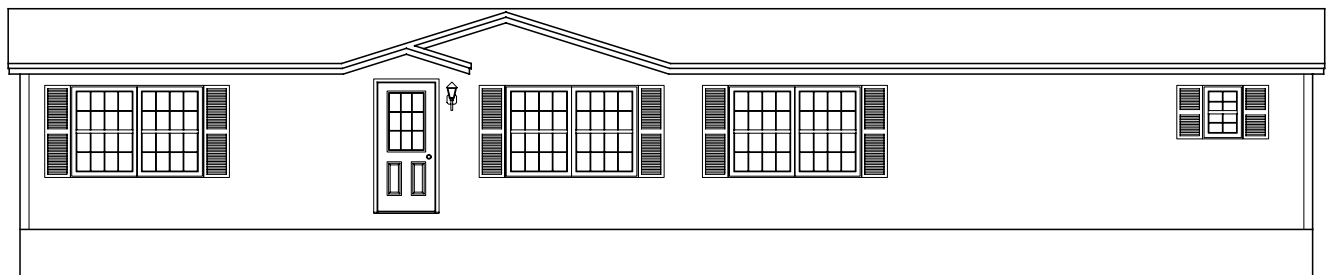
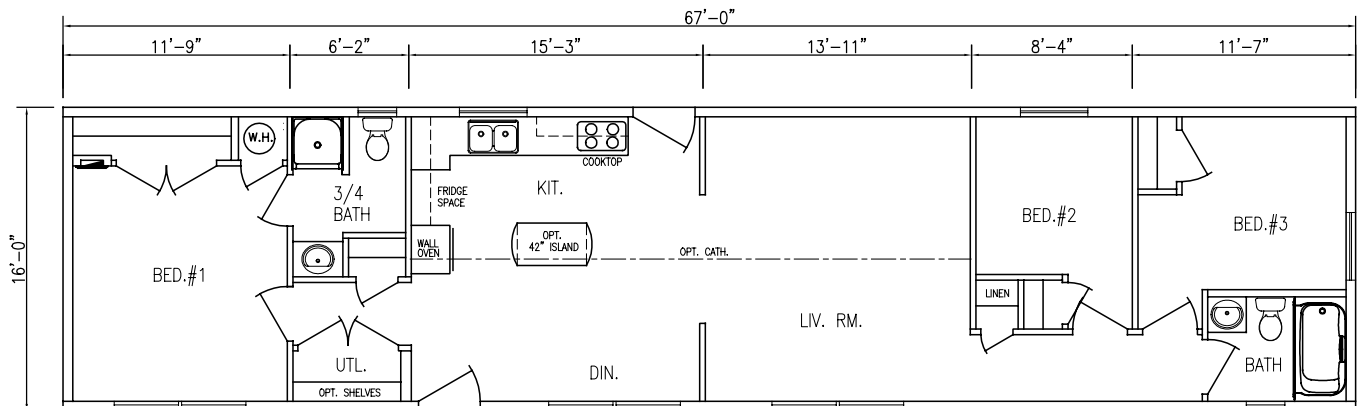


OPTIONAL IMPERIAL PLUS EXTERIOR

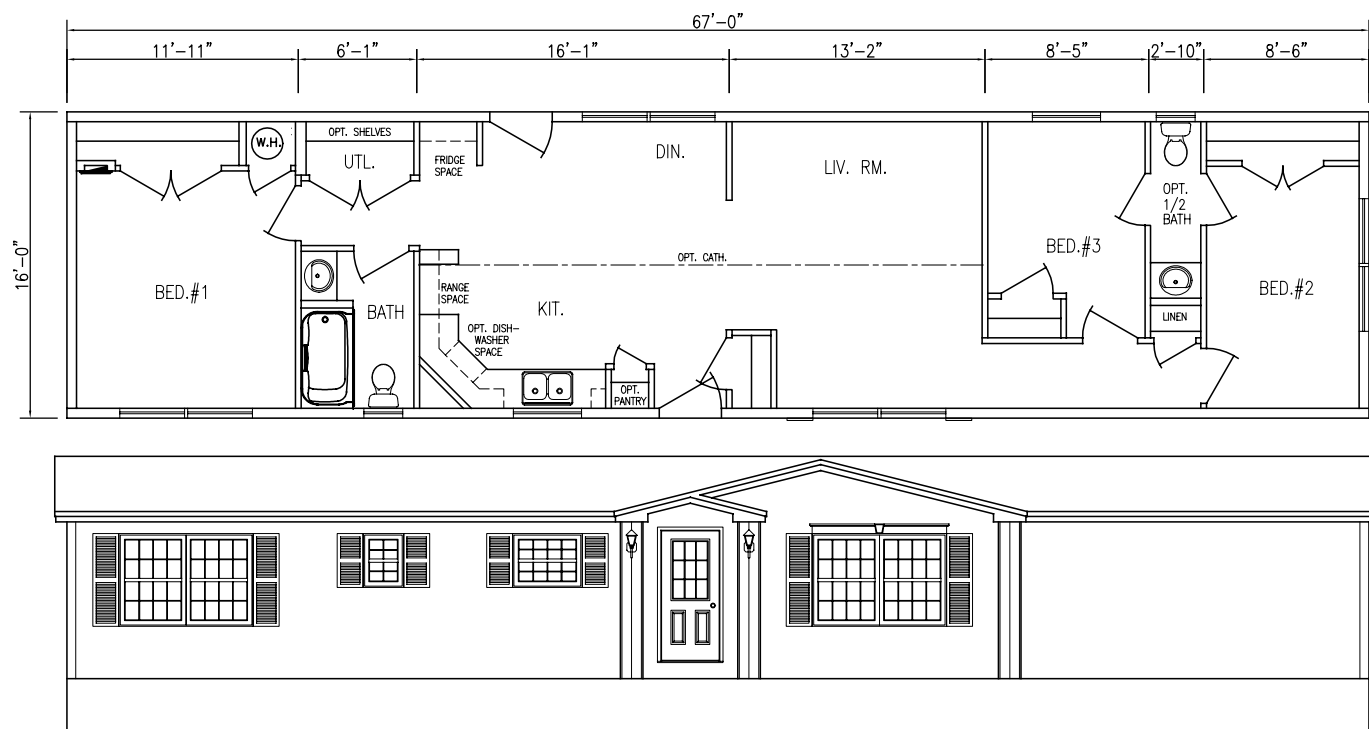
Plan 1520

67' X 16'

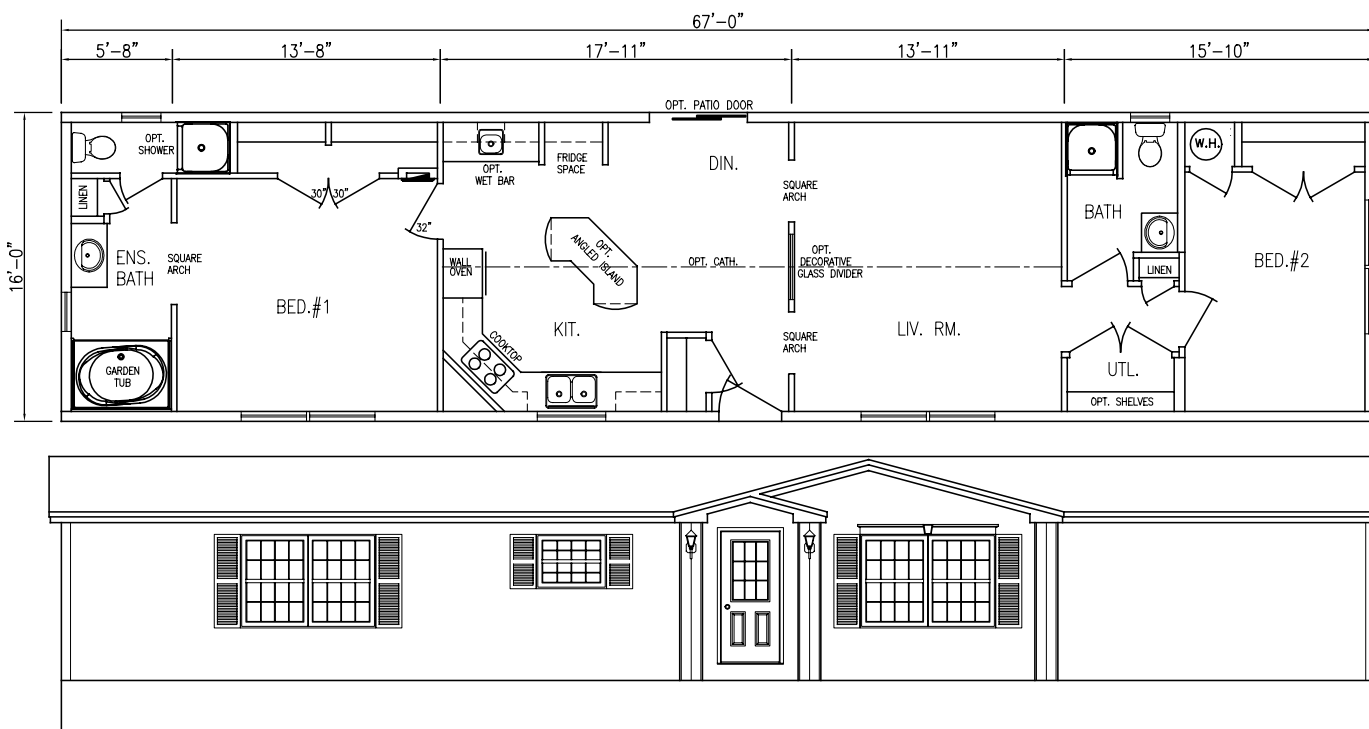
1,072 SQ FT, 3 BEDROOMS, 2 BATHROOMS



OPTIONAL IMPERIAL EXTERIOR



OPTIONAL CONDOR #1 EXTERIOR

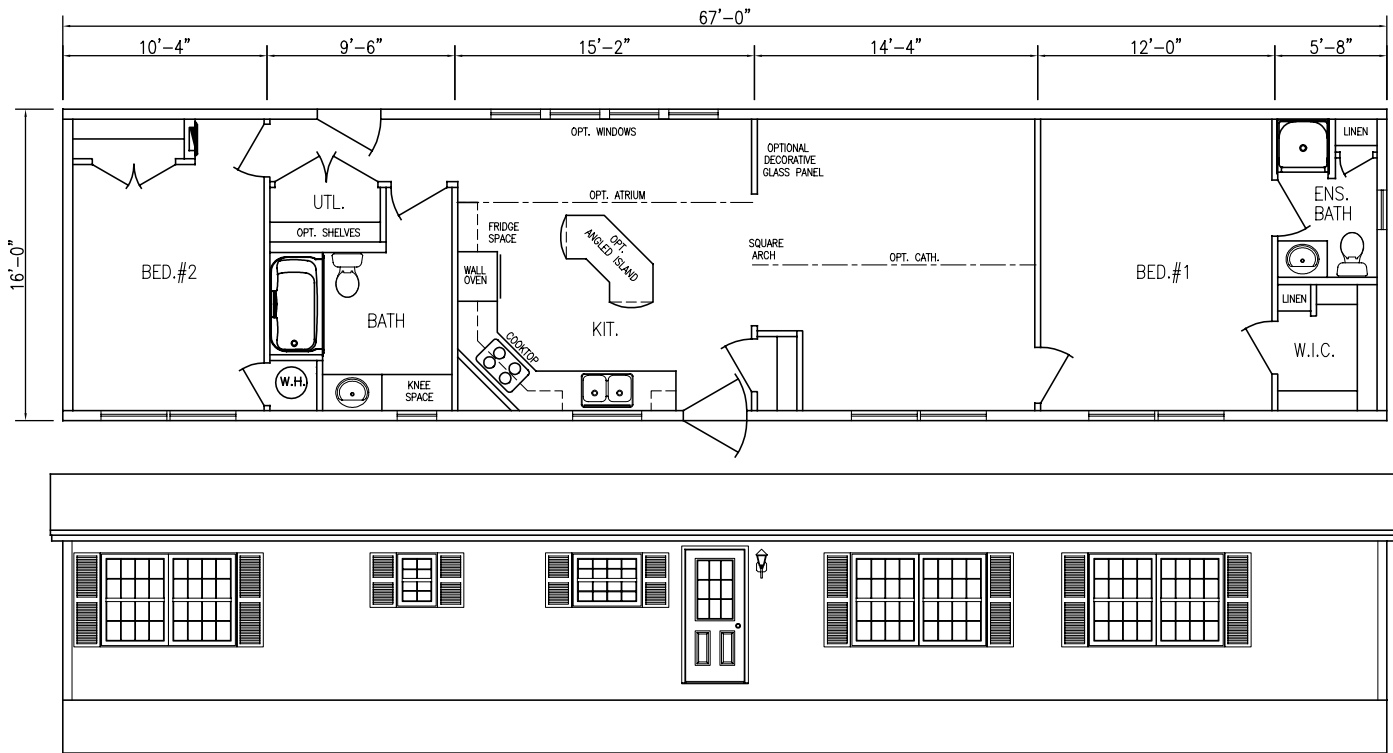


OPTIONAL CONDOR #1 EXTERIOR

Plan 1517

67' X 16'

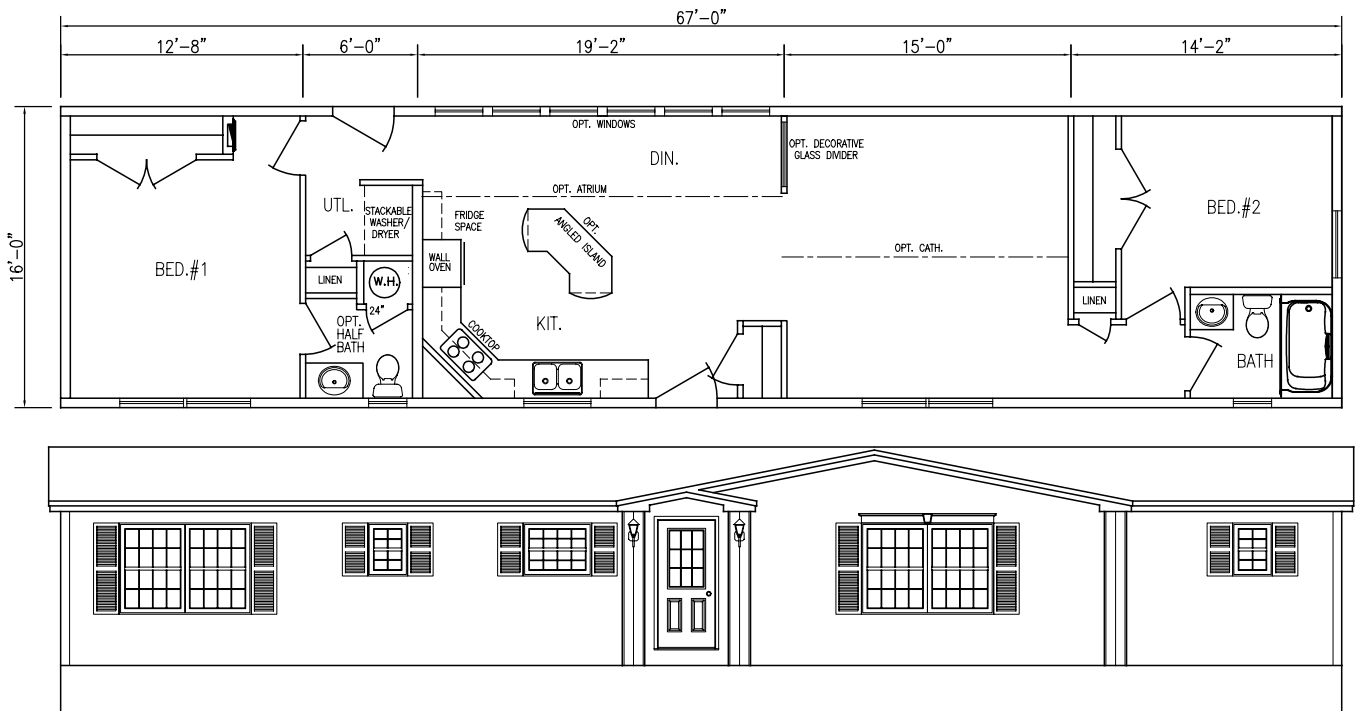
1,072 SQ FT, 2 BEDROOMS, 2 BATHROOMS



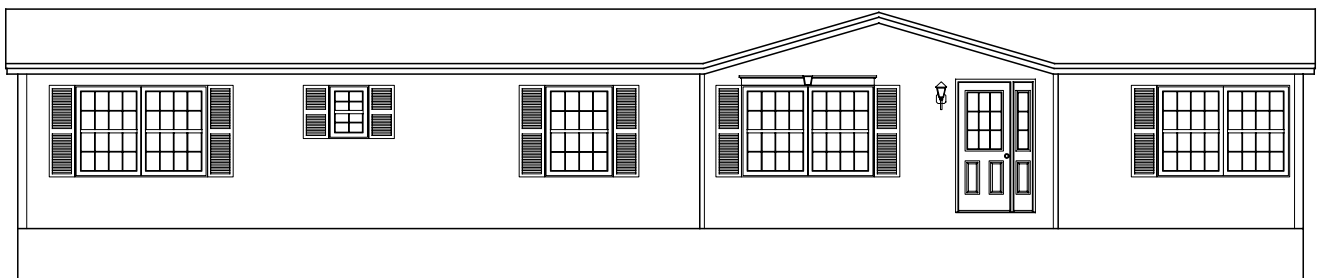
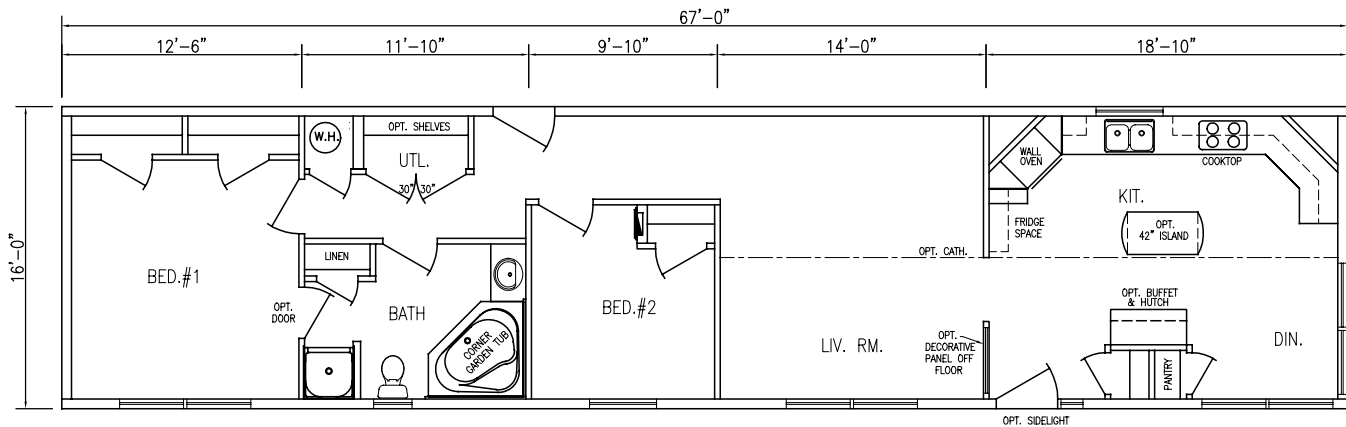
Plan 1516

67' X 16'

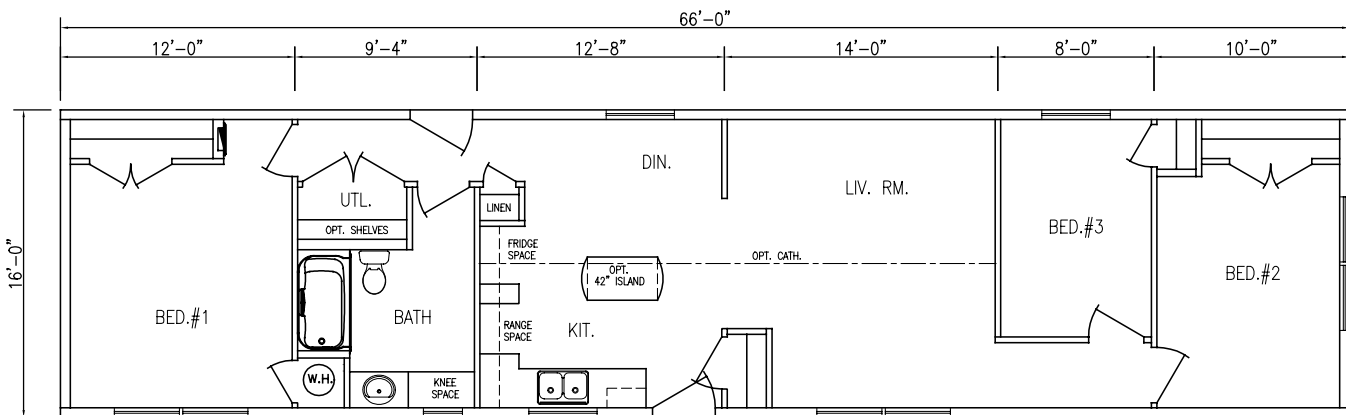
1,072 SQ FT, 2 BEDROOMS, 2 BATHROOMS



OPTIONAL CONDOR #1 EXTERIOR



OPTIONAL CONTEMPORARY EXTERIOR

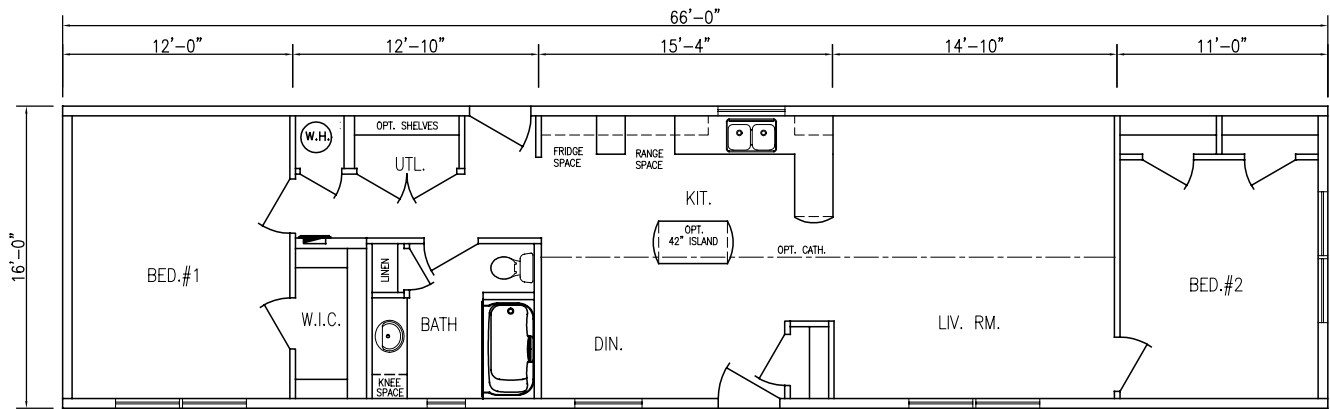


OPTIONAL TRADITIONAL EXTERIOR

Plan 1513

66' X 16'

1,056 SQ FT, 2 BEDROOMS, 1 BATHROOM

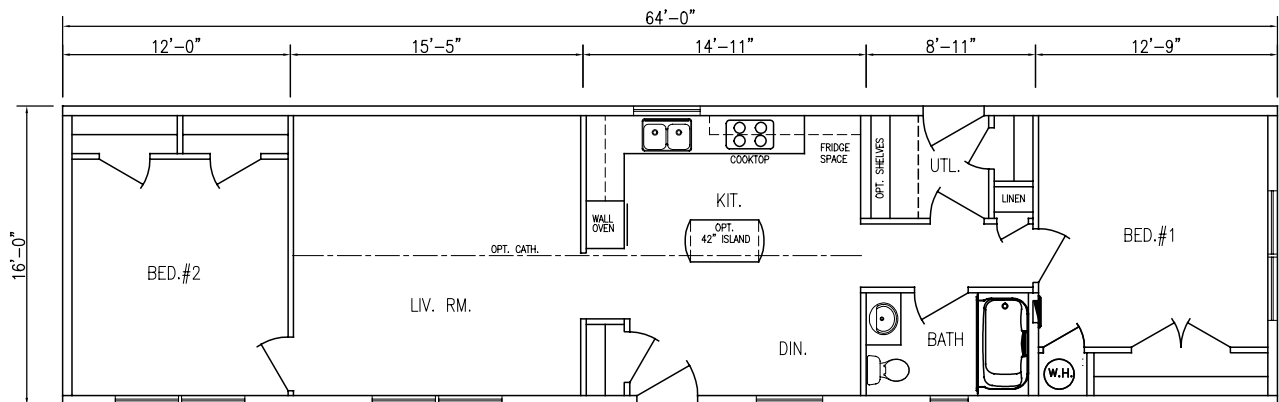


OPTIONAL CONDOR #1 EXTERIOR

Plan 1512

64' X 16'

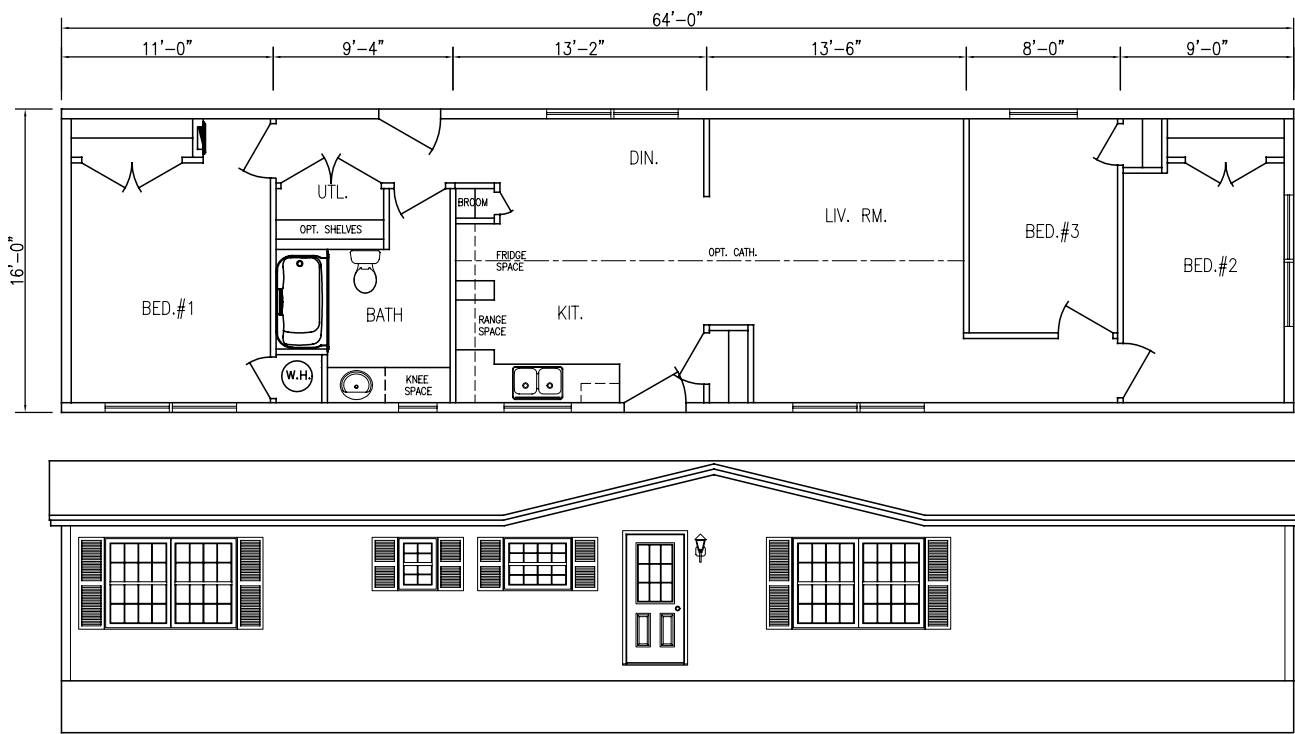
1,024 SQ FT, 2 BEDROOMS, 1 BATHROOM



OPTIONAL TRADITIONAL EXTERIOR

Plan 1511

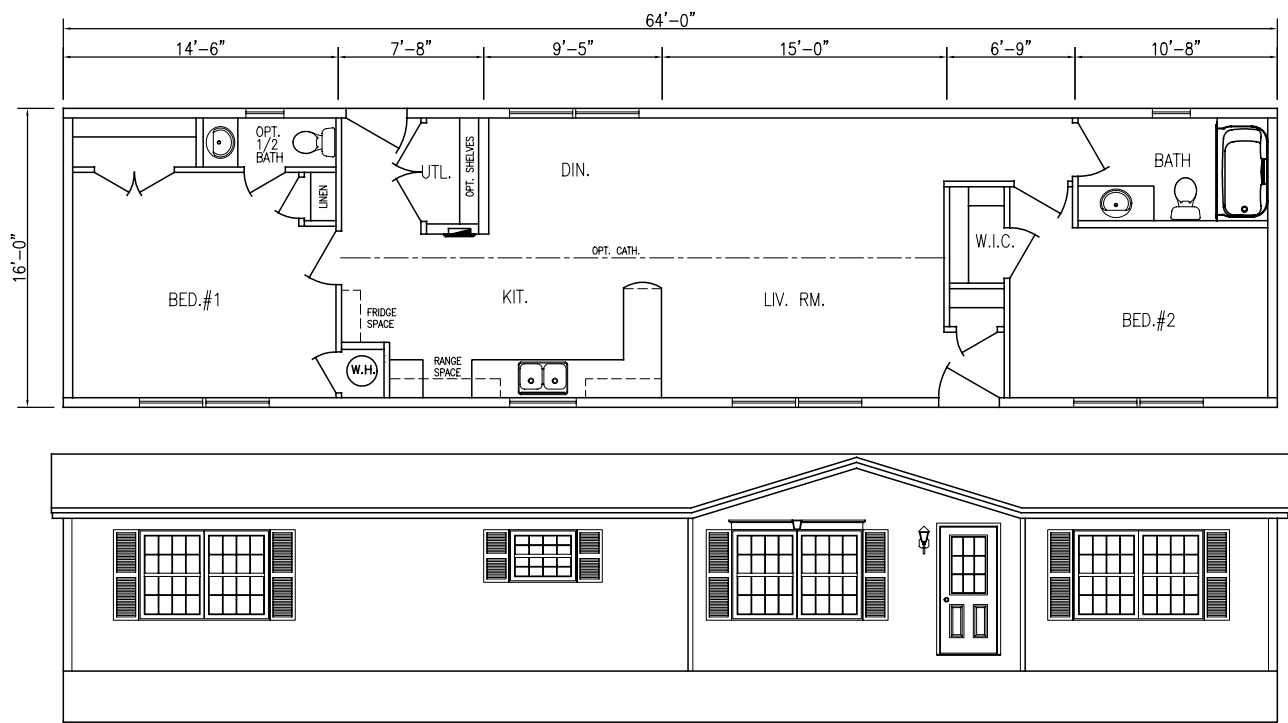
64' X 16' 1,024 SQ FT, 3 BEDROOMS, 1 BATHROOM



OPTIONAL TRADITIONAL EXTERIOR

Plan 1510

64' X 16' 1,024 SQ FT, 2 BEDROOMS, 2 BATHROOMS

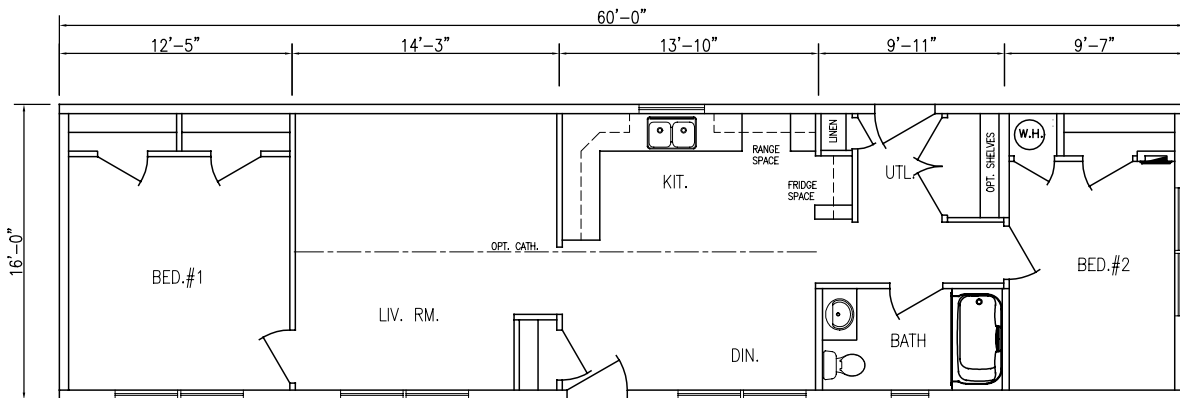


OPTIONAL CONTEMPORARY EXTERIOR

Plan 1509

60' X 16'

960 SQ FT, 2 BEDROOMS, 1 BATHROOM

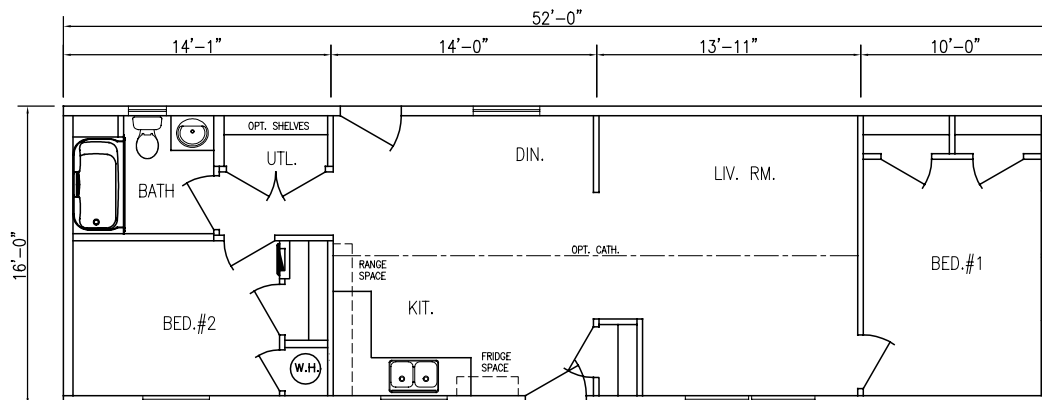


OPTIONAL CONDOR #1 EXTERIOR

Plan 1508

52' X 16'

832 SQ FT, 2 BEDROOMS, 1 BATHROOM

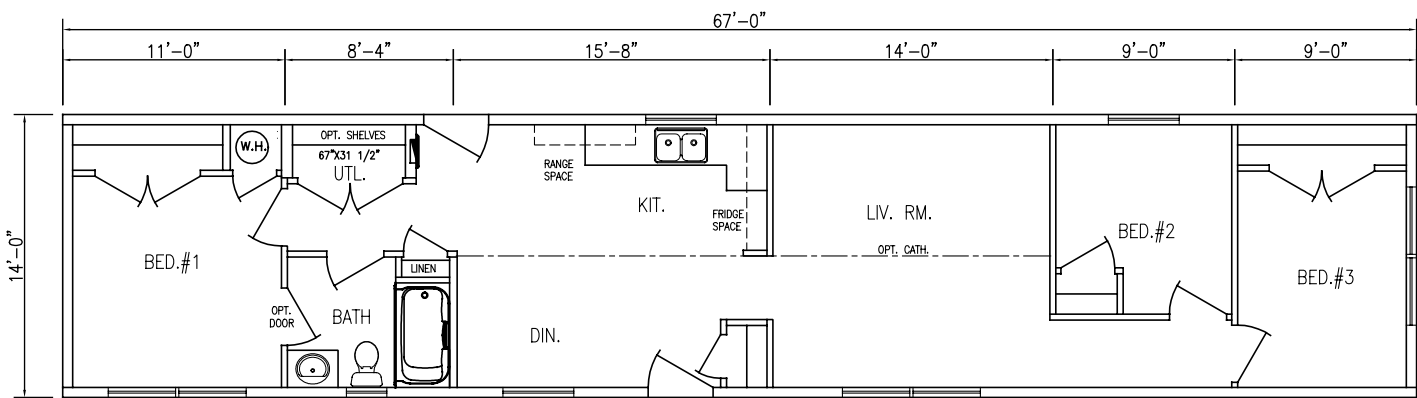


OPTIONAL COLONIAL ENTRANCE EXTERIOR

Plan 1507

67' X 14'

938 SQ FT, 3 BEDROOMS, 1 BATHROOM

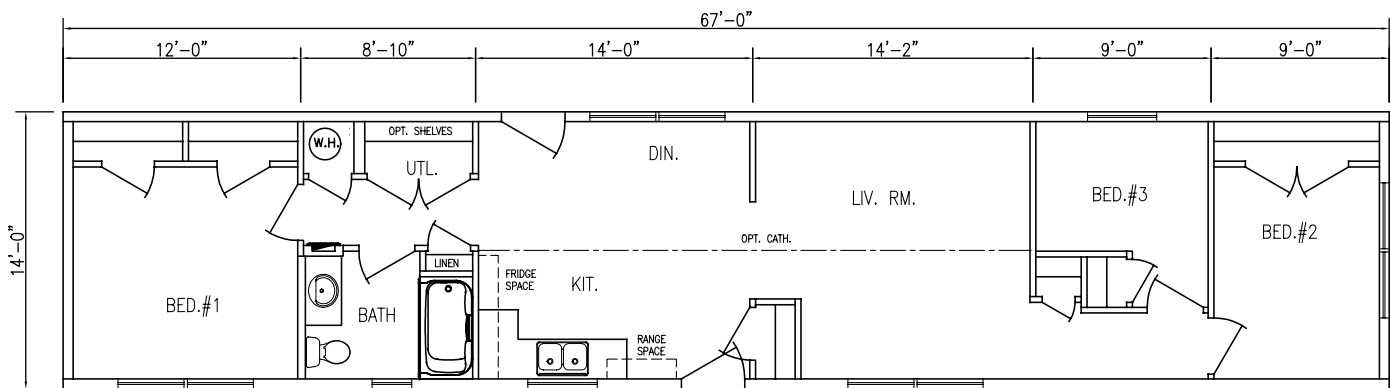


OPTIONAL CONDOR #1 EXTERIOR

Plan 1506

67' X 14'

938 SQ FT, 3 BEDROOMS, 1 BATHROOM

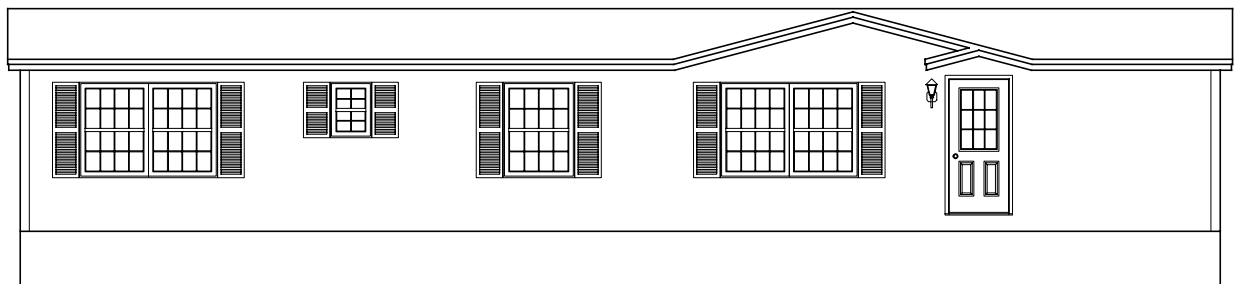
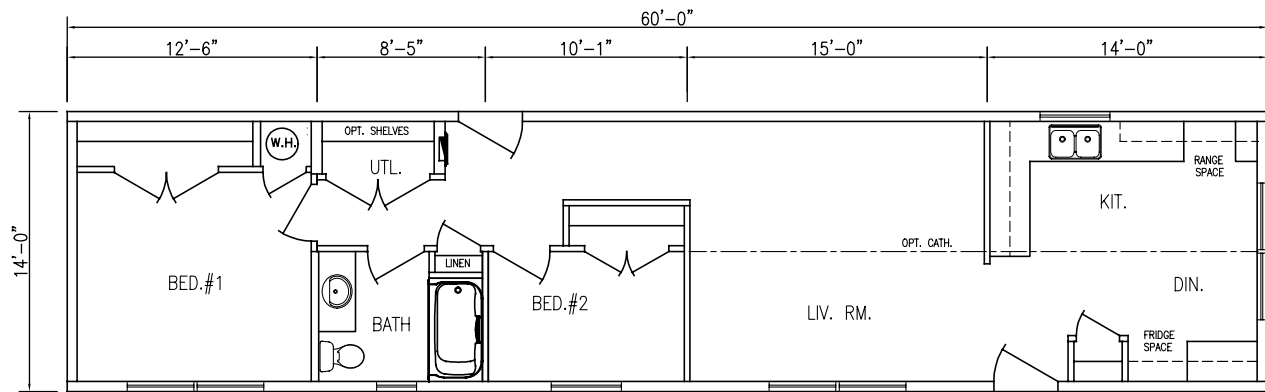


OPTIONAL CONDOR #1 EXTERIOR

Plan 1505

60' X 14'

840 SQ FT, 2 BEDROOMS, 1 BATHROOM

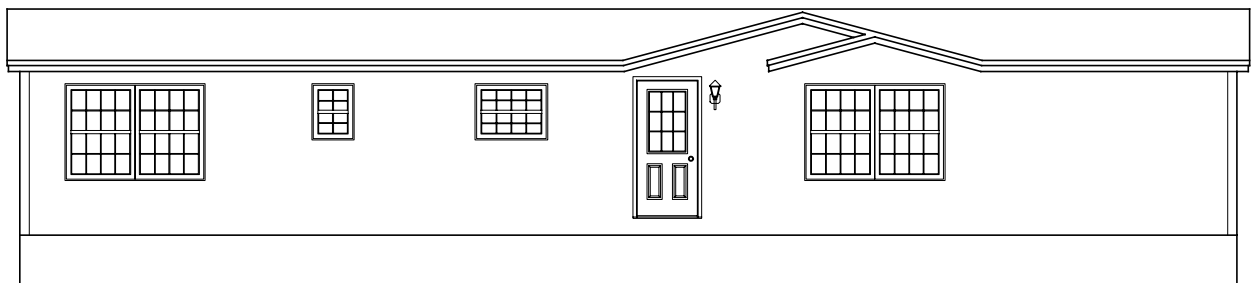
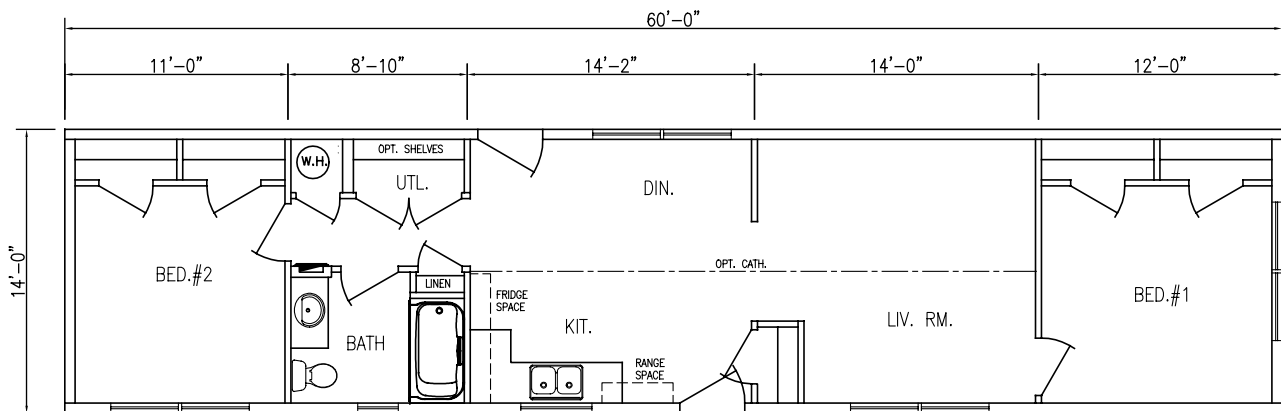


OPTIONAL IMPERIAL EXTERIOR

Plan 1504

60' X 14'

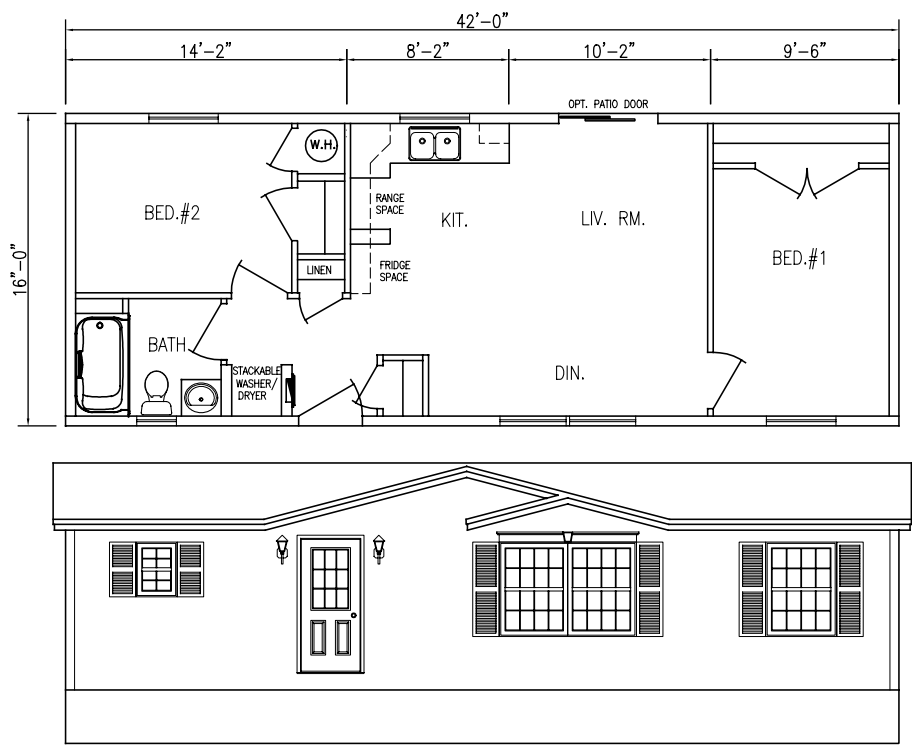
840 SQ FT, 2 BEDROOMS, 1 BATHROOM



OPTIONAL IMPERIAL EXTERIOR

Plan 1503

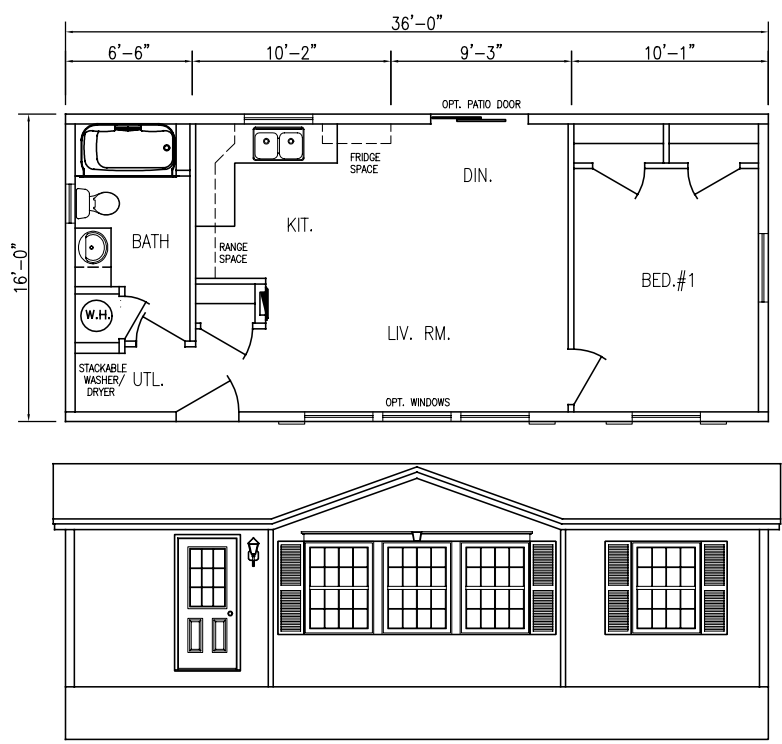
42' X 16' 672 SQ FT, 2 BEDROOMS, 1 BATHROOM



OPTIONAL IMPERIAL EXTERIOR

Plan 1502

36' X 16' 576 SQ FT, 1 BEDROOM, 1 BATHROOM

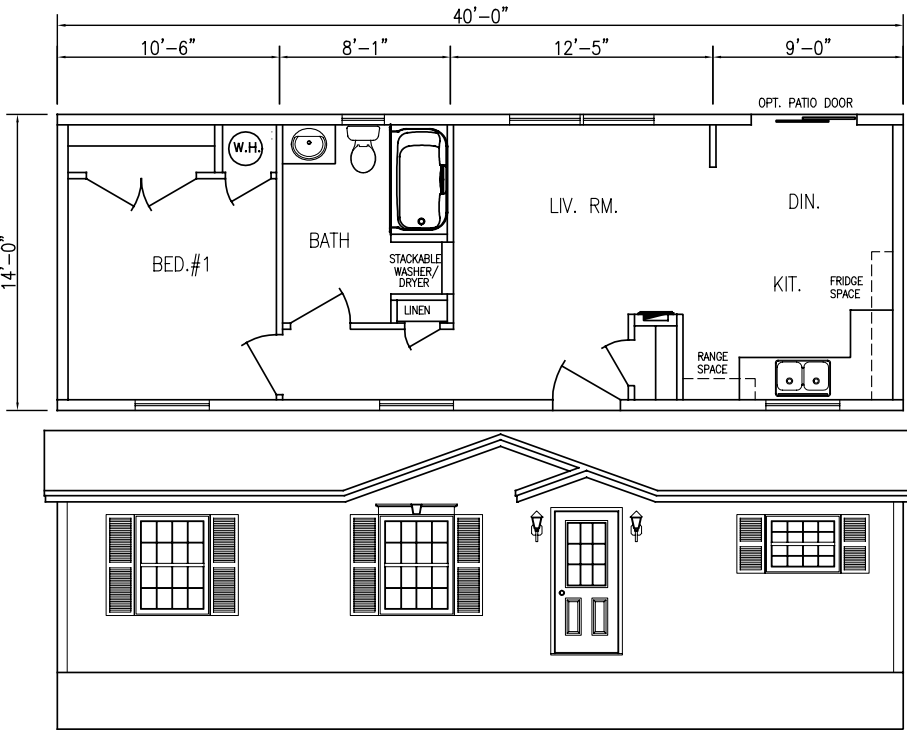


OPTIONAL CANADIANA EXTERIOR

Plan 1501

40' X 14'

560 SQ FT, 1 BEDROOM, 1 BATHROOM



OPTIONAL IMPERIAL EXTERIOR

Custom design Your Home

You have the option of choosing from our large selection of some of the best designs in the industry or, if you have your own plans, bring them in and we can work with you to build your home, your way.

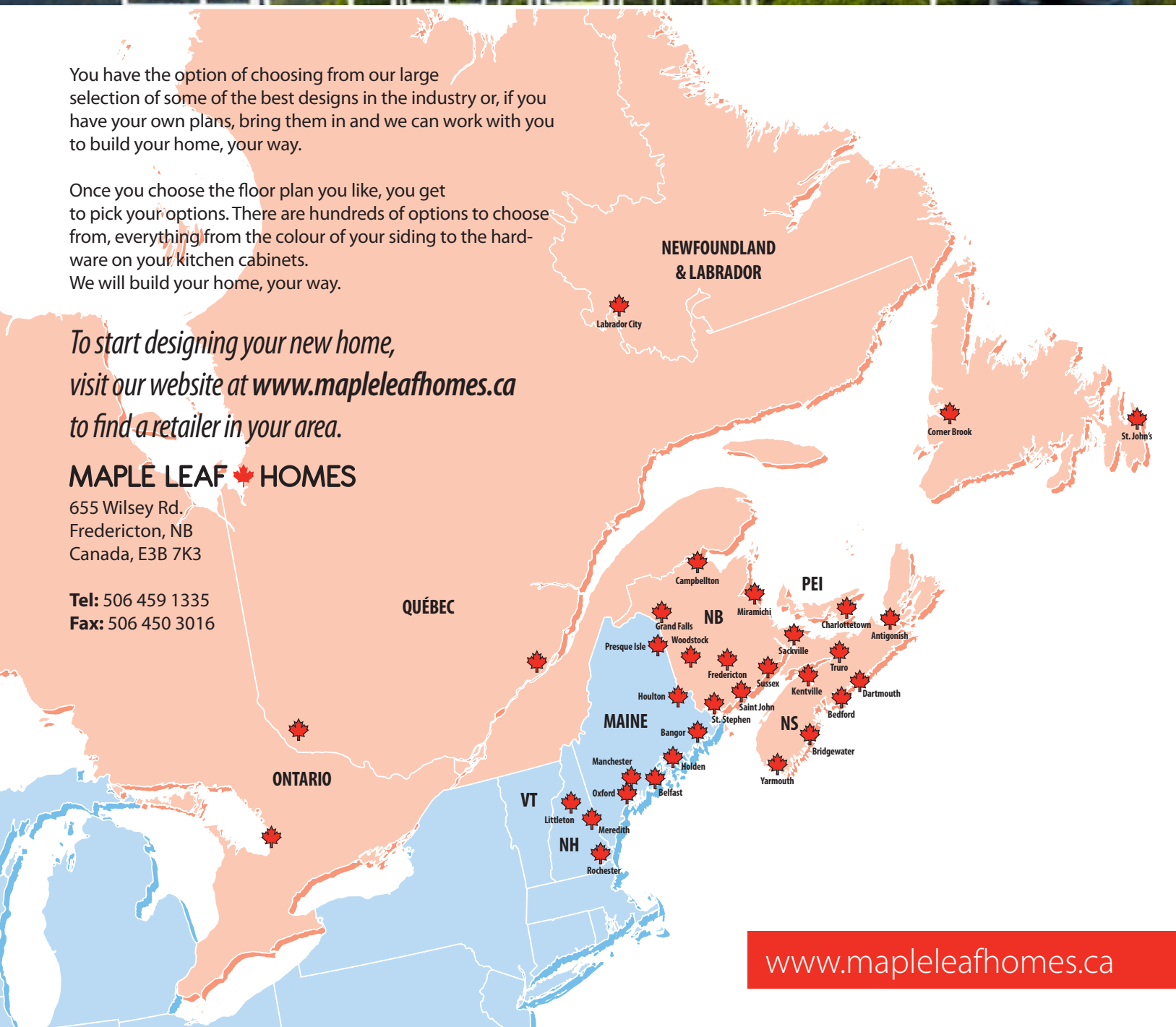
Once you choose the floor plan you like, you get to pick your options. There are hundreds of options to choose from, everything from the colour of your siding to the hardware on your kitchen cabinets. We will build your home, your way.

*To start designing your new home,
visit our website at www.mapleleafhomes.ca
to find a retailer in your area.*

MAPLE LEAF HOMES

655 Wilsey Rd.
Fredericton, NB
Canada, E3B 7K3

Tel: 506 459 1335
Fax: 506 450 3016



www.mapleleafhomes.ca