

Collingwood & Wellington Manor



Expect More from Titan Homes





About us



A home should say something about the people who live inside it. From contemporary to traditional, our homes will do just that. Trust in our ability to satisfy your specific lifestyle needs. Building homes with exceptional quality, value and satisfaction is a tradition we apply to every home we build.

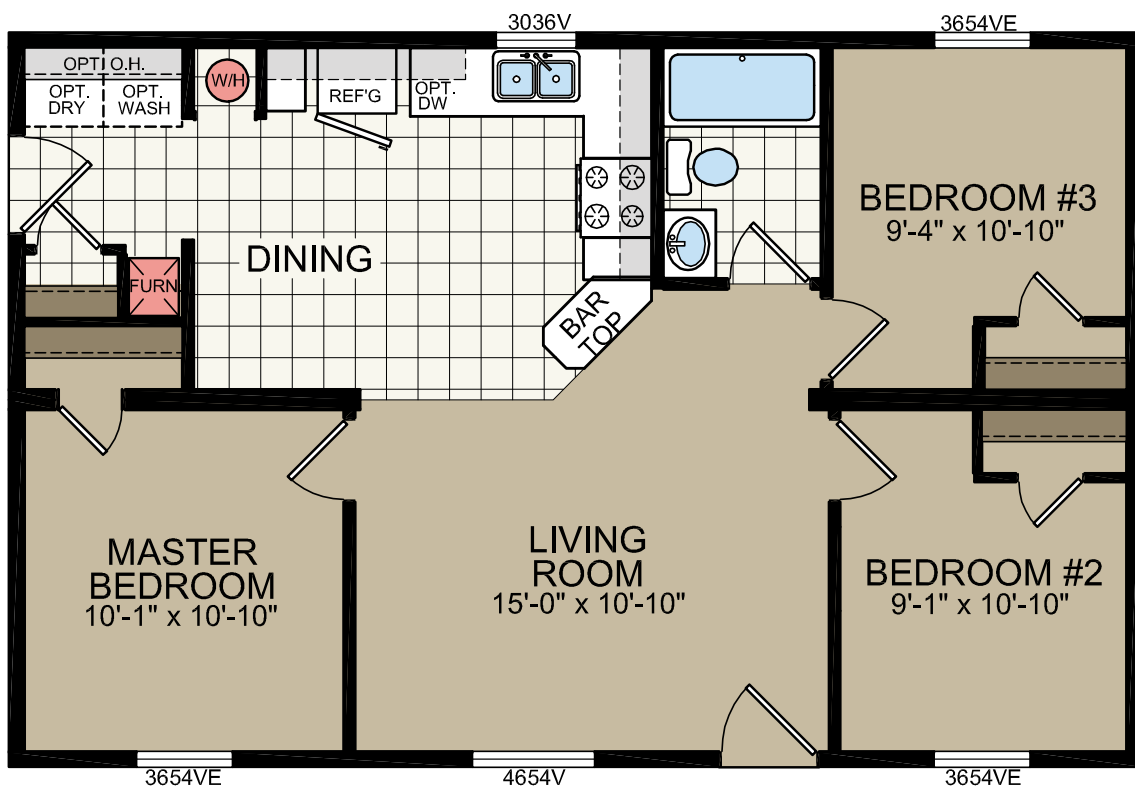
It's finding a home you can truly feel proud to call your own. It's design choices that perfectly match your need for space and comfort and frees you to express them in your own way. It's award-winning design and craftsmanship, with true attention to detail. It's a commitment to providing you with the style and features you'll enjoy for years to come. It's combining everything you would want in a home with surprising affordability.

During the past 40 years, Titan Homes has grown to become one of the most recognized and respected builders of factory-built and modular homes throughout the Northeastern United States. It's a recognition earned by consistently delivering more than our customers might expect. More innovative quality features. More home styles and personalized floor plans. More helpful customer service. More home for the money.

A proud member of the Champion Family of Homebuilders, we invite you to find out for yourself how much more to life there can be.

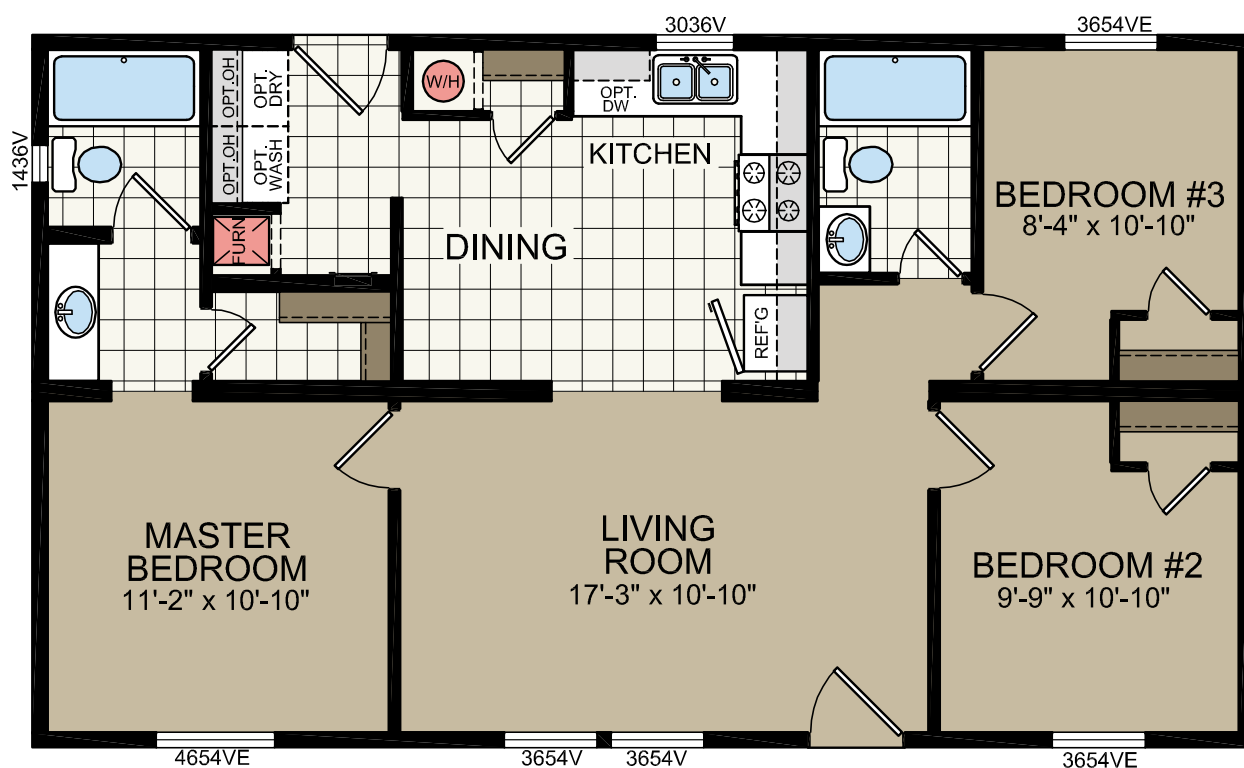
947

23'-4" x 36'
3 bed-1 bath
840 sq. ft.

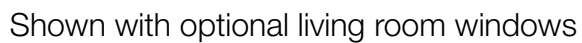


921

23'-4" x 40'
3 bed-2 bath
934 sq. ft.

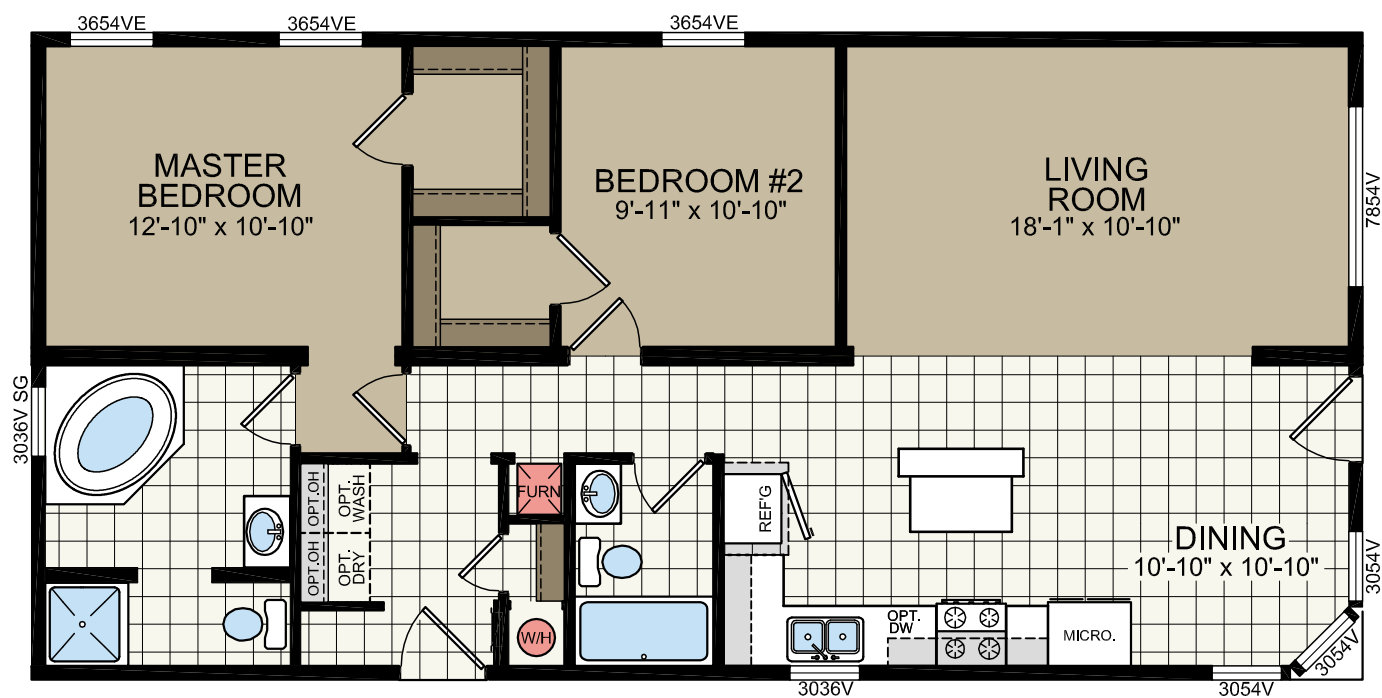


23'-4" x 44'
2 bed-2 bath
1001 sq. ft.



643

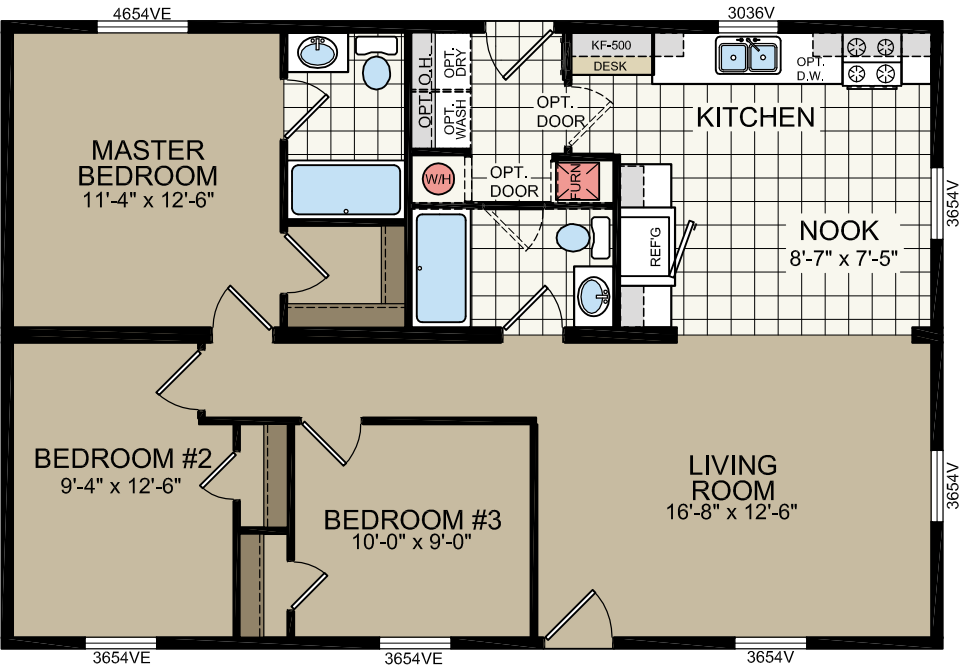
23'-4" x 48'
2 bed-2 bath
1120 sq. ft.



A single-story modular home with brown horizontal siding and white trim. The house features a central entrance with a small porch and a large double window. The roof is dark brown. The house is surrounded by a green lawn and trees. In the top left corner, there is an orange box with the number 948 and the dimensions 26'-8" x 40', 3 bed-2 bath, 1066 sq. ft.

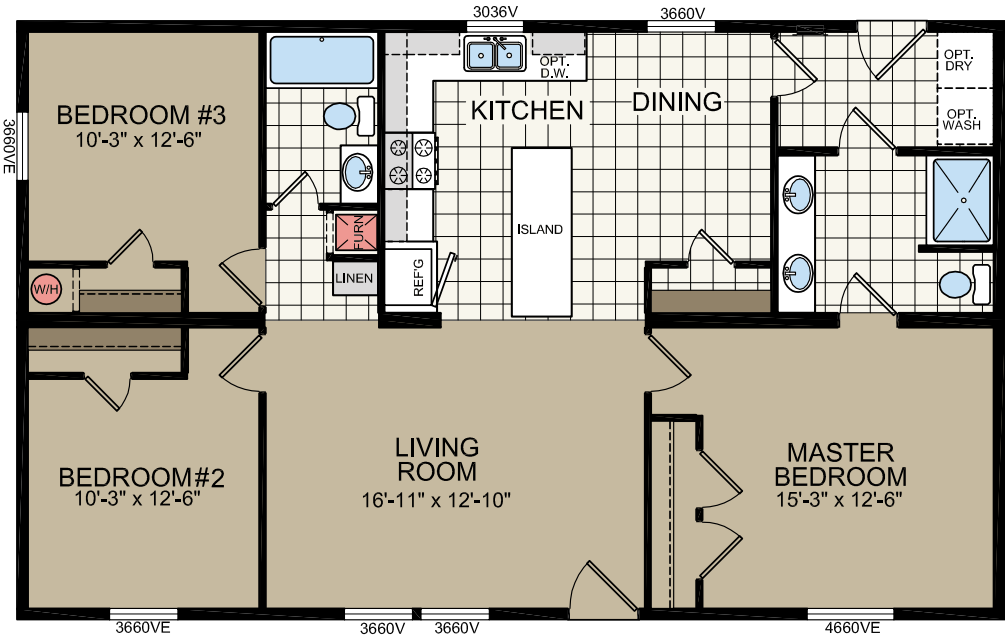
511

26'-8" x 40'
3 bed-2 bath
1066 sq. ft.



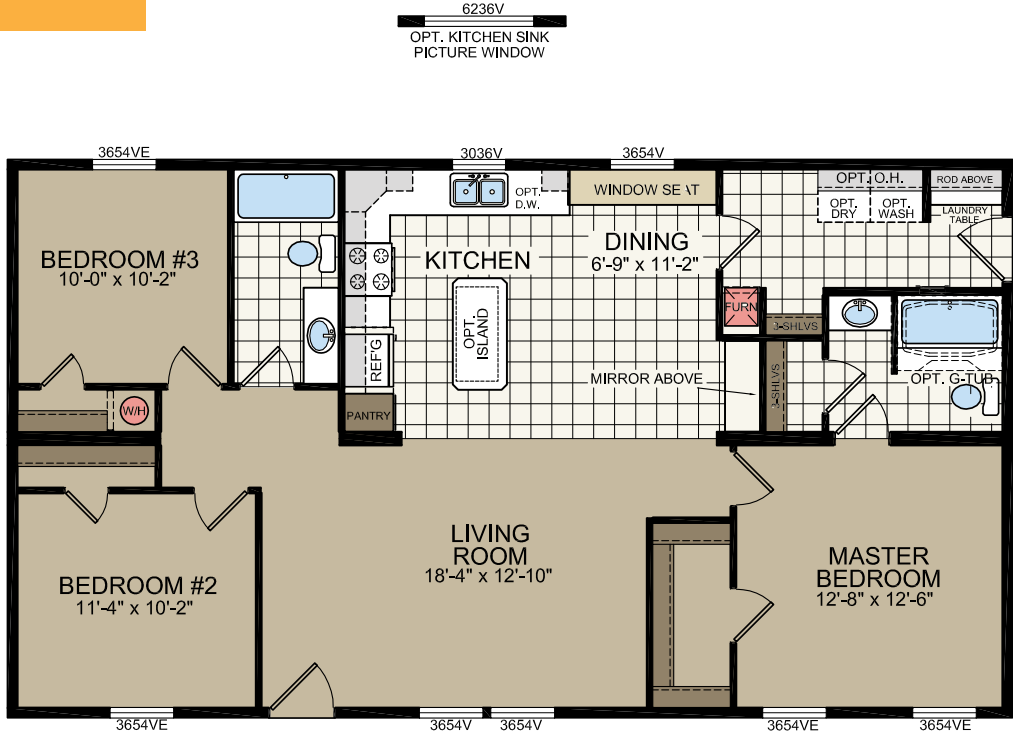
563

26'-8" x 44'
3 bed-2 bath
1174 sq. ft.



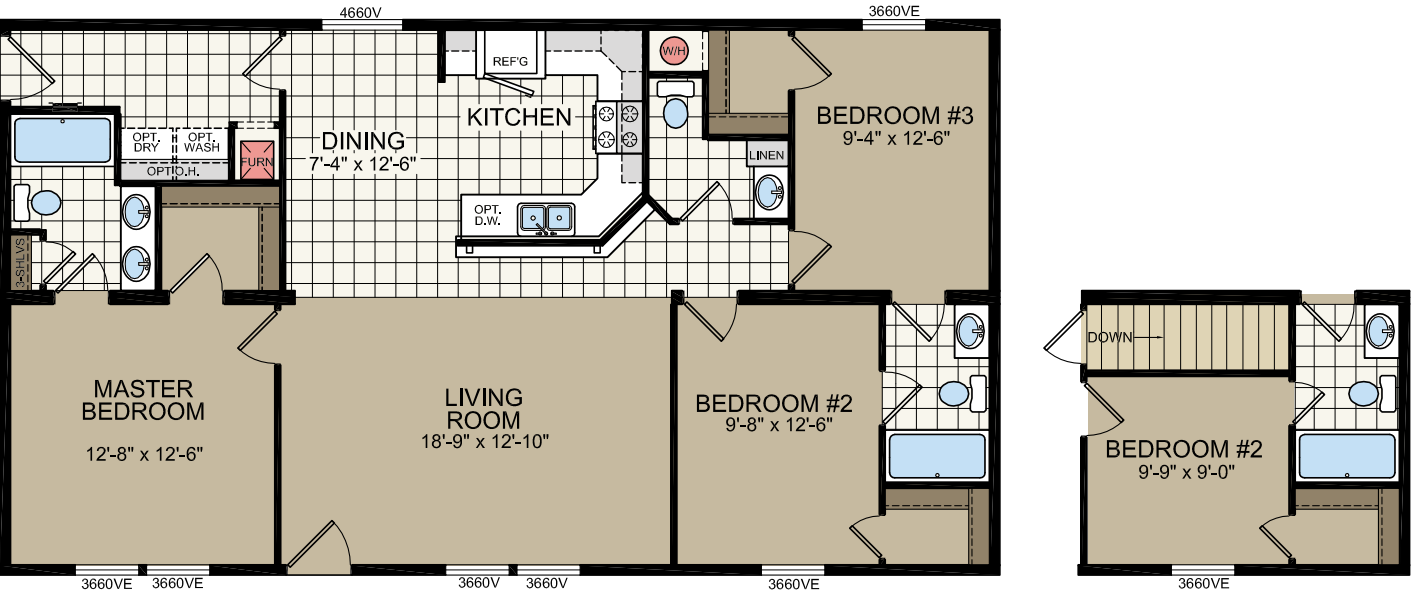
598

26'8" x 48'
3 bed-2 bath
1280 sq. ft.



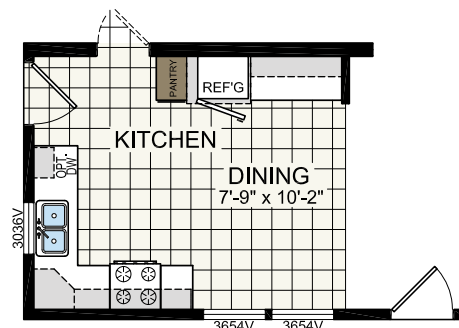
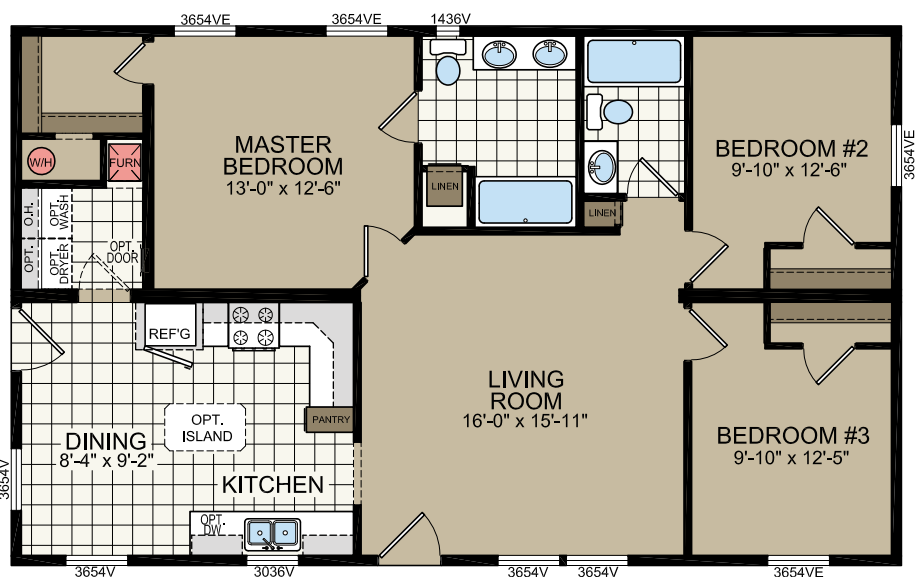
602

26'-8" x 48'
3 bed-2.5 bath
1280 sq. ft.

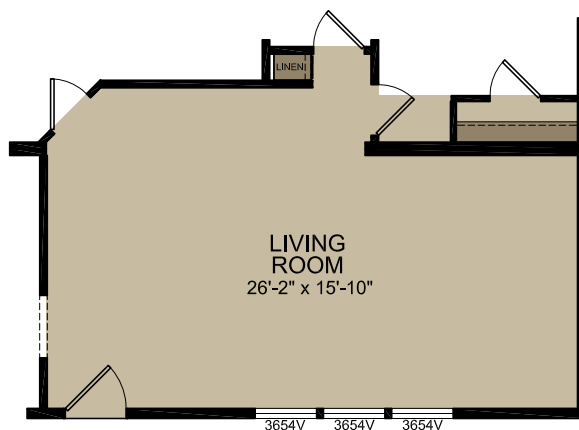


619

26'-8" x 44'
3 bed-2 bath
1173 sq. ft.



OPT. KITCHEN/DINING ROOM



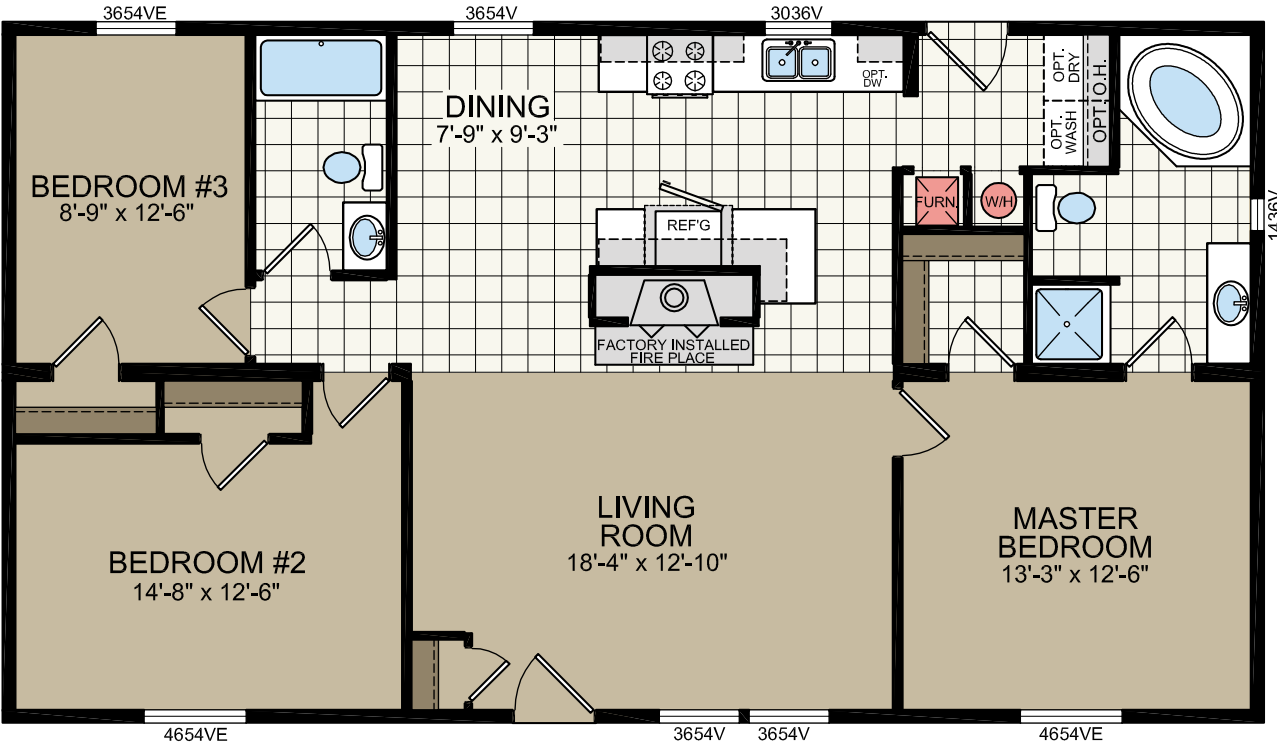
OPT. LIVING ROOM

26'-8" x 48'
2 bed-2 bath
1280 sq. ft.



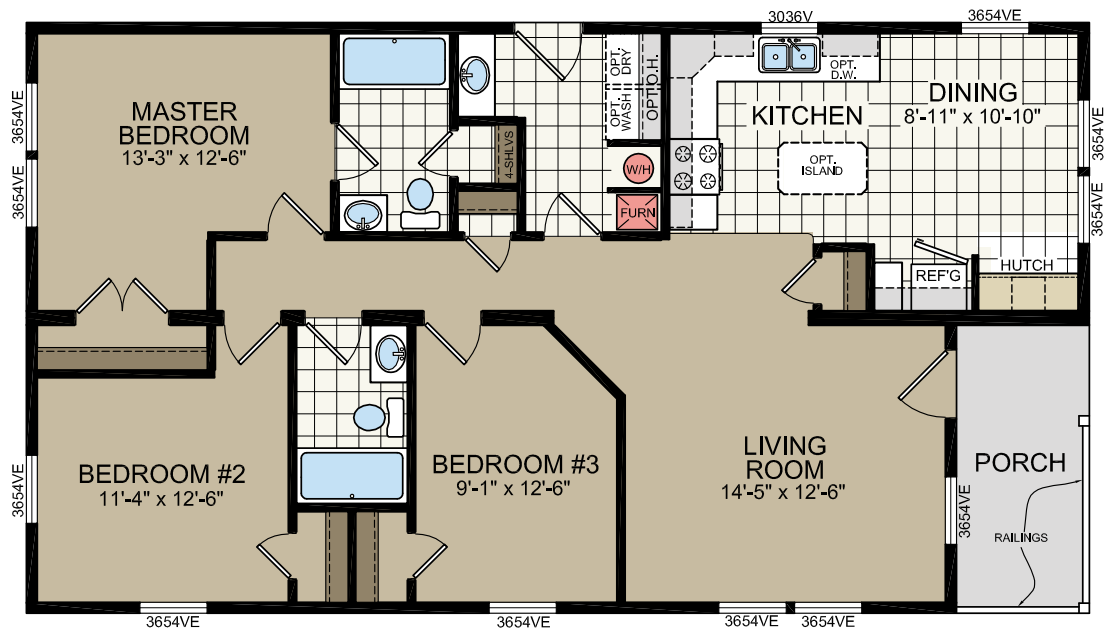
648

26'-8" x 48'
3 bed-2 bath
1280 sq. ft.



650

26'-8" x 48'
3 bed-2 bath
1280 sq. ft.

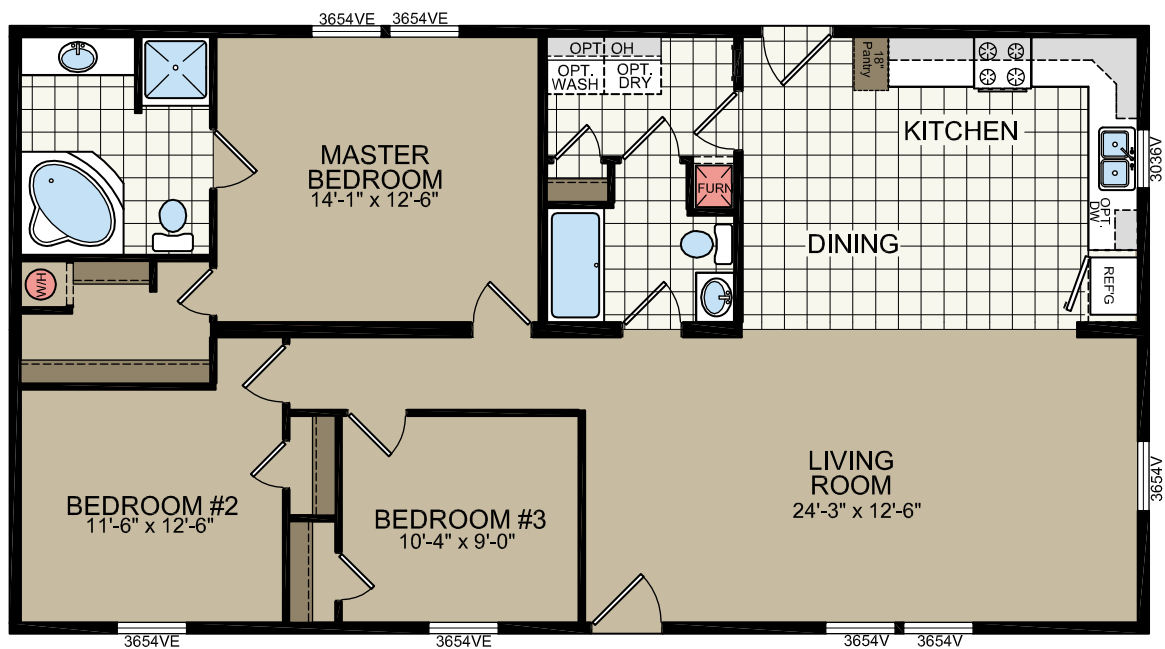


560

26'-8" x 50'
3 bed-2 bath
1333 sq. ft.

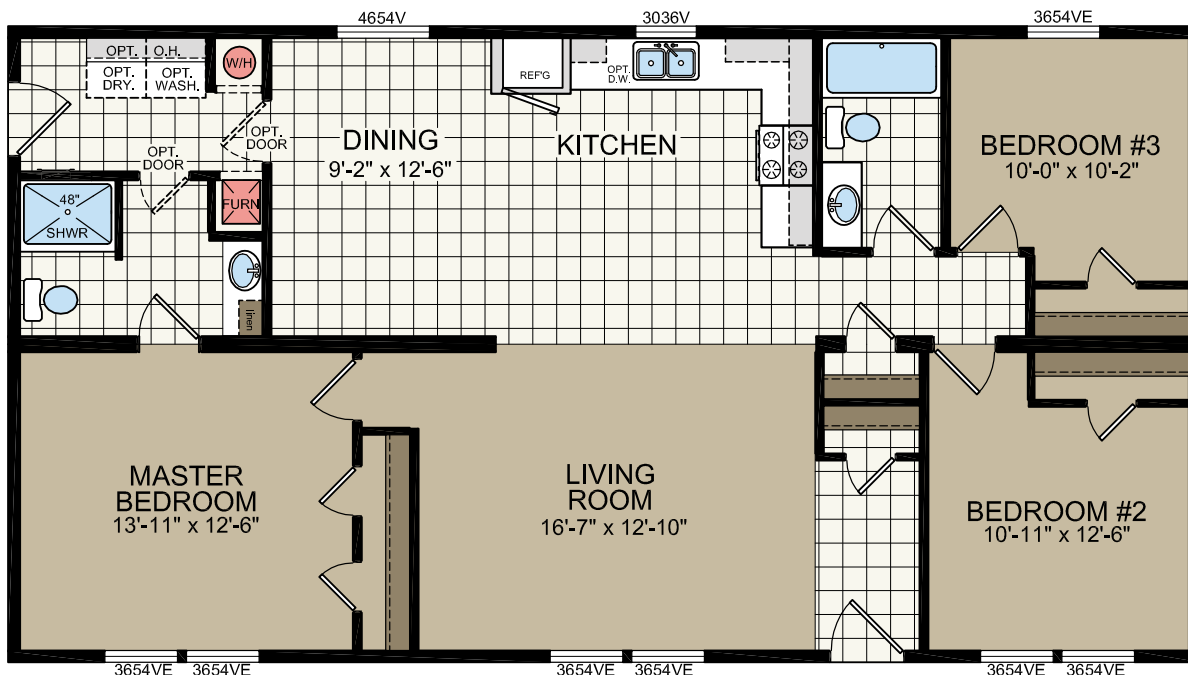
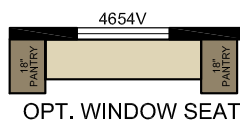


Shown with optional elevation



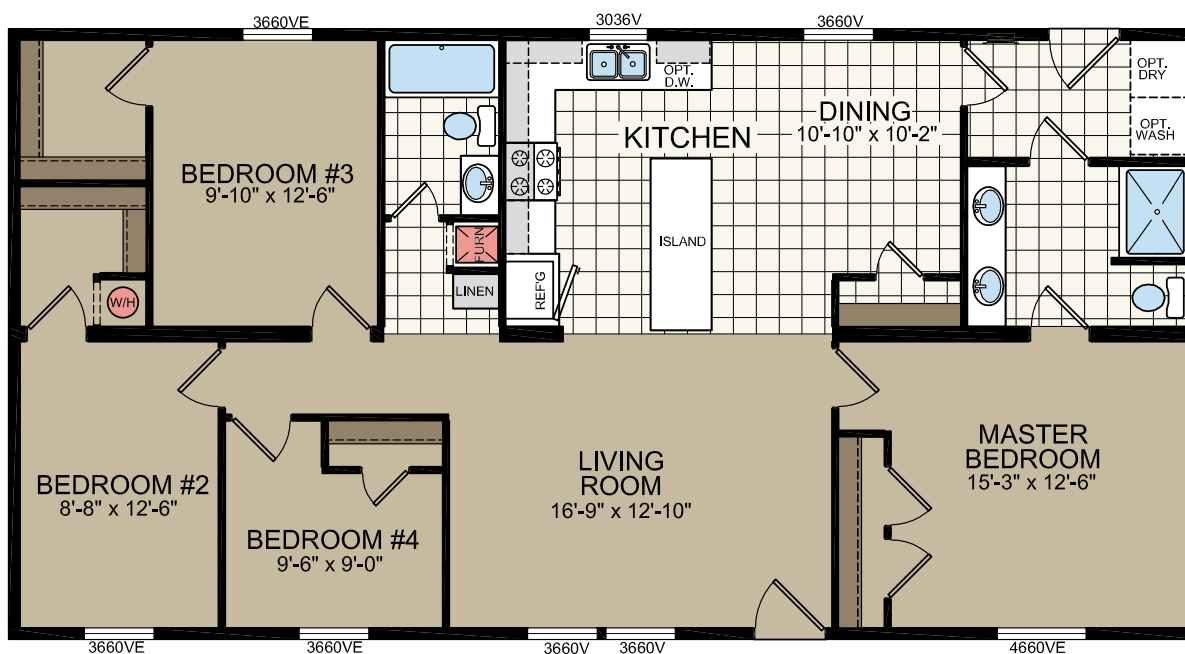
633

26'-8" x 50'
3 bed-2 bath
1333 sq. ft.



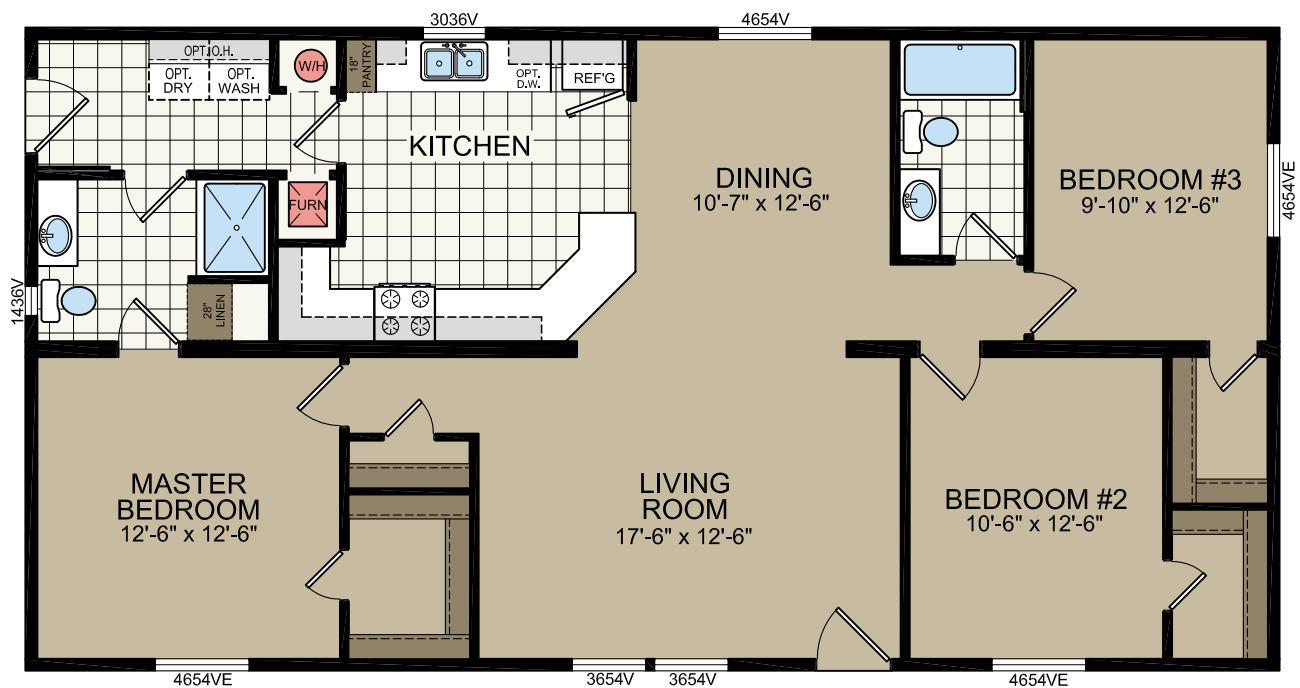
653

26'-8" x 52'
4 bed-2 bath
1387 sq. ft.



328

26'-8" x 52'
3 bed-2 bath
1387 sq. ft.

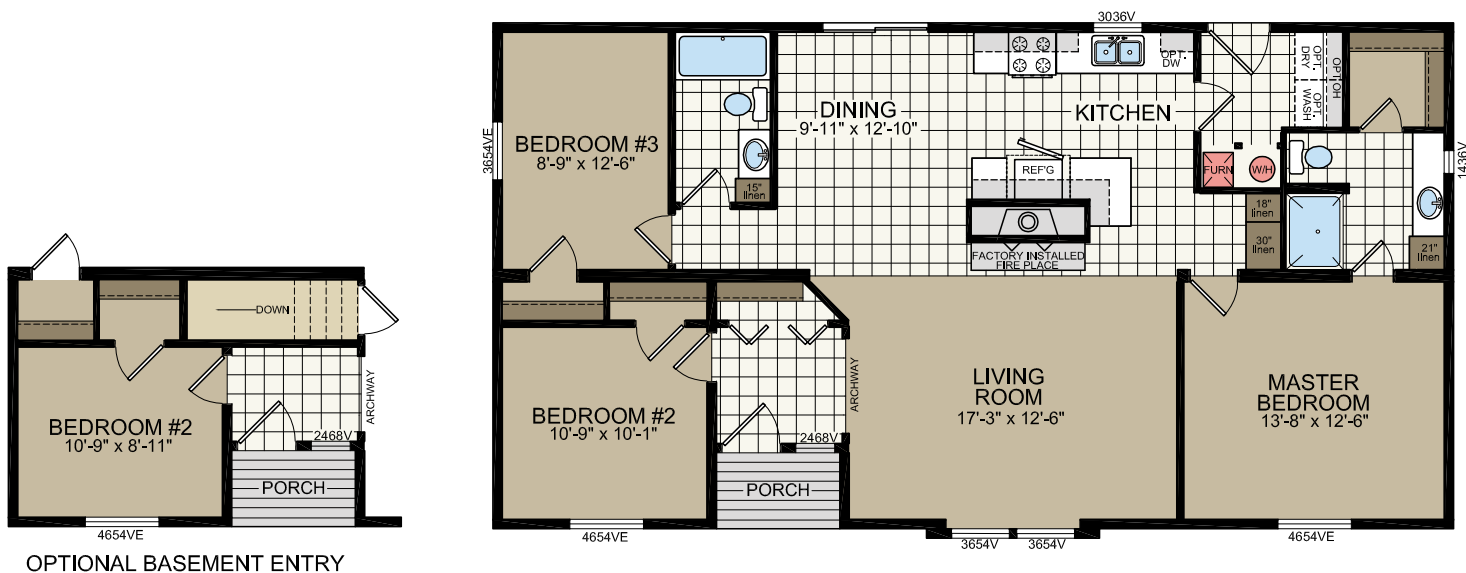


604

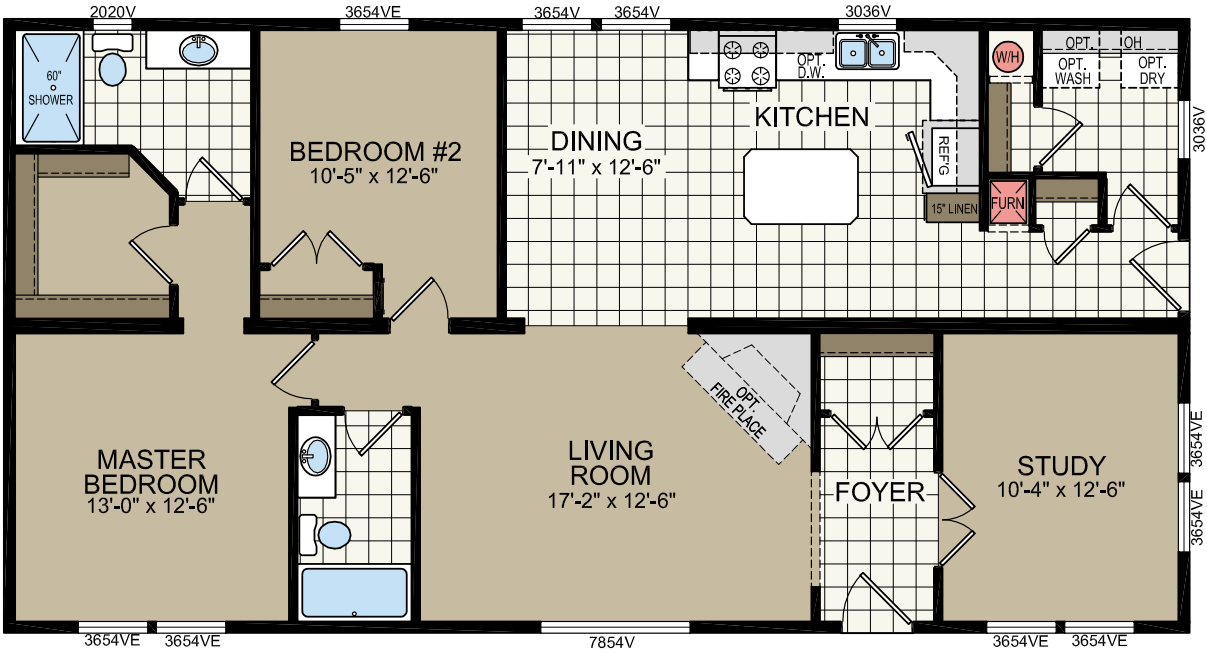
26'-8" x 50'-8"
3 bed-2 bath
1351 sq. ft.



Shown with optional dormer



655 | 26'-8" x 52'
2 bed-2 bath
1387 sq. ft.

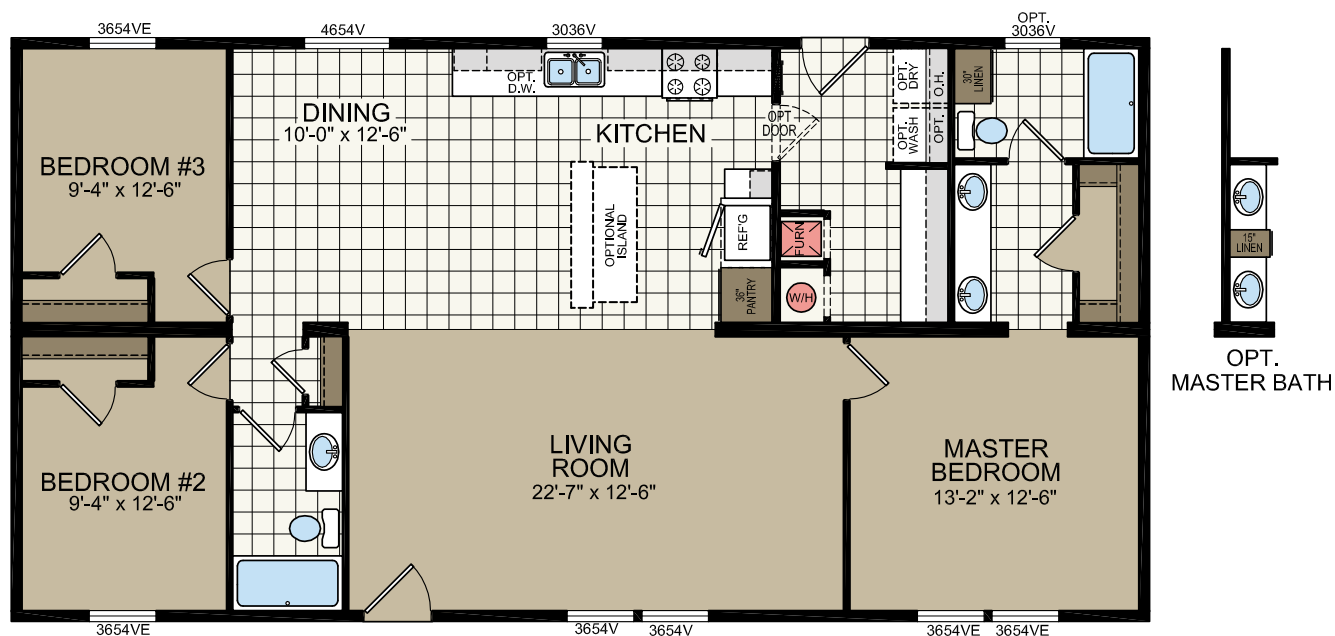


663

26'-8" x 52'
3 bed-2 bath
1387 sq. ft.

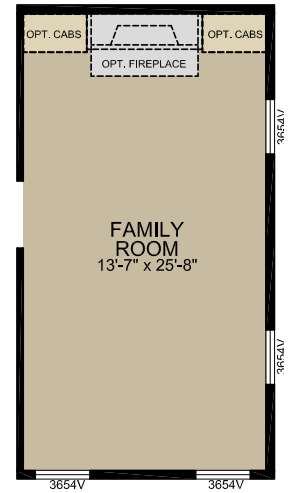
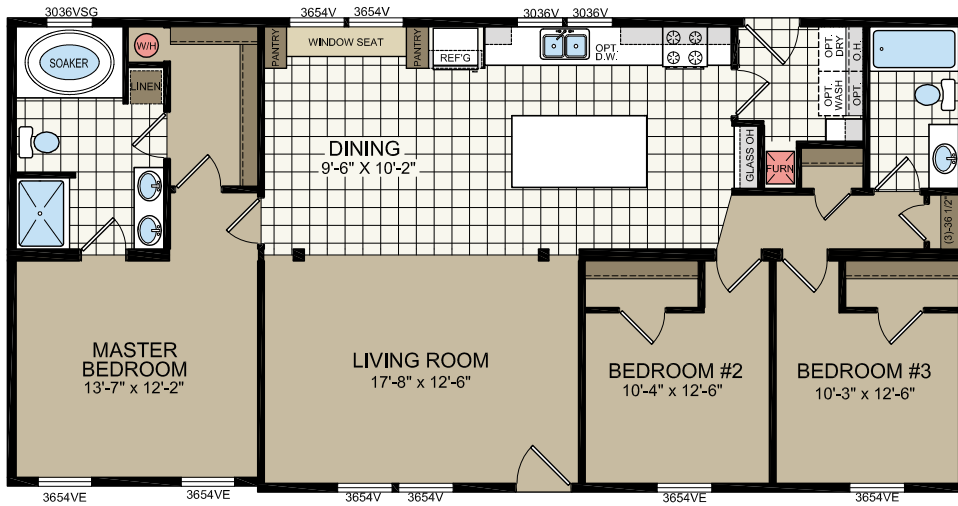
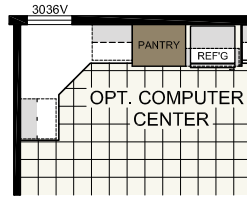


Shown with optional site-built porch



717

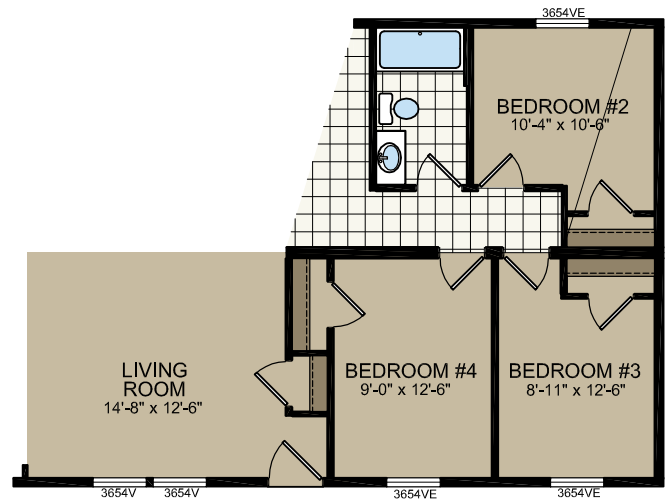
26'-8" x 54'
3 bed-2 bath
1440 sq. ft.



OPT. FAMILY ROOM

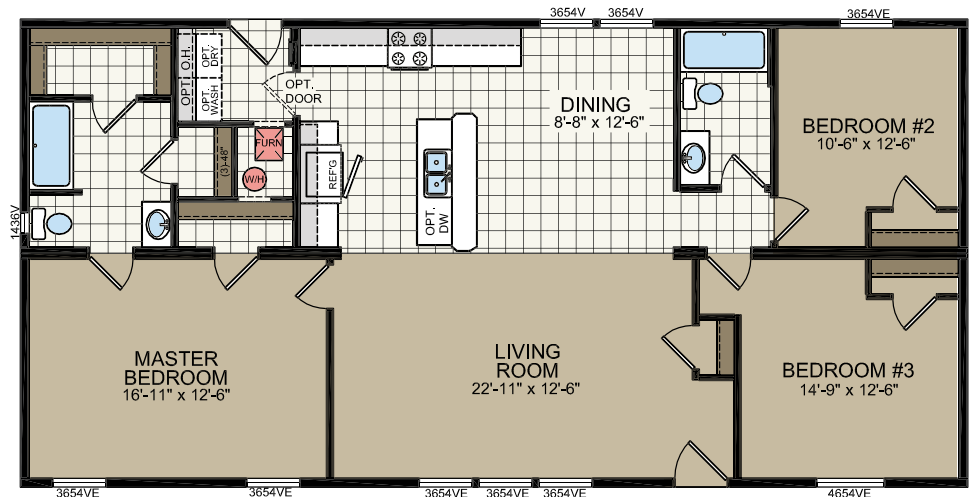
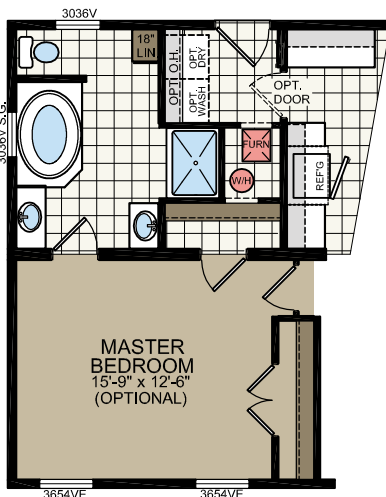
728

26'-8" x 54'
3 bed-2 bath
1440 sq. ft.



OPTIONAL 4th BEDROOM

OPTIONAL MASTER BATH

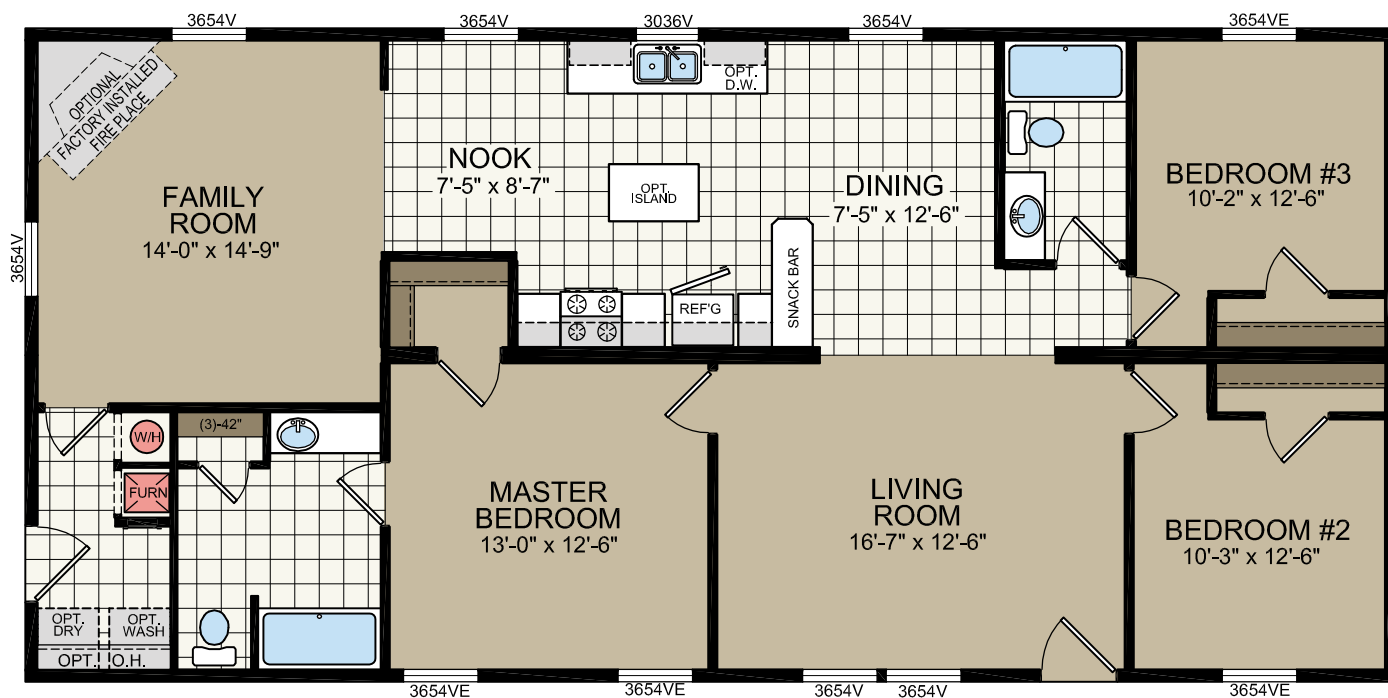


749

26'-8" x 56'
3 bed-2 bath
1494 sq. ft.

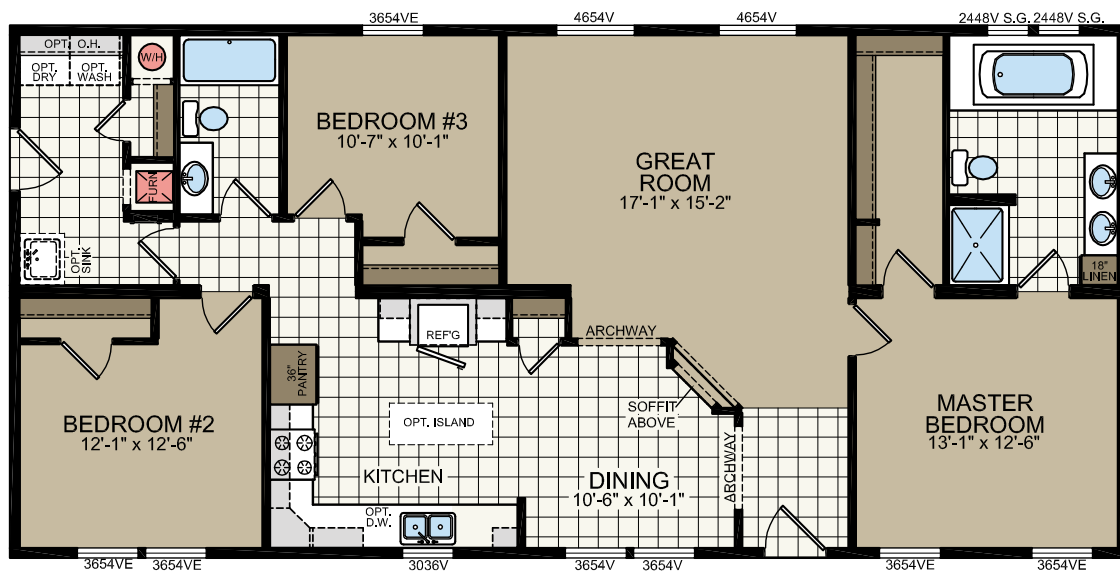


Shown with optional dormer



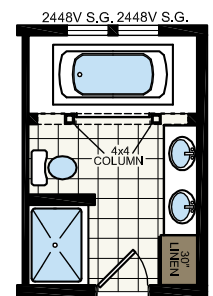
753

26'-8" x 56'
3 bed-2 bath
1494 sq. ft.

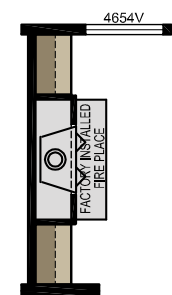


6236V **3654VE** **3654VE** **3654VE** **3654VE**

OPT. PICTURE WINDOW OVER KITCHEN SINK **OPT. BUMP OUT WINDOWS**



OPTIONAL GREEK BATH



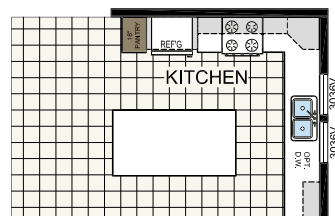
OPT. FIREPLACE

746

26'-8" x 56'
3 bed-2 bath
1494 sq. ft.

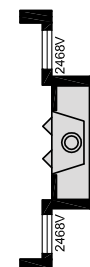
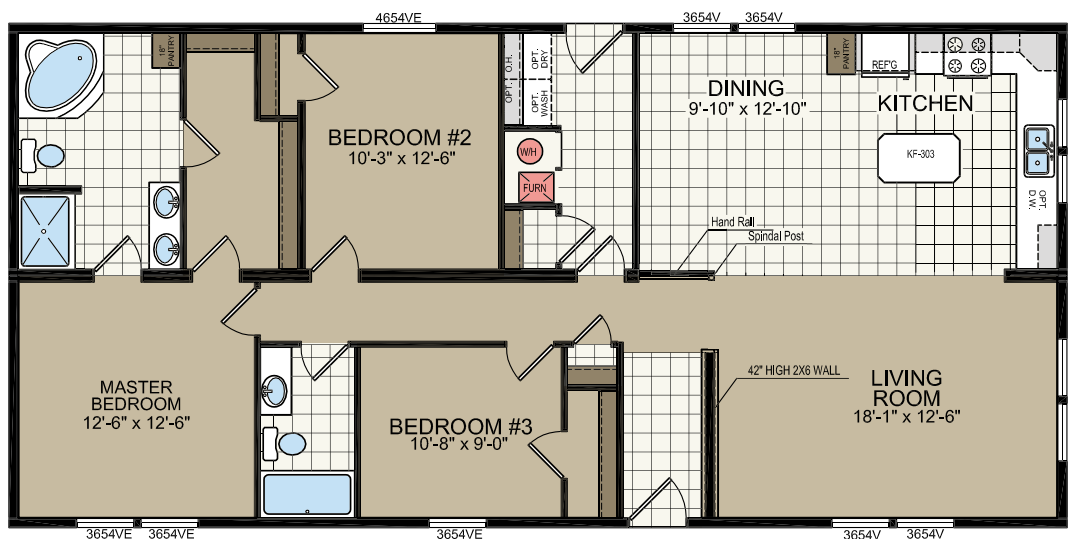
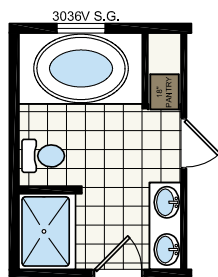


Shown with optional dormer



STD. KITCHEN
SHOWN W/ OPTIONAL KF-318

OPTIONAL MSTR. BATH



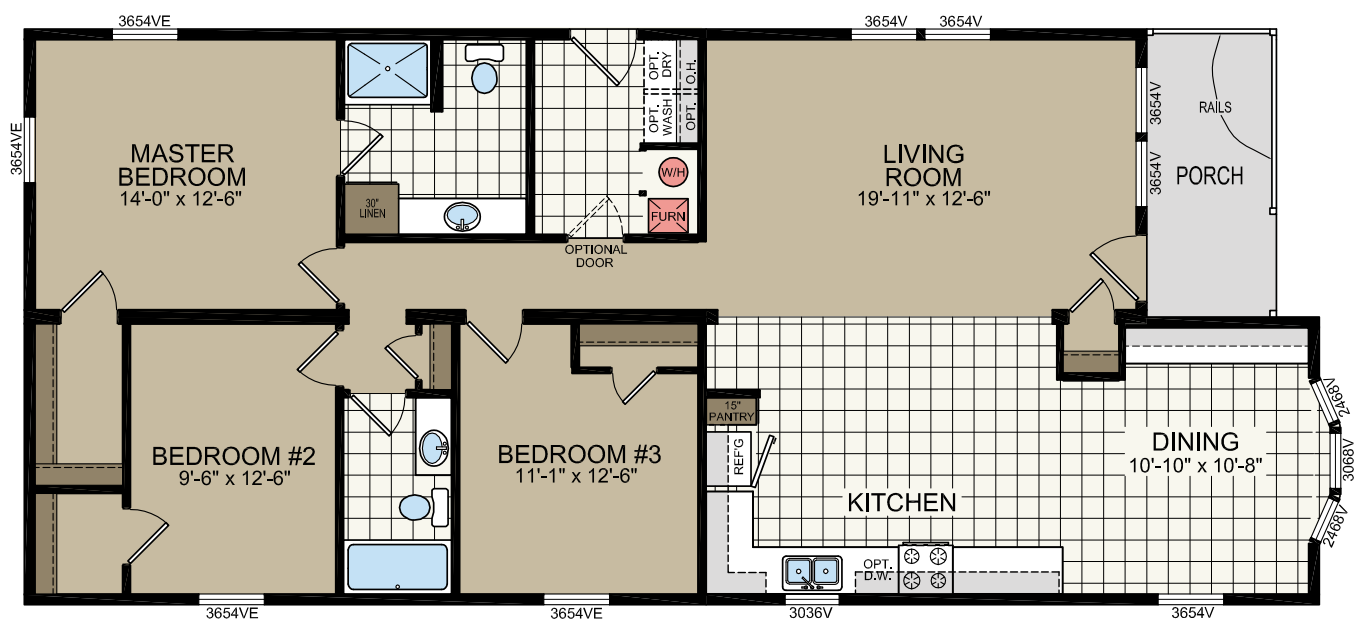
FIREPLACE OPTION

761

26'-8" x 58'/60'
3 bed-2 bath
1579 sq. ft.

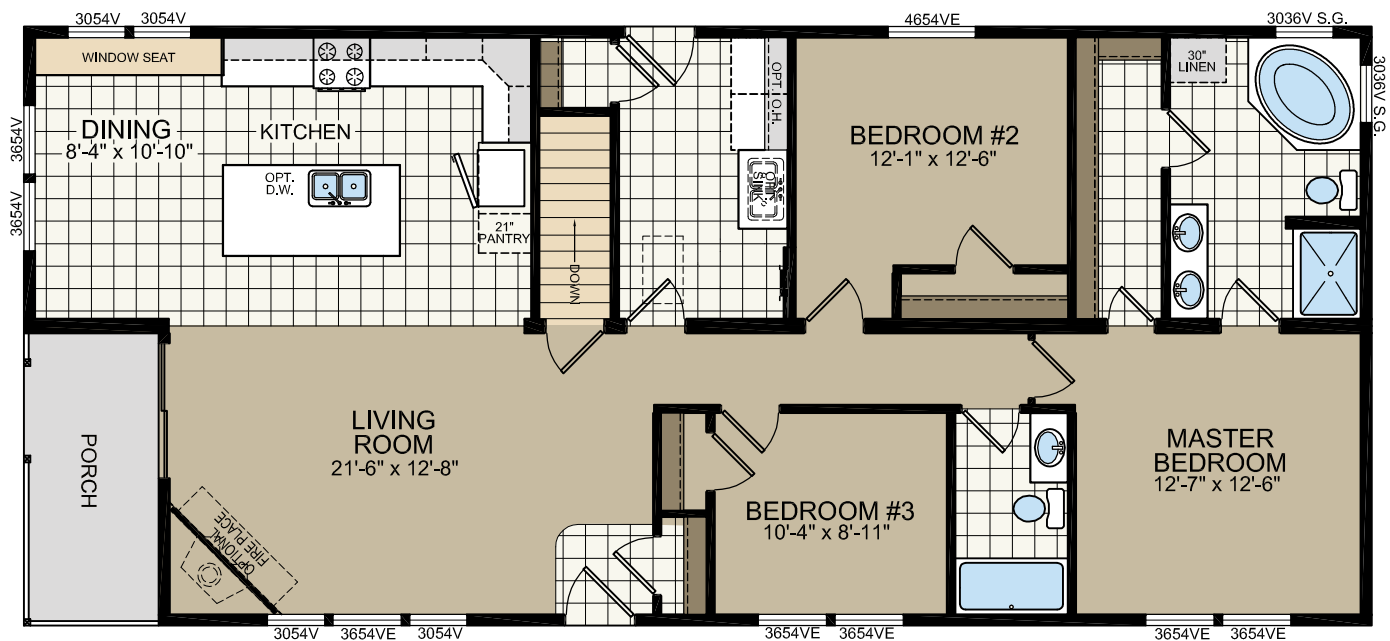


Shown with garage built on-site by others



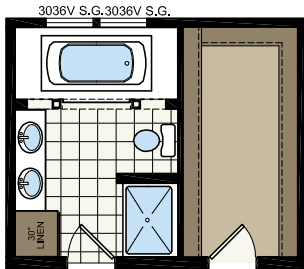
755

26'-9.5" x 60'
3 bed-2 bath
1600 sq. ft.

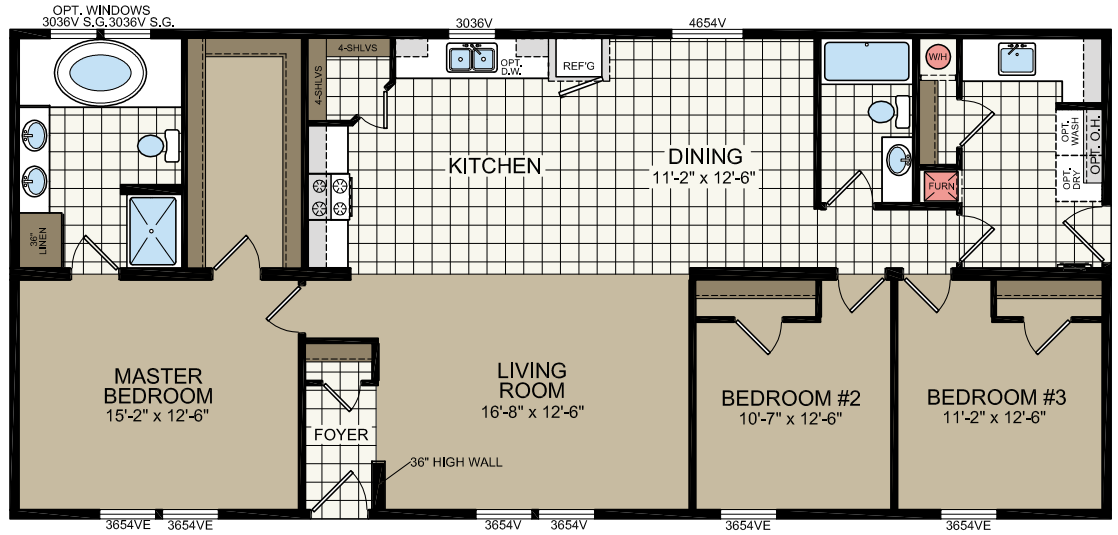


757

26'-8" x 60'
3 bed-2 bath
1600 sq. ft.

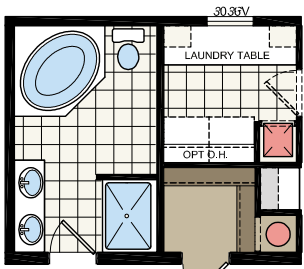


OPT. MSTR. BATH

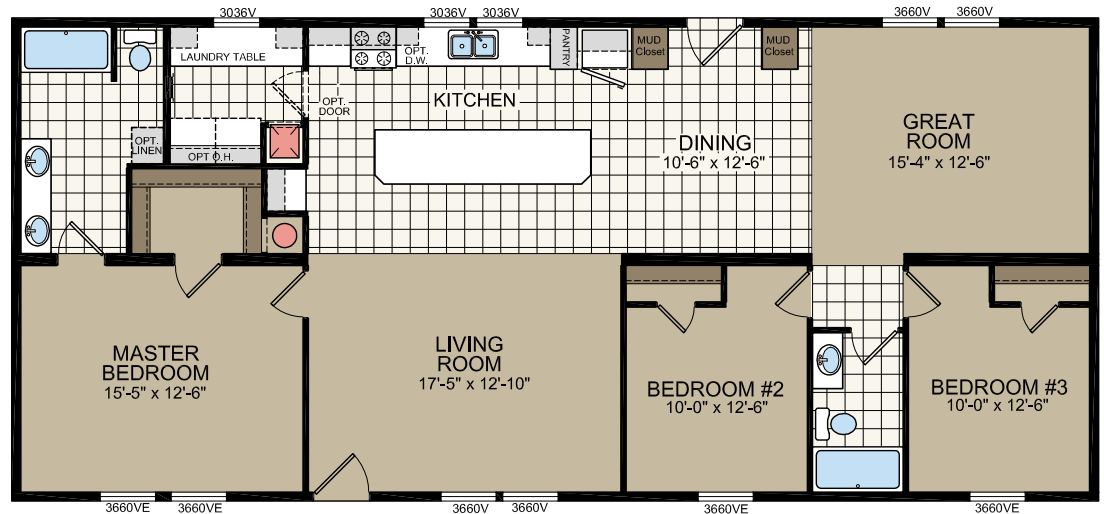


751

26'-8" x 60'
3 bed-2 bath
1600 sq. ft.



OPT MSTR BATH

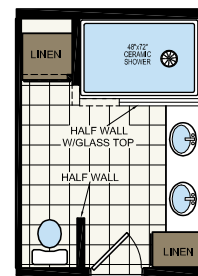


762

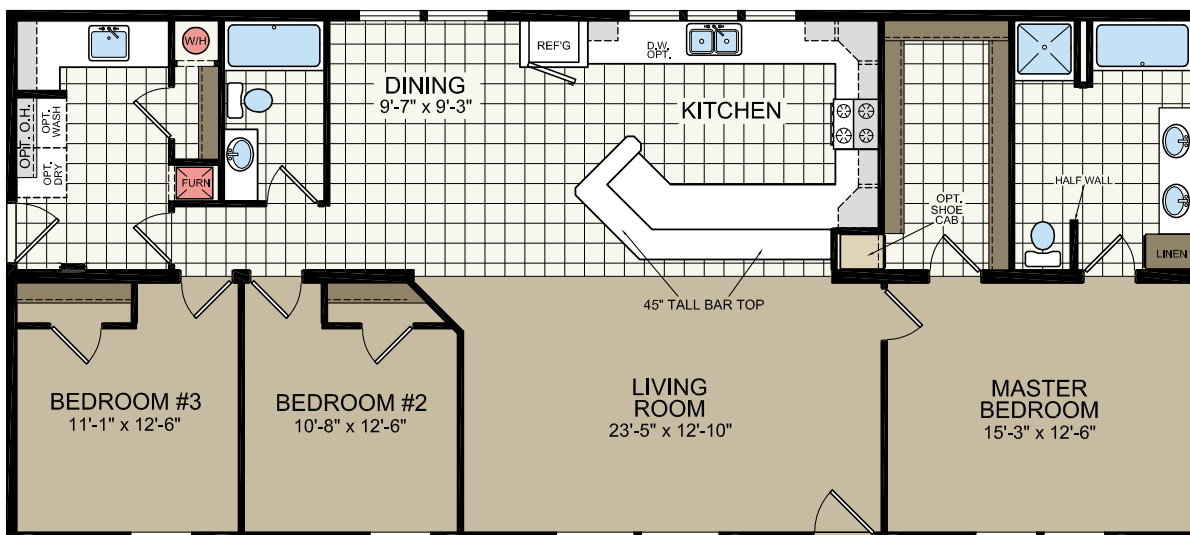
26'-8" x 60'
3 bed-2 bath
1600 sq. ft.



*shown with optional exterior elevation



OPT. MASTER BATHROOM





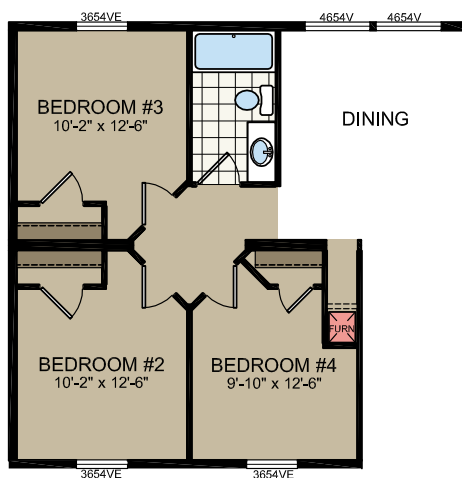
26'-8" x 62'
3 bed-2 bath
1654 sq. ft.



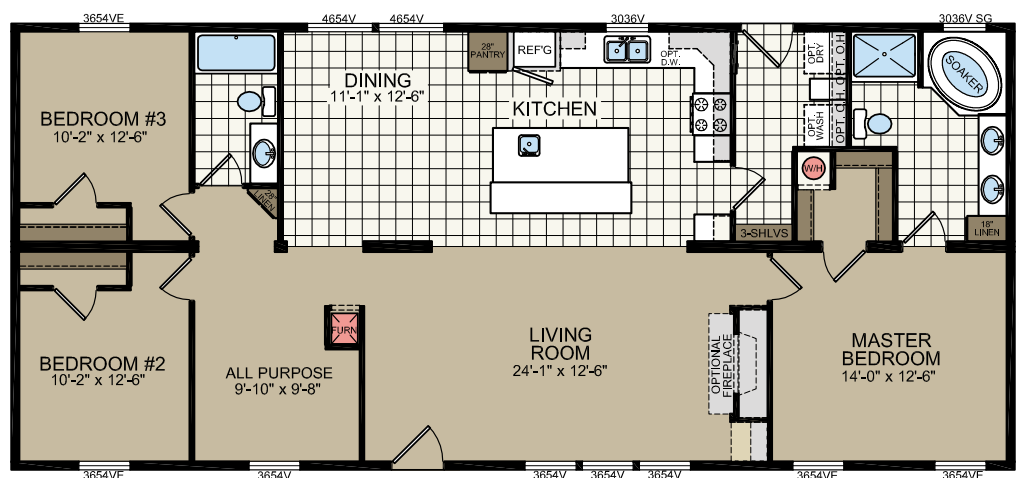


809

26'-8" x 60'
3 bed-2 bath
1600 sq. ft.

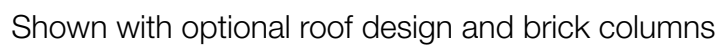


OPTIONAL 4TH BEDROOM LAYOUT



CENTER IN ROOM
OPT. BUMPOUT WINDOWS

26'-8" x 62'
3 bed-2 bath
1654 sq. ft.



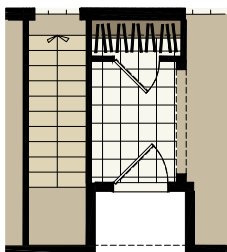
798

26'-8" x 62'
3 bed-2 bath
1654 sq. ft.

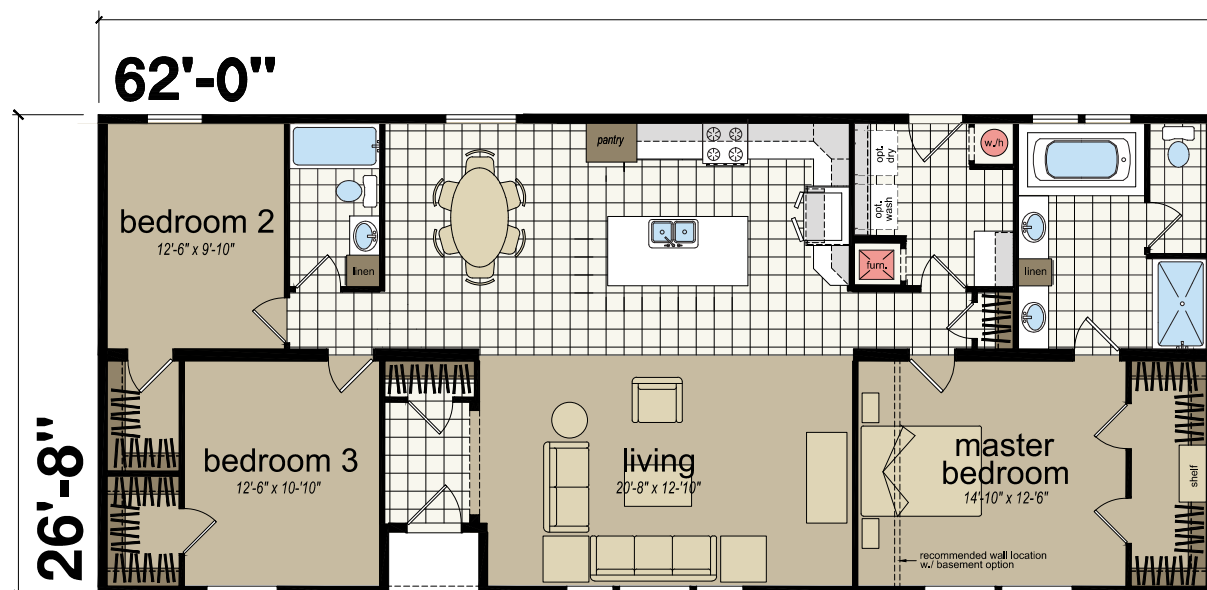
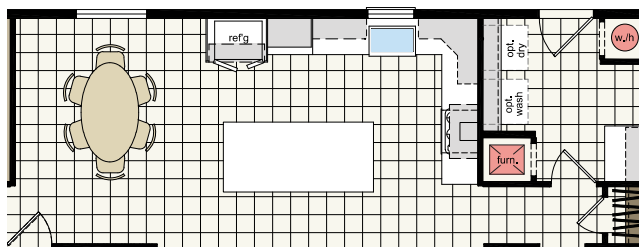


*shown with optional exterior elevation

basement option



ultimate kitchen two option





Standard Features Wellington Manor

Kitchen

- 3" Laminate Backsplash
- Raised Panel MDF Cabinets
- Raised Panel MDF Cabinet Doors
- Raised Panel Hardwood Cabinet Doors (Optional)
- MDF Cabinet Stiles
- Solid Oak Stiles (Optional)
- Hidden Cabinet Hinges
- Pewter Cabinet Pulls
- Adjustable Shelving in Overhead
- Drawer Over Door Base Cabinets
- Deep Stainless Steel Sink
- Whirlpool® 30" Gas Range
- Whirlpool® 18 Cu. Ft. FF Refrigerator
- Bottom Cabinet Molding (Optional)
- Crescent Edge Kitchen Counters (Optional)
- Center Shelf in Base Cabinet

Bathroom

- 60" Fiberglass Tubs
- 36" Fiberglass Shower (Per Plan)
- Shower Door (Per Plan)
- Vent Fan
- Porcelain Commodes with Shut-Offs
- China Sinks
- Tub Drape
- Fiberglass Soaker Tub (Per Plan)
- Huntington Brass® (Anti-Scald)
- Elongated Porcelain Commodes (Optional)
- Mirrored Cosmetics Box (Optional)
- Mirror & Light All Vanities

Electrical, Heating & Plumbing

- Pex Water Lines
- High Efficiency Furnace (required with A277)
- Louvered Furnace Door (Optional)
- Dual-Controlled Thermostat
- 40-Gallon Electric Water Heater
- Whole House Vent Fan
- Plumb for Washer
- Wire & Vent for Dryer
- Exterior GFI Receptacles
- Carbon Monoxide Detectors
- GFCI Protected Outlets Per Code
- Switch to Light All Walk-In Closets
- Double Bulb Ceiling Lights
- Smoke Detector
- 125 Amp Electric Service
- All Copper Wiring
- Water Shut-Offs Throughout & Main
- Perimeter Heat Ducts

Interior Finishes

- Deluxe Chandelier (Optional)
- Vinyl Flooring at Entry (Optional)
- 25 Ounce Carpet
- 1/2" Rebond Carpet Pad
- 6-Panel Interior Doors (White)
- Pewter Door Knobs
- Lever Locks (Optional)
- Mini Blinds and Valances
- 2 3/4" Residential Base & Crown Molding (Optional)
- 3 5/8" Crown Molding (White - Optional)
- 3 1/2" Base Molding (White - Optional)
- Wire Vented Shelves in All Closets
- Washer and Dryer Shelf (Optional)

Construction

- 4" Recessed Frame
- Double 4.5 Vinyl Siding
- 7/16" OSB Sheathing
- 7'6" Sidewall
- 40 lb Snow Load
- 12" Vinyl Shutters (Front Door Sidewall)
- 12" Gable End Eaves
- 6" Sidewall Eaves
- Perimeter Heat Registers
- Low E Vinyl Windows - Argon
- Roof Insulation (Blown Fiberglass)
- Floor Insulation (Fiberglass)
- 2 x 6 Exterior Walls
- 2 x 8 Floor Joist (Per Model)
- 2 x 10 Floor Joist (Per Model)
- 2 x 4 Double Marriage Line
- Vaulted Ceilings Throughout
- 1/2" Ceiling Drywall
- 5/12 Roof with 8' Ceilings (Optional)
- Ceiling Finish (Stippled)
- 1/2" VOG Wallboards
- 1/2" Primed Drywall (Optional)
- 36 x 80 Fiberglass Front & Rear Doors
- Light at All Exterior Doors
- 7/16 OSB Marriage Line (Optional)
- Architectural Shingles
- 7/16" OSB Roof Decking
- Ice Guard (Optional)
- Housewrap
- Double LVL Rim Joist at Marriage Line

Standard Features Collingwood

Kitchen

- 3" Laminate Backsplash
- Raised Panel Hardwood Cabinet Doors
- Solid Oak Stiles
- Hidden Cabinet Hinges
- Pewter Cabinet Pulls
- Adjustable Shelving in Overhead
- Drawer Over Door Base Cabinets
- Deep Stainless Steel Sink
- Whirlpool® 30" Gas Range (Optional)
- Whirlpool® 18 Cu. Ft. FF Refrigerator (Optional)
- Bottom Cabinet Molding
- Crescent Edge Kitchen Counters
- Center Shelf in Base Cabinet

Bathroom

- 60" Fiberglass Tubs
- 36" Fiberglass Shower (Per Plan)
- Shower Door (Per Plan)
- Vent Fan
- Porcelain Commodes with Shut-Offs
- China Sinks
- Tub Drape (Optional)
- Fiberglass Soaker Tub (Per Plan)
- Huntington Brass® (Anti-Scald)
- Elongated Porcelain Commodes
- Mirrored Cosmetics Box
- Mirror & Light All Vanities

Electrical, Heating & Plumbing

- Pex Water Lines (Stubbed)
- Stub Water & Sewer Lines
- High Efficiency Furnace (Optional)
- Louvered Furnace Door (Optional)
- Dual-Controlled Thermostat (Programmable)
- 40-Gallon Electric Water Heater (Optional)
- Whole House Vent Fan (Optional - HRV)
- Plumb for Washer
- Wire for Dryer
- Exterior GFI Receptacles
- Carbon Monoxide Detectors
- GFCI Protected Outlets Per Code
- Switch to Light All Walk-In Closets
- Double Bulb Ceiling Lights
- Smoke Detector
- 200 Amp Electric Service
- All Copper Wiring
- Water Shut-Offs Throughout & Main
- Perimeter Heat Ducts (Stubbed with Boots)

Interior Finishes

- Deluxe Chandelier
- Vinyl Flooring at Entry
- 25 Ounce Carpet
- 1/2" Rebond Carpet Pad
- 6-Panel Interior Doors (White)
- Pewter Door Knobs
- Lever Locks
- Mini Blinds and Valances (Deluxe Drapery Package Option)
- 3 5/8" Crown Molding (White)
- 3 1/2" Base Molding (White)
- Wire Vented Shelves in All Closets
- Washer and Dryer Shelf

Construction

- Double 4.5 Vinyl Siding
- 7/16" OSB Sheathing
- 8' Sidewall
- 60 lb Snow Load
- 12" Vinyl Shutters (Front Door Sidewall)
- 12" Gable End Eaves
- 6" Sidewall Eaves
- Perimeter Heat Registers
- Low E Vinyl Windows - Argon
- Roof Insulation (Blown Fiberglass)
- Floor Insulation (Optional)
- 2 x 6 Exterior Walls
- 2 x 10 Floor Joist
- 2 x 4 Double Marriage Line
- 8' Flat Ceilings Throughout
- 1/2" Ceiling Drywall
- 5/12 Roof with 8' Ceilings
- Ceiling Finish (Smooth)
- 1/2" Primed Drywall
- 36 x 80 Fiberglass Front & Rear Doors
- Light at All Exterior Doors
- 7/16 OSB Marriage Line
- Architectural Shingles
- Ice Guard
- Housewrap
- Double LVL Rim Joist at Marriage Line

Make yourself at home with Titan Homes

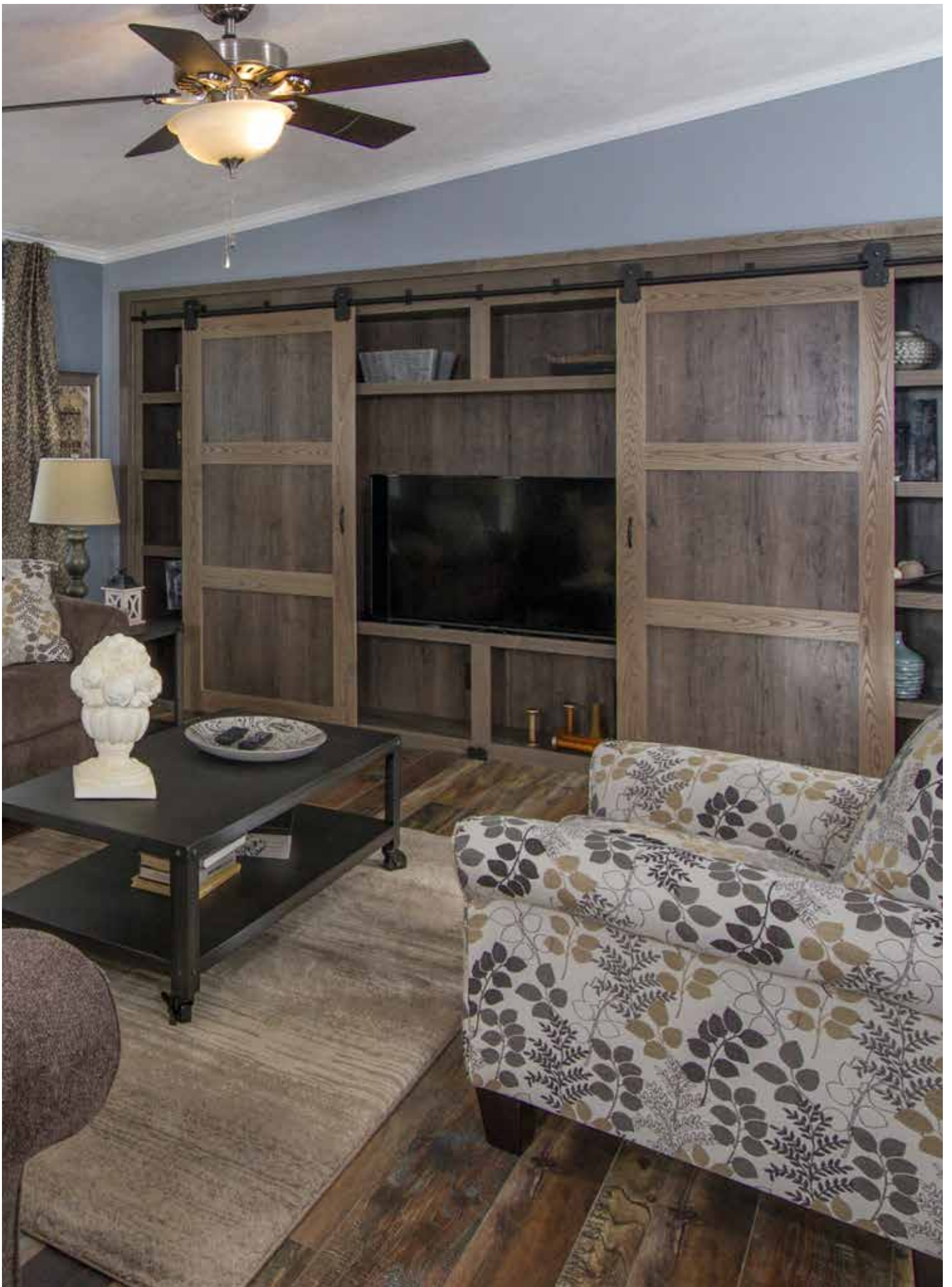


Building the best

At Titan, we build each and every home to meet or exceed a strict national or state building code, and we set even higher standards for ourselves. We focus on the things you see—and those you don't. We monitor and inspect our homes at every stage of construction. From the plumbing system to the electrical system, to the kitchen cabinets, to the closets in the bedrooms, every home we build undergoes rigorous quality inspections to ensure we're providing you our best.

DISCLAIMER:

Due to continuous product development and improvement, prices, specifications, and materials are subject to change without notice or obligation. Square footage and other dimensions are approximate. Included images are artist renderings and are not intended to be an accurate representation of the home. Renderings and floorplans may be shown with optional features or third-party additions.





Titan Homes
951 Route 12 South
Sangerfield, NY 13455

titanhomesny.com

CHAMPION®

MANUFACTURED BEAUTIFULLY™

10151000