

Building Notes:
 - All materials are C and B Custom Modular's standards unless otherwise specified.
 - All door adjustments are on site by others.
 - C and B Custom Modular Inc. is not responsible for local codes or permits.
 - Construction type trailer

Building Notes:
 - All materials are C and B Custom Modular's standards unless otherwise specified.
 - All door adjustments are on site by others.
 - C and B Custom Modular Inc. is not responsible for local codes or permits.
 - Construction type trailer

Building Notes:
 - All materials are C and B Custom Modular's standards unless otherwise specified.
 - All door adjustments are on site by others.
 - C and B Custom Modular Inc. is not responsible for local codes or permits.
 - Construction type trailer

Building Notes:
 - All materials are C and B Custom Modular's standards unless otherwise specified.
 - All door adjustments are on site by others.
 - C and B Custom Modular Inc. is not responsible for local codes or permits.
 - Construction type trailer

Building Notes:
 - All materials are C and B Custom Modular's standards unless otherwise specified.
 - All door adjustments are on site by others.
 - C and B Custom Modular Inc. is not responsible for local codes or permits.
 - Construction type trailer

Building Notes:
 - All materials are C and B Custom Modular's standards unless otherwise specified.
 - All door adjustments are on site by others.
 - C and B Custom Modular Inc. is not responsible for local codes or permits.
 - Construction type trailer

Building Notes:
 - All materials are C and B Custom Modular's standards unless otherwise specified.
 - All door adjustments are on site by others.
 - C and B Custom Modular Inc. is not responsible for local codes or permits.
 - Construction type trailer

Building Notes:
 - All materials are C and B Custom Modular's standards unless otherwise specified.
 - All door adjustments are on site by others.
 - C and B Custom Modular Inc. is not responsible for local codes or permits.
 - Construction type trailer

Building Notes:
 - All materials are C and B Custom Modular's standards unless otherwise specified.
 - All door adjustments are on site by others.
 - C and B Custom Modular Inc. is not responsible for local codes or permits.
 - Construction type trailer

Building Notes:
 - All materials are C and B Custom Modular's standards unless otherwise specified.
 - All door adjustments are on site by others.
 - C and B Custom Modular Inc. is not responsible for local codes or permits.
 - Construction type trailer

Building Notes:
 - All materials are C and B Custom Modular's standards unless otherwise specified.
 - All door adjustments are on site by others.
 - C and B Custom Modular Inc. is not responsible for local codes or permits.
 - Construction type trailer

Building Notes:
 - All materials are C and B Custom Modular's standards unless otherwise specified.
 - All door adjustments are on site by others.
 - C and B Custom Modular Inc. is not responsible for local codes or permits.
 - Construction type trailer

Building Notes:
 - All materials are C and B Custom Modular's standards unless otherwise specified.
 - All door adjustments are on site by others.
 - C and B Custom Modular Inc. is not responsible for local codes or permits.
 - Construction type trailer

Building Notes:
 - All materials are C and B Custom Modular's standards unless otherwise specified.
 - All door adjustments are on site by others.
 - C and B Custom Modular Inc. is not responsible for local codes or permits.
 - Construction type trailer

Building Notes:
 - All materials are C and B Custom Modular's standards unless otherwise specified.
 - All door adjustments are on site by others.
 - C and B Custom Modular Inc. is not responsible for local codes or permits.
 - Construction type trailer

Building Notes:
 - All materials are C and B Custom Modular's standards unless otherwise specified.
 - All door adjustments are on site by others.
 - C and B Custom Modular Inc. is not responsible for local codes or permits.
 - Construction type trailer

Building Notes:
 - All materials are C and B Custom Modular's standards unless otherwise specified.
 - All door adjustments are on site by others.
 - C and B Custom Modular Inc. is not responsible for local codes or permits.
 - Construction type trailer

Building Notes:
 - All materials are C and B Custom Modular's standards unless otherwise specified.
 - All door adjustments are on site by others.
 - C and B Custom Modular Inc. is not responsible for local codes or permits.
 - Construction type trailer

Building Notes:
 - All materials are C and B Custom Modular's standards unless otherwise specified.
 - All door adjustments are on site by others.
 - C and B Custom Modular Inc. is not responsible for local codes or permits.
 - Construction type trailer

Building Notes:
 - All materials are C and B Custom Modular's standards unless otherwise specified.
 - All door adjustments are on site by others.
 - C and B Custom Modular Inc. is not responsible for local codes or permits.
 - Construction type trailer

Building Notes:
 - All materials are C and B Custom Modular's standards unless otherwise specified.
 - All door adjustments are on site by others.
 - C and B Custom Modular Inc. is not responsible for local codes or permits.
 - Construction type trailer

Building Notes:
 - All materials are C and B Custom Modular's standards unless otherwise specified.
 - All door adjustments are on site by others.
 - C and B Custom Modular Inc. is not responsible for local codes or permits.
 - Construction type trailer

Building Notes:
 - All materials are C and B Custom Modular's standards unless otherwise specified.
 - All door adjustments are on site by others.
 - C and B Custom Modular Inc. is not responsible for local codes or permits.
 - Construction type trailer

Building Notes:
 - All materials are C and B Custom Modular's standards unless otherwise specified.
 - All door adjustments are on site by others.
 - C and B Custom Modular Inc. is not responsible for local codes or permits.
 - Construction type trailer

Building Notes:
 - All materials are C and B Custom Modular's standards unless otherwise specified.
 - All door adjustments are on site by others.
 - C and B Custom Modular Inc. is not responsible for local codes or permits.
 - Construction type trailer

Building Notes:
 - All materials are C and B Custom Modular's standards unless otherwise specified.
 - All door adjustments are on site by others.
 - C and B Custom Modular Inc. is not responsible for local codes or permits.
 - Construction type trailer

Building Notes:
 - All materials are C and B Custom Modular's standards unless otherwise specified.
 - All door adjustments are on site by others.
 - C and B Custom Modular Inc. is not responsible for local codes or permits.
 - Construction type trailer

Building Notes:
 - All materials are C and B Custom Modular's standards unless otherwise specified.
 - All door adjustments are on site by others.
 - C and B Custom Modular Inc. is not responsible for local codes or permits.
 - Construction type trailer

Building Notes:
 - All materials are C and B Custom Modular's standards unless otherwise specified.
 - All door adjustments are on site by others.
 - C and B Custom Modular Inc. is not responsible for local codes or permits.
 - Construction type trailer

Building Notes:
 - All materials are C and B Custom Modular's standards unless otherwise specified.
 - All door adjustments are on site by others.
 - C and B Custom Modular Inc. is not responsible for local codes or permits.
 - Construction type trailer

Building Notes:
 - All materials are C and B Custom Modular's standards unless otherwise specified.
 - All door adjustments are on site by others.
 - C and B Custom Modular Inc. is not responsible for local codes or permits.
 - Construction type trailer

Building Notes:
 - All materials are C and B Custom Modular's standards unless otherwise specified.
 - All door adjustments are on site by others.
 - C and B Custom Modular Inc. is not responsible for local codes or permits.
 - Construction type trailer

Building Notes:
 - All materials are C and B Custom Modular's standards unless otherwise specified.
 - All door adjustments are on site by others.
 - C and B Custom Modular Inc. is not responsible for local codes or permits.
 - Construction type trailer

Building Notes:
 - All materials are C and B Custom Modular's standards unless otherwise specified.
 - All door adjustments are on site by others.
 - C and B Custom Modular Inc. is not responsible for local codes or permits.
 - Construction type trailer

Building Notes:
 - All materials are C and B Custom Modular's standards unless otherwise specified.
 - All door adjustments are on site by others.
 - C and B Custom Modular Inc. is not responsible for local codes or permits.
 - Construction type trailer

Building Notes:
 - All materials are C and B Custom Modular's standards unless otherwise specified.
 - All door adjustments are on site by others.
 - C and B Custom Modular Inc. is not responsible for local codes or permits.
 - Construction type trailer

Building Notes:
 - All materials are C and B Custom Modular's standards unless otherwise specified.
 - All door adjustments are on site by others.
 - C and B Custom Modular Inc. is not responsible for local codes or permits.
 - Construction type trailer

Building Notes:
 - All materials are C and B Custom Modular's standards unless otherwise specified.
 - All door adjustments are on site by others.
 - C and B Custom Modular Inc. is not responsible for local codes or permits.
 - Construction type trailer

Building Notes:
 - All materials are C and B Custom Modular's standards unless otherwise specified.
 - All door adjustments are on site by others.
 - C and B Custom Modular Inc. is not responsible for local codes or permits.
 - Construction type trailer

Building Notes:
 - All materials are C and B Custom Modular's standards unless otherwise specified.
 - All door adjustments are on site by others.
 - C and B Custom Modular Inc. is not responsible for local codes or permits.
 - Construction type trailer

Building Notes:
 - All materials are C and B Custom Modular's standards unless otherwise specified.
 - All door adjustments are on site by others.
 - C and B Custom Modular Inc. is not responsible for local codes or permits.
 - Construction type trailer

Building Notes:
 - All materials are C and B Custom Modular's standards unless otherwise specified.
 - All door adjustments are on site by others.
 - C and B Custom Modular Inc. is not responsible for local codes or permits.
 - Construction type trailer

Building Notes:
 - All materials are C and B Custom Modular's standards unless otherwise specified.
 - All door adjustments are on site by others.
 - C and B Custom Modular Inc. is not responsible for local codes or permits.
 - Construction type trailer

EXTERIOR DOORS

- 1 36X80 CURRIES 18 GA INS/STEEL DOOR W/18 GA KD STL JAMBS, 10X10 SAFETY GLAZED LITE, WEATHER STRIPPING (COLOR = TO BE DETERMINED)
- 1 H/C THRESHOLD
- 1 TELL CLOSER #12641BC PA AL
- 1 WEATHER LITE 260 KEYS ENTRY LEVER, GRADE 2
- 1 KEYS ALIKE
- 1 36X80 CURRIES 18 GA INS/STEEL DOOR W/18 GA KD STL JAMBS, 22X64 15 SAFETY GLAZED LITE, WEATHER STRIPPING (COLOR = TO BE DETERMINED)
- 1 H/C THRESHOLD
- 1 TELL CLOSER #12641BC PA AL
- 1 WEATHER LITE 260 KEYS ENTRY LEVER, GRADE 2
- 1 KEYS ALIKE

INTERIOR DOORS

- 2 36X80 PREFINISHED EMBOSSED HOLLOW CORE SNOW WHITE DOOR W/ BALL BEARING HINGES
- 2 WHITE PINE JAMBS
- 2 TELL PASSAGE #LC2475CTL 260 LEVER SET
- 2 FLOOR MOUNT DOOR STOP
- 2 HINGES
- 1 WHITE PINE JAMBS
- 1 TELL PRIVACY #LC2476CTL 260 LEVER SET
- 1 FLOOR MOUNT DOOR STOP

WINDOWS

- 5 WINTech 70 48X60 48X45 FIXED OVER 48X15 HORIZONTAL SLIDER W/DIG, WHITE VINYL FRAME AND BUG SCREEN (U= .50 SHCC= .65)
- 5 1" ALUMINUM WINDBLINDS FOR 48"x60" WINDOW
- 1 SCREW (MIN 3/8" LONG) BE PLUM RING
- 1 1" ALUMINUM WINDBLINDS FOR 30"x14" WINDOW (COLOR = TO BE DETERMINED)
- 1 WINDOWS WITH GRID PER PRINT

ELECTRICAL

- NOTE: ALL ELECTRICAL TO MEET CSA STANDARDS
- 120/240V SINGLE PHASE, 3 WIRE, 60HZ W/GROUND
- 1 CSA RECEPTS WITH MAIN 150AMP BREAKER C00140M150
- 1 CSA HEIGHT TO BE 36" TO BOTTOM
- 1 1/2" EMT CONDUIT STUB THRU SIDEWALL
- 1 MIN W/18" MIN. HANGERS TO BE PLUM RING
- 1 2" TB-TUBE FLOURESCENT W/DIFFUSER AND ELECTRONIC BALLAST W/ALUMINAIR DISCT.

EXTERIOR LIGHT

- 2 75W WEATHERPROOF EXTERIOR LIGHTS VRI
- 2 COMBO DUAL BULB FLOOD LIGHT & EXIT LIGHT W/BATT BACKUP #LPK70R0MDH CSA
- 1 BROWN 100 CFM EXHAUST FAN/LT COMBO # 696 W/13W FLOURESCENT BULB
- 1 CSA RECEPTS AND SWITCHES TO BE GROUNDED TO BOX
- 16 120V 15A IVORY DUPLEX GROUNDING TYPE
- 2 120V 15A IVORY DUPLEX GFCI PROTECTED
- 2 120V 15A IVORY DUPLEX GFCI PROTECTED
- 2 120V 20 AMP IVORY TOGGLE TYPE (1 W/RED COVER FOR WH DISCONNECT)
- 4 2X4 EMPTY J-BOXES W/ COVER AND 1/2" CONDUIT STUBBED THRU CEILING FOR (SYSTEMS TO BE INSTALLED ON SITE BY OTHERS)

PHONE/DATA

- 1 2X4 STUD GRADE SPF EQUAL OR BETTER @ 16" O.C. W/ EXTRA DADO
- 1 DOUBLE 2X6 #3 SPF EQUAL OR BETTER
- 1 9'-0" VCG (CLASS A/1 F.S.)
- 1 R-19 KRAFT FIBERGLASS BATT
- 1 HOUSEWRAP UNDER SIDING
- 1 296GA RIBBED STEEL
- 1 SIDING = TO BE DETERMINED
- 1 SKIRTING SUPPLIED AND INSTALLED ON SITE BY OTHERS
- 1 ANSI CONSTRUCTION

EXTERIOR WALLS

- 1 2X4 STUD GRADE SPF EQUAL OR BETTER @ 16" O.C. (TRANSVERSE)
- 1 DOUBLE 2X6 #3 SPF EQUAL OR BETTER
- 1 9'-0" VCG (CLASS A/1 F.S.)
- 1 R-19 KRAFT FIBERGLASS BATT
- 1 HOUSEWRAP UNDER SIDING
- 1 296GA RIBBED STEEL
- 1 SIDING = TO BE DETERMINED
- 1 SKIRTING SUPPLIED AND INSTALLED ON SITE BY OTHERS
- 1 ANSI CONSTRUCTION

INTERIOR WALLS

- 1 2X4 STUD GRADE SPF EQUAL OR BETTER @ 16" O.C.
- 1 DOUBLE 2X4 #3 SPF EQUAL OR BETTER
- 1 9'-0" VCG (CLASS A/1 F.S.)
- 1 UNFACED FIBERGLASS
- 1 SUPPLY DELUXE WOOD PROFILES
- 1 WHITE DELUXE WOOD PROFILES @ WINDOWS AND DOORS
- 1 VINYL BATTENS AT TOP, VERTICAL SEAMS, INSIDE AND OUTSIDE CORNERS
- 1 SHIP LOOSE BATTENS FOR WALL AND CEILING MATE LINES
- 1 4" VINYL COVE BASE (6" IN RESTROOM) (COLOR = TO BE DETERMINED)

ROOF

- 2X8 #2 SPF RAFTERS @ 16" O.C. W/ 50# LIVELOAD
- 1 W/SLEEPERS @ 24" O.C. TO FORM SLOPE
- 1 1-LAYERS OF 1/2" X11 1/4" 2-0E LVL
- 1 PROJECTION FULL PERIMETER
- 1 1/2" GYPSUM BOARD, W/SPRAYED ON VAPOR BARRIER
- 1 2X4 SUSPENDED CEILING (CLASS A/1 F.S.)
- 1 USC #2310 RADAR
- 1 USC #3270 W/ MOISTURE RESISTANCE IN RESTROOM
- 1 7'-10" FINISHED CEILING HEIGHT
- 1 80# TO 50# OF THE SUSPENDED CEILING MAY NEED TO BE FINISHED AT SITE
- 1 R-22 INSULATION
- 1 7/16" OSB 16/0 SPAN INDEX
- 1 .045 BLACK EPDM RUBBER ROOF FULLY ADHERED
- 1 12'X65' (BLACK) EPDM SPLICE (SHIPPED LOOSE)
- 1 NON-RED SCREENED GAB (BLACK) TO ACTIVATE @ 80# RELATIVE HUMIDITY
- 1 K-60 J-RAIL (VENT COLOR = TO BE DETERMINED)
- 1 GALVANIZED BOXES FOR GABLE VENTS (WRAP W/ DUCT BOARD)

INSULATION

- 1 SHEATHING: .045 BLACK EPDM RUBBER ROOF FULLY ADHERED
- 1 ROOFING: 12'X65' (BLACK) EPDM SPLICE (SHIPPED LOOSE)
- 1 ROOF VENTING: NON-RED SCREENED GAB (BLACK) TO ACTIVATE @ 80# RELATIVE HUMIDITY
- 1 GUTTERS: K-60 J-RAIL (VENT COLOR = TO BE DETERMINED)

CEILING

- 1 2X4 STUD GRADE SPF EQUAL OR BETTER @ 16" O.C.
- 1 DOUBLE 2X4 #3 SPF EQUAL OR BETTER
- 1 9'-0" VCG (CLASS A/1 F.S.)
- 1 UNFACED FIBERGLASS
- 1 SUPPLY DELUXE WOOD PROFILES
- 1 WHITE DELUXE WOOD PROFILES @ WINDOWS AND DOORS
- 1 VINYL BATTENS AT TOP, VERTICAL SEAMS, INSIDE AND OUTSIDE CORNERS
- 1 SHIP LOOSE BATTENS FOR WALL AND CEILING MATE LINES
- 1 4" VINYL COVE BASE (6" IN RESTROOM) (COLOR = TO BE DETERMINED)

FINISHED HT

- 1 7'-10" FINISHED CEILING HEIGHT
- 1 80# TO 50# OF THE SUSPENDED CEILING MAY NEED TO BE FINISHED AT SITE
- 1 R-22 INSULATION
- 1 7/16" OSB 16/0 SPAN INDEX
- 1 .045 BLACK EPDM RUBBER ROOF FULLY ADHERED
- 1 12'X65' (BLACK) EPDM SPLICE (SHIPPED LOOSE)
- 1 ROOF VENTING: NON-RED SCREENED GAB (BLACK) TO ACTIVATE @ 80# RELATIVE HUMIDITY
- 1 K-60 J-RAIL (VENT COLOR = TO BE DETERMINED)
- 1 GALVANIZED BOXES FOR GABLE VENTS (WRAP W/ DUCT BOARD)

APPROVED AS IS SIGNATURE _____ DATE _____
 APPROVED AS NOTED SIGNATURE _____ DATE _____
 REVISE AND RESUBMIT SIGNATURE _____ DATE _____

TRANSPORTATION IS THE RESPONSIBILITY OF THE DEALER AND OR OTHERS. CUSTOMER IS RESPONSIBLE FOR DAMAGES TO BUILDING CAUSED BY SHIPPING COMPANY BECAUSE OF WIDTH AND OR HEIGHT OF UNIT

See Building Cross Section

Drawing Index

Page	Page Description
C1	Project Specification Sheet
A1	Production Electrical Plan
A2	Production Mechanical Plan
E1	Production Mechanical Plan
S2	Cross Section / Details
S3-S5	Production Frame, Floor and Roof Framing Plans
P1	DWV and Fresh Water Plumbing Schematics

Scale: N/A
 Drawing Number: 1939
 Revision Number: 1939
 Date: 7/20/2012
 Issued By: J. B. B. B.
 Checked By: J. B. B. B.
 Approved By: J. B. B. B.
 Title: Armstrong Trailers 2440 Office / 23'-7" x 36'-0"

2224 Bloomingsdale Drive
 Bristol, Indiana 46507
 Phone: (574) 848-1800
 Fax: (574) 848-1800
 C & B MODULAR, INC.

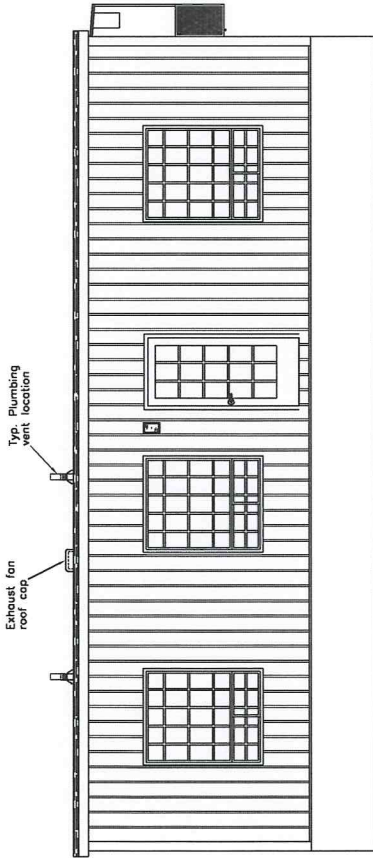
Page # 1 of 1
 Drawing Title: Armstrong Trailers 2440 Office / 23'-7" x 36'-0"

Scale: N/A
 Drawing Number: 1939
 Revision Number: 1939
 Date: 7/20/2012
 Issued By: J. B. B. B.
 Checked By: J. B. B. B.
 Approved By: J. B. B. B.
 Title: Armstrong Trailers 2440 Office / 23'-7" x 36'-0"

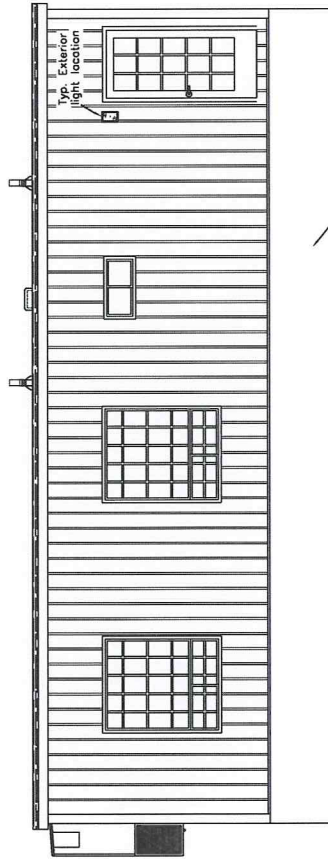
2224 Bloomingsdale Drive
 Bristol, Indiana 46507
 Phone: (574) 848-1800
 Fax: (574) 848-1800
 C & B MODULAR, INC.

Page # 1 of 1
 Drawing Title: Armstrong Trailers 2440 Office / 23'-7" x 36'-0"

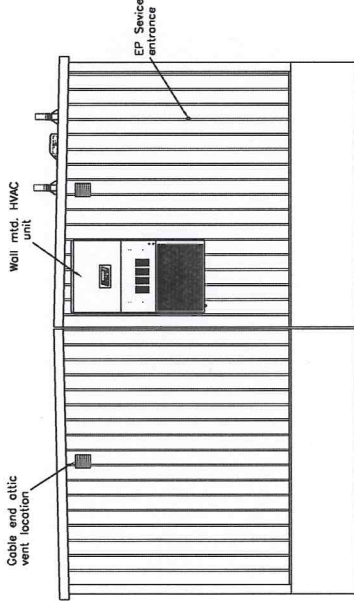
Scale: N/A
 Drawing Number: 1939
 Revision Number: 1939
 Date: 7/20/2012
 Issued By: J. B. B. B.
 Checked By: J. B. B. B.
 Approved By: J. B. B. B.
 Title: Armstrong Trailers 2440 Office / 23'-7" x 36'-0"



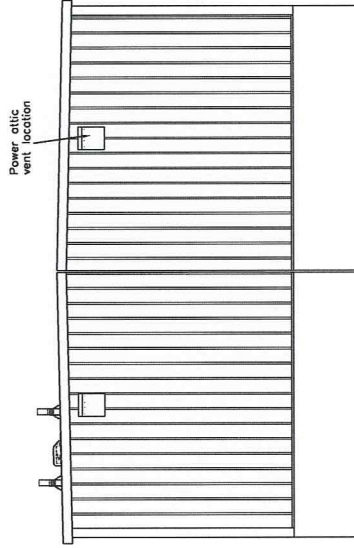
Elevation A



Elevation C



Elevation B



Elevation D

APPROVED AS IS SIGNATURE _____ DATE _____
 APPROVED AS NOTED SIGNATURE _____ DATE _____
 REVISE AND RESUBMIT SIGNATURE _____ DATE _____

TRANSPORTATION IS THE RESPONSIBILITY OF THE DEALER AND OR OWNER. CAB SHALL NOT BE RESPONSIBLE FOR ANY DAMAGE TO UNITS CAUSED BY SHIPPING COMPANY BECAUSE OF WIDTH AND OR HEIGHT OF UNIT

See Building Cross Section
Building Height

Scale:	Drawn:	Date:	Proj. No.:
Noted:	AB	7/20/2012	Jul 25, 2012
Project:	1999	12-17695-90.dwg	12-17695-90.dwg
Approval Number:	QPS - Electric		
File:	2224, Bloomingdale, Drive		
Client:	Armstrong Trailers, Inc.		
Address:	2440 Office / 25'-7" x 36'-0"		
City:	Bloomington, IL		
State:	IL		
Country:	USA		
Modular, Inc.	Page # A1		

